

Pie Face!

AGES
5+



ADULT ASSEMBLY
REQUIRED.

E2762

**WHIPPED
CREAM
NOT INCLUDED.
ADDITIONAL
PURCHASE
REQUIRED.**

CONTENTS
1 pie thrower, 1 throwing
arm, 2 handles, 1 chin rest,
1 double-sided
splash-card mask,
1 spinner, and 1 connector

⚠️ WARNING:

CHOKING HAZARD—Small parts.
Not for children under 3 years.

⚠️ CAUTION:

TO AVOID INJURY:
Do not substitute other materials or objects
to play this game. Use only whipped cream
(not included). Thoroughly wipe the product
clean before and after each use, taking
care to remove all whipped cream. If
whipped cream comes in contact with eyes
rinse immediately with water.

ADULT SUPERVISION REQUIRED.



OBJECT

Score points by completing a turn
without getting “pie-faced”!

THE FIRST TIME YOU PLAY

Assemble the spinner by putting the plastic arrow through
the spinner card and snapping it into the base.



HASBROGAMING.COM

PIE FACE, ROCKET GAMES, and logo are trademarks of Rocket Games.
© 2014 Rocket Games.

® and/or TM® & © 2017 Hasbro, Pawtucket, RI 02861-1059 USA.
All Rights Reserved. TM & © denote U.S. Trademarks.

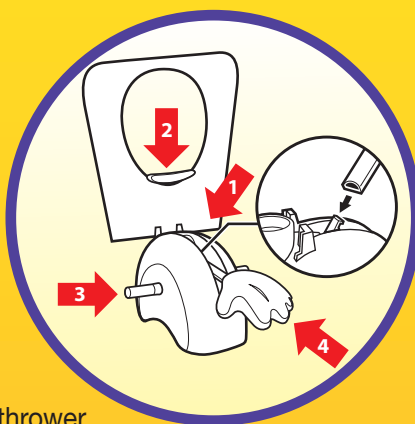
Consumer contact:
USA and Canada: Hasbro Games, Consumer Affairs Dept.,
P.O. Box 200, Pawtucket, RI 02861-1059 USA.
TEL. 800-255-5516.

Hasbro Australia Ltd., Level 4, 67-71 Epping Rd, Macquarie
Park, NSW 2113, Australia. TEL. 1300 138 697.

Hasbro NZ (a branch of Hasbro Australia Ltd.),
221 Albany Highway, Auckland, New Zealand.
TEL. 0508 828 200.

SET UP

1. Insert the mask between the chin rest slot and front clips on the pie thrower.
2. Attach the chin rest to the thrower, further securing the mask in place. Be careful not to bend the mask.
3. Gently push a handle into each side of the thrower.
4. Attach the throwing arm to the thrower and press it down until it locks into place.
5. Place the game on a suitable playing surface and put some whipped cream from home directly on the hand!
6. Grab a pen and paper to keep score.



3. Turn the handles **forward** the required number of clicks.
4. If you get hit, you've been "pie-faced" and score no points. If you don't get hit, you score double the points you spun!

Partial turn

You can choose to turn the handles fewer times than you've spun. Announce how many times you'll turn them instead. If you don't get "pie-faced," you score a point for each time you turned the handles. (E.g., if you decide to turn the handles twice and don't get "pie-faced," you score two points.)

WIN

The first player to reach 25 points wins!

PLAY

The youngest player goes first. Play continues clockwise.

On your turn

1. Spin the spinner to find out how many times you have to turn the handles.
2. Put your chin on the rest and look through the mask, facing the hand.

PUTTING THE GAME AWAY

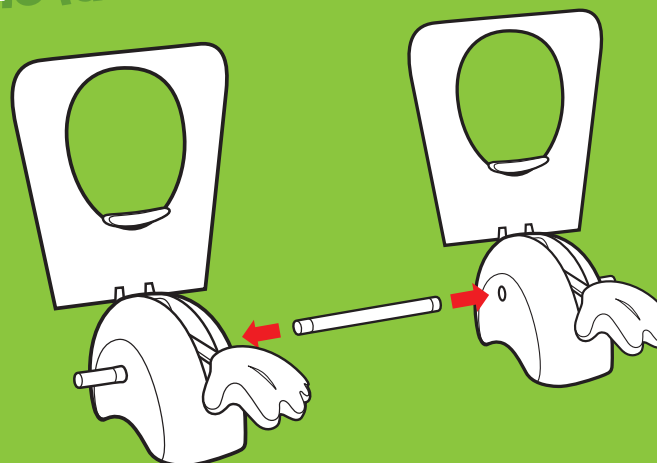
1. Carefully remove the throwing arm, chin rest, mask, and handles from the pie thrower.
2. Thoroughly clean all components with water.
3. Make sure all components are clean and dry before putting them back in the box.

CHAIN REACTION MODE*

Load all of the hands with whipped cream from home and have everyone look through a mask. Together, everyone counts down "3, 2, 1" and turns the handles **forward** once. If you get "pie-faced," you're out! Keep turning the handles together, one click at a time. The last player standing wins!

*Chain reaction mode requires two or more PIE FACE games, which are sold separately and subject to availability.

Play together by connecting multiple games.
The last one standing WINS!



Assemble each game as described in SET UP above, but instead of using both short handles, attach a connector between pie throwers.