

Specialized Transportation – What's a log got to do with it?



Special Education Solutions

This information is provided for educational purposes only to facilitate a general understanding of the law or other regulatory matter. This information is neither an exhaustive treatment on the subject nor is this intended to substitute for the advice of an attorney or other professional advisor. Consult with your attorney or professional advisor to apply these principles to specific fact situations.

Things we will cover

- Definition
- IEP Documentation
- Specialized Transportation Log Components
- Do's and Don'ts
- Q & A



What is Specialized Transportation?

A billable SHARS service when combined with another billable SHARS service provided to the student on the same day.

**I still don't
get it**

LET'S BREAK DOWN THE
BILLABLE COMPONENTS

HUWA

Keyword: Adaptation



Possible Adaptations

Wheelchair lift

Child Protective Seating

Seatbelts or Harness restraint

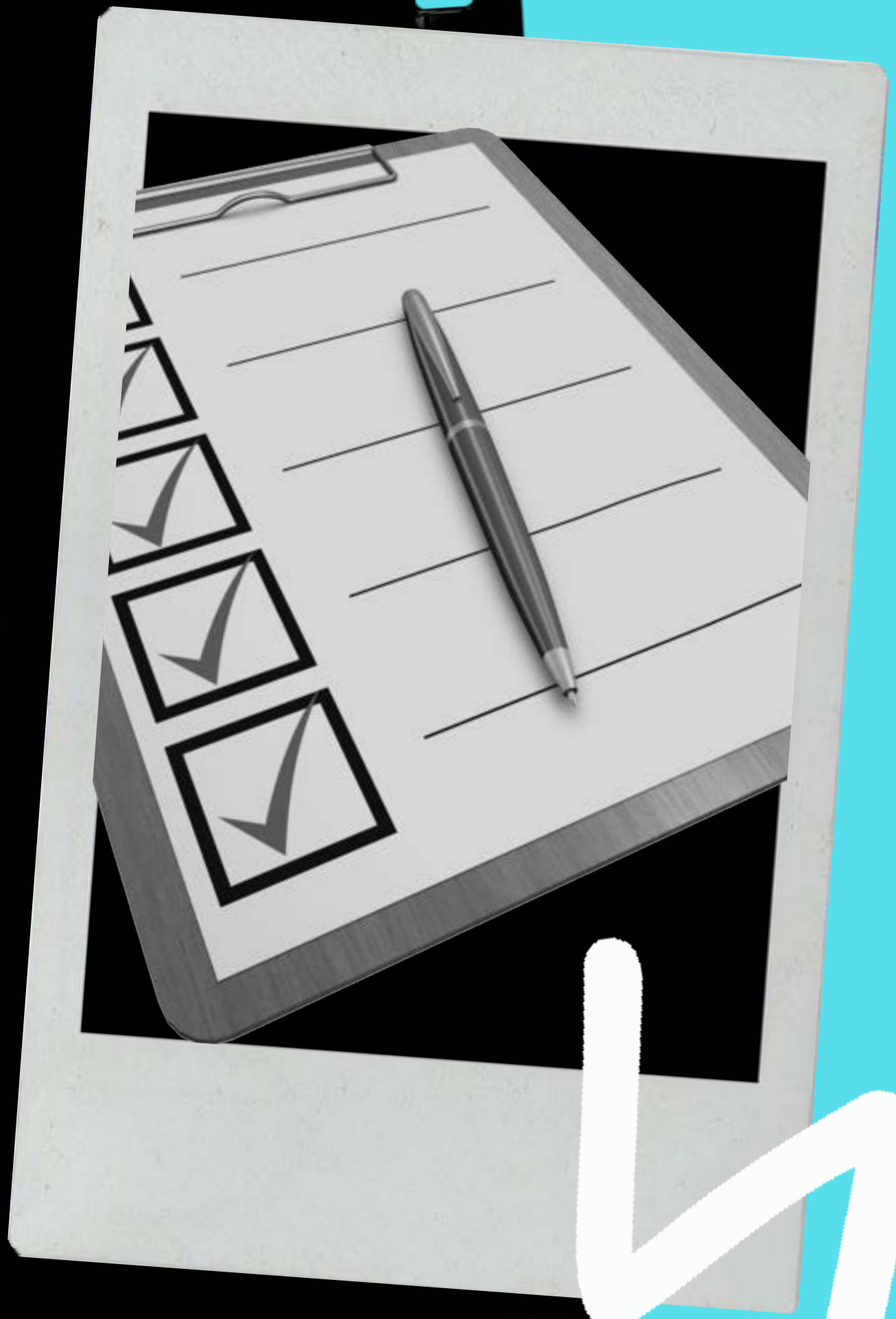
Air conditioning



The real question is...

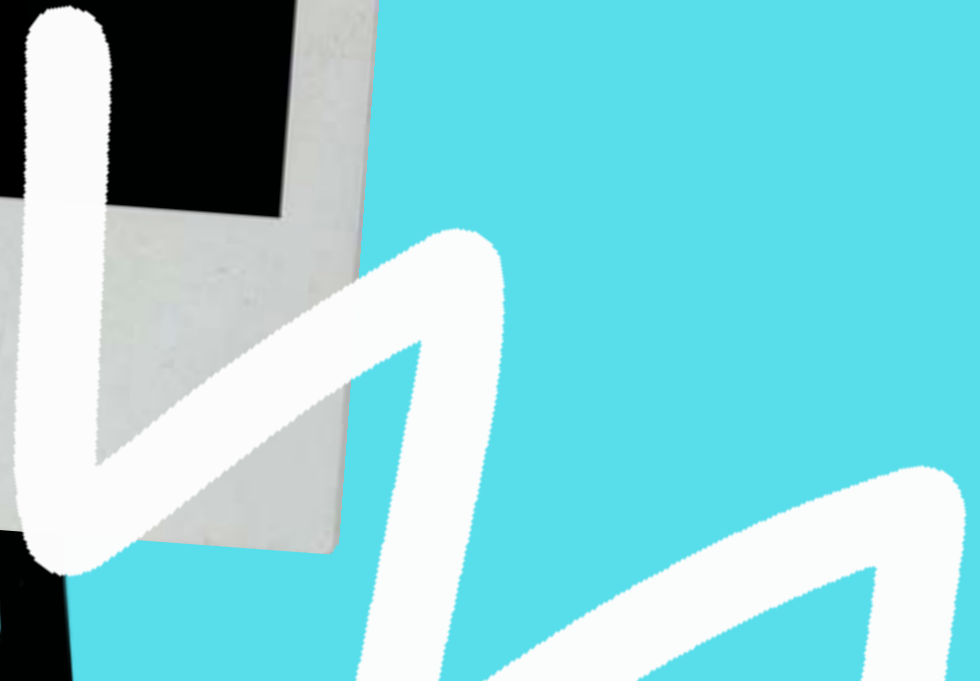
**Is this
adaptation for all
or just some?**





But wait! There's more

IEP Documentation





COMPLIANT DOCUMENTATION

"Don needs specialized transportation with the adaptation of a harness restraint in order to safely ride the bus daily to and from school. Without the harness Don will run in the bus aisle."

TRADITIONAL DOCUMENTATION

"Tien needs special transportation to and from school on a daily basis"



WHERE DOES THIS INFO GO?



**SHARS Operating
Procedures**



**Transportation
Supplement**




**Schedule of
Services**



**Is your transportation
log compliant?**

**Elements of a
compliant log**





LEA Name

Student Full Name and Medicaid #

Bus Route Name or Number

Place to indicate am/pm trips and initials

Driver & Service Provider's Name, Signature and Date

PCS provided and absence notation
when applicable

Dates of service and day of the week

Trip Logs must be maintained
daily



Do's and Don'ts

Train your drivers and monitors

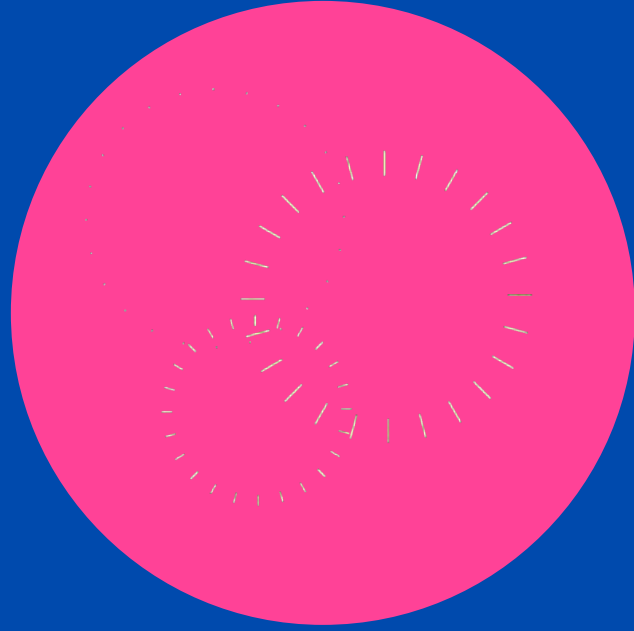
Don't use checkmarks on the log

Only bill for specialized transportation when a corresponding service is provided the same day to the student



Wrap Up

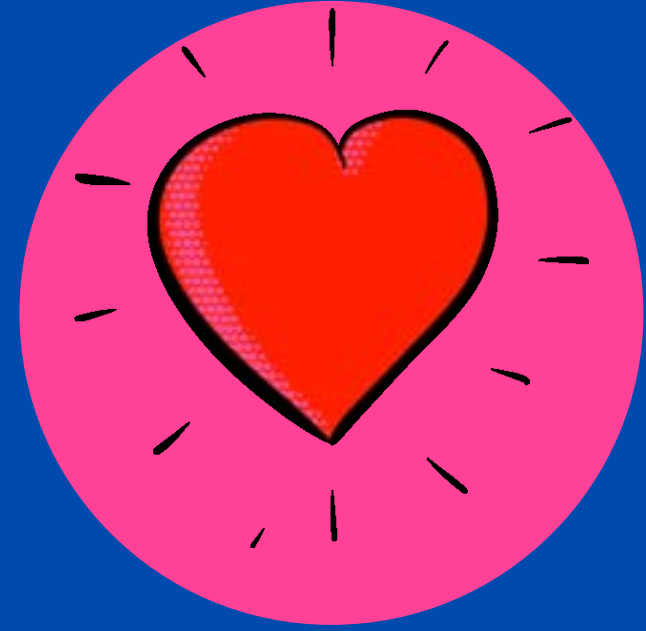
QUESTIONS



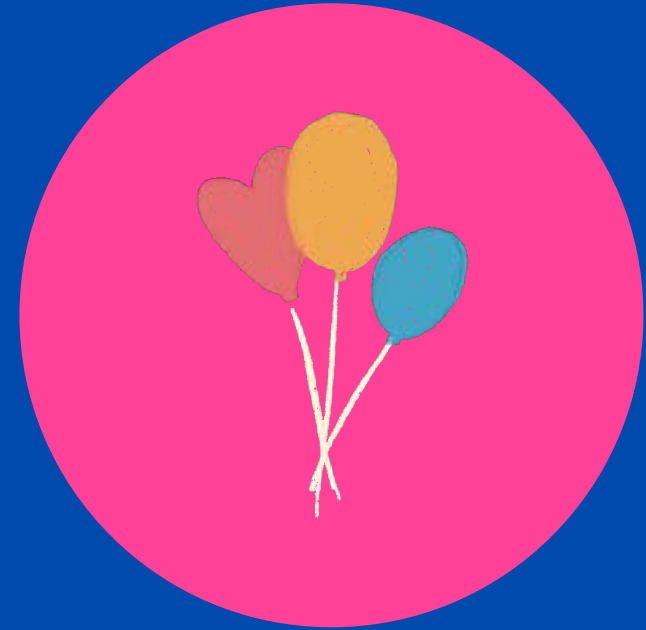
Ah-ha!



Comments



Likes



Take-Aways

TASB Special Education Solutions

A DEDICATED TEAM OF EXPERTS

Take our survey:

<https://tinyurl.com/y2dhmph5>



SCAN ME

Physical Address

12007 Research Blvd,
Austin, TX 78759

Phone Number

888-630-6606

Email

shars@tasb.org

The information in this presentation may include the intellectual property of third parties.

Contact Us

LET'S WORK TOGETHER.

