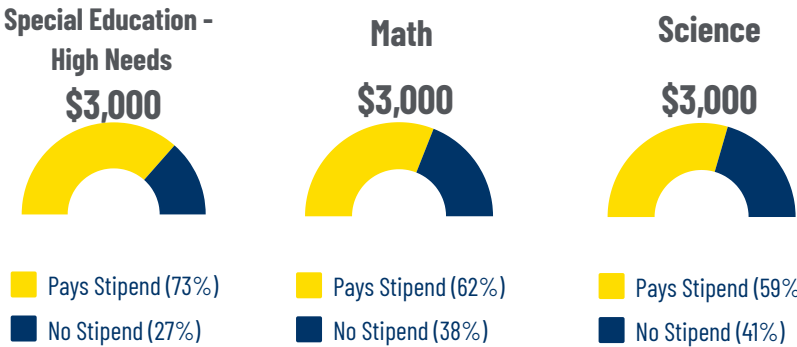


# Teacher Highlights 2025-2026

## TASB District Personnel Survey

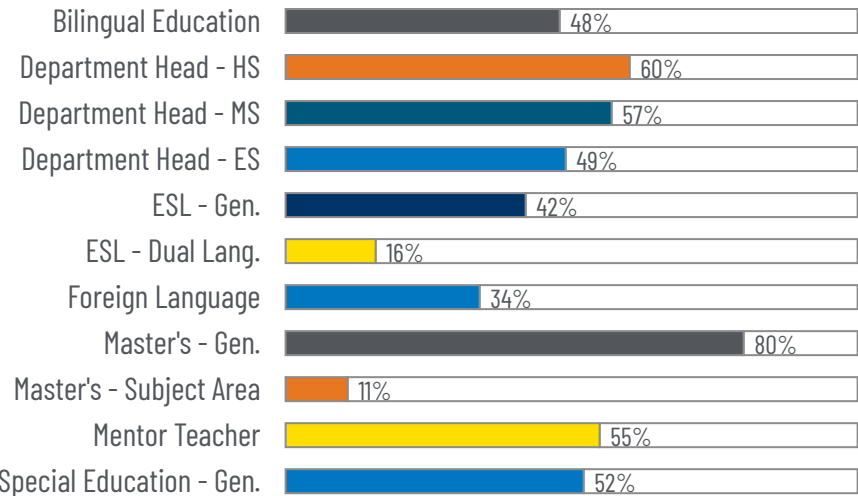
All 1,018 Texas public school districts received the District Personnel Salary Survey questionnaire. Of those, 561 districts participated, representing 55 percent of districts in Texas. For districts with 3,000 or more students, participation was 83 percent.

### Common Median Stipend Amounts

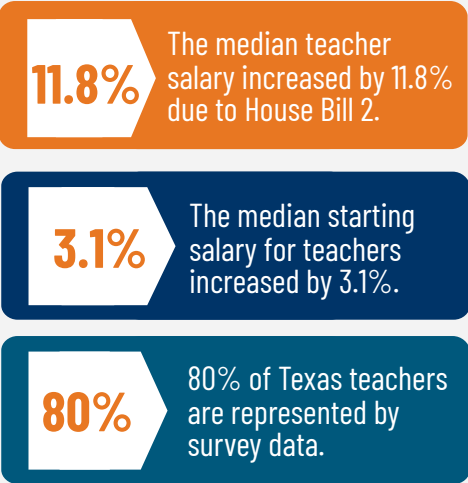


The high needs special education stipend is the most common stipend reported with 73% of responding districts reporting it, and a median value of \$3,000 (an increase from \$2,500 for multiple years). Mathematics and science stipends are tied for the second most frequently reported shortage stipend, with 58% of responding districts paying a median amount of \$3,000.

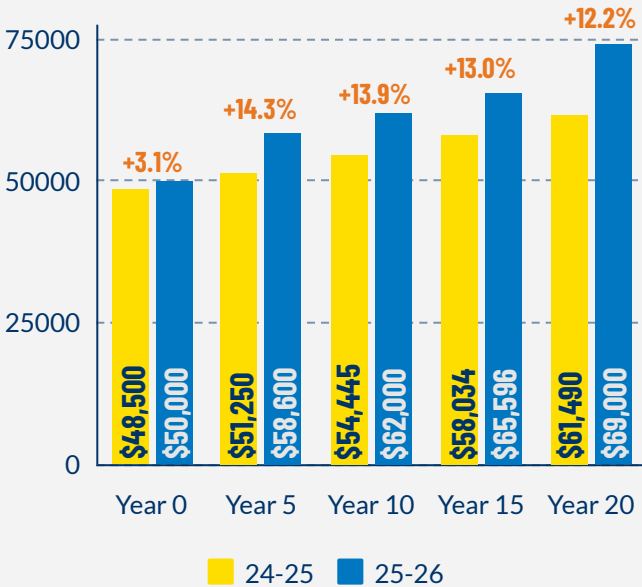
### Other Reported Stipends by Districts



### Survey Stats at a Glance



### Changes to Teacher Hiring Schedule



The median teacher average salary in responding districts is \$62,935 for 2025-2026, up 11.8 percent from 2024-2025.

### Median Hiring Schedule vs State Minimum

