



We're for the visionaries.®







We're for...

People who take building to new levels.

Quality craftsmanship.

Expertise.

Possibilities.

Innovation.

We're for the visionaries.®



We're for people who take building to new levels.

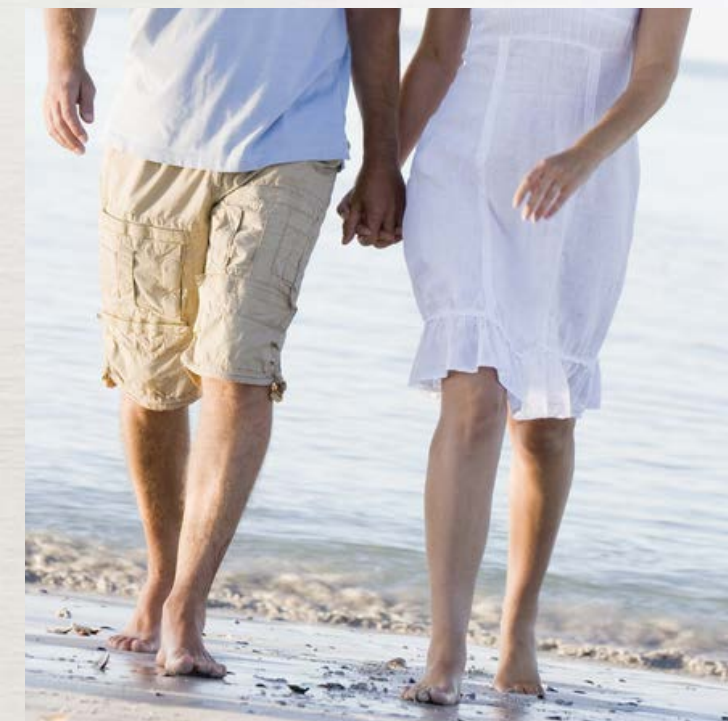
We're for people who are passionate about design, who care about the big picture and the smallest detail. We're for people who aren't satisfied with mainstream options. They push the limits of what's possible with the styles, options, and custom solutions that can only be found in Kolbe windows and doors. We're for people who expand the limits of living spaces by uniting them with expansive windows and doors, allowing the outdoors to become an integral part of their home.





This upscale coastal resort turned to Kolbe to help restore the romance and historical elegance of its post-Civil War era architectural style. More than 500 Kolbe windows and over 100 doors with invisible structural reinforcements help provide hurricane-force protection while framing beautiful ocean views for all guests.







My vision was to create view corridors that interact with the landscape.

Rustic, modern, and wild at its core, this home accentuates the beauty of Big Sky country. Inspired by the varied elevations of the rugged terrain, the natural material palette reflects the region while remaining warm and inviting. VistaLuxe® Collection windows and a TerraSpan® lift & slide door provide a spectacular front-row view of the landscape and passing wildlife.

Jamie Dugaard, AIA, NCARB, LEED AP
Centre Sky Architecture, Ltd. | Big Sky, MT





Photos © Whitney Kamman Photography





We're for quality craftsmanship.

We're for people who pay attention to details. We're for a tradition of excellence that outlasts the latest design fad. With handcrafted touches, our windows and doors are made-to-order and become exceptional statement pieces in your design.

The Kolbe story began with a family and a vision. More than 70 years after the Kolbe brothers began their commitment to producing premium-quality windows and doors, products bearing their family name can be found in some of North America's most impressive buildings.

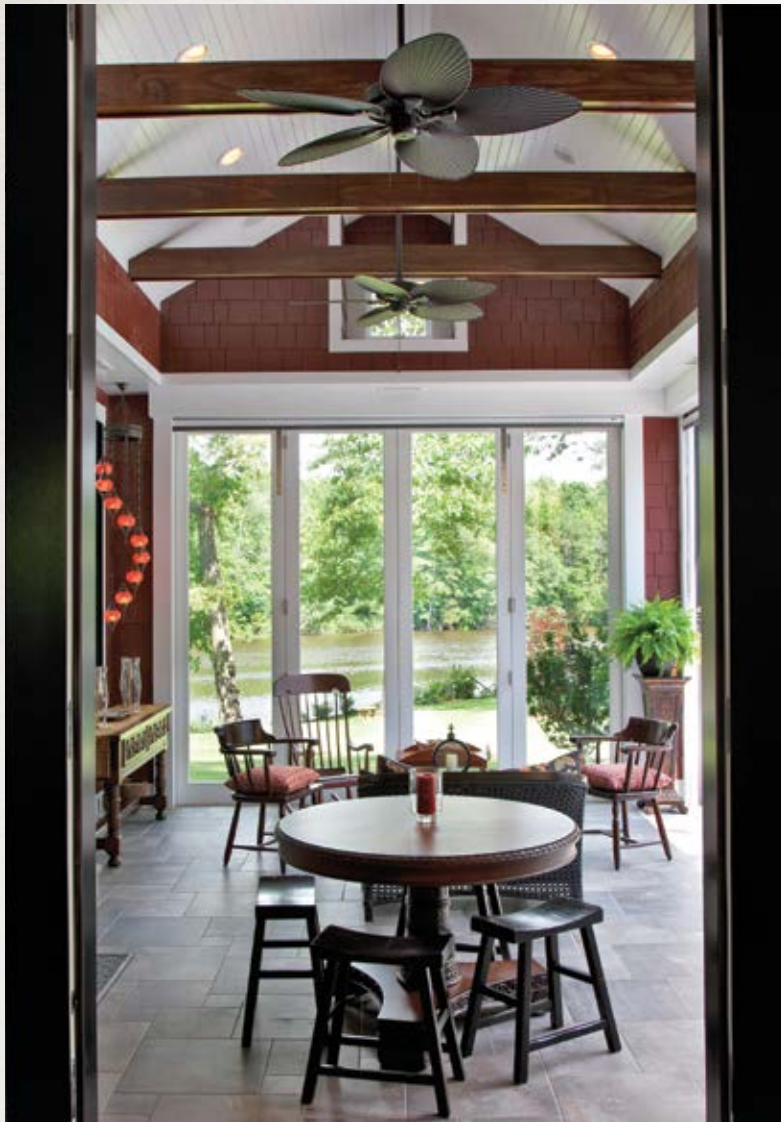


This beautiful Gothic-style chapel features towering Heritage Series triple hungs and double hungs. Each window was custom built by our craftspeople in a specific size and shape, with attention to the smallest details. We carefully designed and crafted these windows to help bring this picturesque project to life.









My vision was to integrate the natural beauty of this home's waterfront locale.

The windows and doors played a major role in the aesthetics of this home. Kolbe's products, especially the walls of windows in the living room and folding doors in the lanai, help unite the interior spaces with the exterior. Because of Kolbe's windows and doors, the owners are able to continuously enjoy the picturesque location of their property.



Christopher L. Pattey, Associate AIA
Senior Associate with Becker Morgan Group | Salisbury, MD

We're for expertise.

We're for people who dream of a personalized design experience. You can only purchase our products from a Kolbe dealer, because Kolbe dealers have a high level of expertise and are as passionate about windows and doors as you are about bringing your vision to life.

Leave the technical details in the hands of one of our window specialists, who are uniquely equipped to help you create windows and doors that perfectly fit your project. We approach each project individually, striving to offer solutions for an elaborate or technically complex design. We'll work with you to make your dream a concrete reality.







Inspired by the work of Frank Lloyd Wright and the intriguing topology of the site, this modern prairie style home features cantilevered roofs and a true integration of interior and exterior. The complex design demanded flexibility and intricate detailing to meet the architectural requirements of the structure. Kolbe's versatile products and custom capabilities are seen in the Ultra Series corner windows, Heritage Series door systems, and numerous divided lites.



Photos © Marco Zecchin/Image Center



My vision was to create a modern, organic home that harmonizes with the landscape.

Enveloped by nature, this dynamic home in Rumson, New Jersey, connects to the landscape with its layered floor plan and floor-to-ceiling windows and doors. Kolbe's VistaLuxe® Collection provides clean lines and large expanses of glass for uninterrupted views.



Stuart Narofsky, FAIA
Narofsky Architecture | Long Island, NY







We're for possibilities.

We're for people who don't want to compromise their vision to fit anyone else's idea of "standard". We're for handmade touches and virtually limitless options. We're for restorative design that brings the beauty of a historical building back to life.

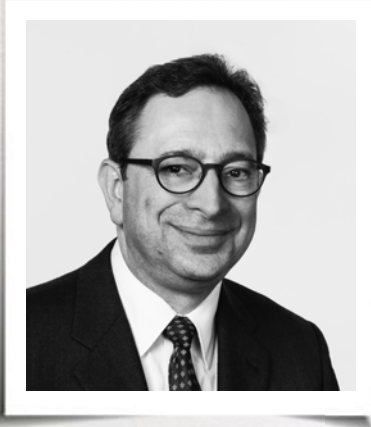
At Kolbe, each product is truly built to order. Our team members are craftspeople who focus on building one window or door at a time, so they can create custom-built products to fulfill your vision – whether new construction or historical renovation. If you can dream it, we can build it.





Kolbe's Ultra Series Majesta® double hungs, transoms, and exterior doors played a significant role in the renovation of DePauw University's Hoover Hall. In addition to matching the authentic Georgian style details of the historic buildings on campus, they were key to meeting the new building's sustainability goals and LEED® Gold Criteria. These same historically appropriate products also updated the appearance and performance of the Memorial Student Union.





My vision was to enhance a home's historical beauty with updated living spaces.

Kolbe's capacity to provide multiple types and styles of windows allowed us to transform the antiquated spaces of this historical home into light-filled rooms that are the focus of family life.

Spence Kass, AIA
Kass & Associates | Philadelphia, PA





Photos courtesy of Kass & Associates





We're for innovation.

We're for people who want to take building to new levels of performance, with advancements in not only extraordinary sizes and shapes, but also energy efficiency and universal design. We're for creative thinking that redefines what's possible.

We were the first in the industry to develop a product line specifically designed and detailed for the contemporary aesthetic: the VistaLuxe® Collection. With their narrow frames and minimal sightlines, these award-winning windows and doors allow you to create an opening as unique as your project. Only Kolbe builds windows and doors that do the things you dream about – our most impressive windows and doors provide expansive views while meeting local energy codes.





This custom Florida home uses high performance Kolbe windows and doors that meet the stringent building codes of the region. Through our innovative design, impact performance is delivered without compromising architectural aesthetics – these units are constructed without additional clips or unsightly brackets, allowing the beauty of this home to radiate, no matter the weather.

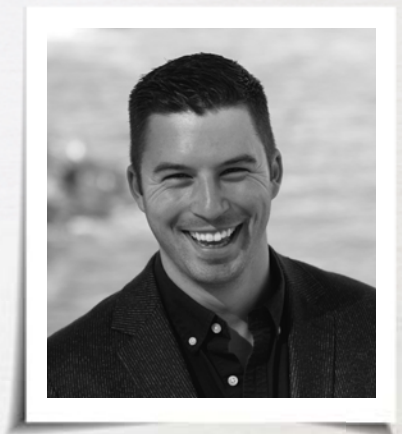




**My vision was to renovate the home
to embrace the surrounding views.**

Taking advantage of California's climate, capturing San Diego's skyline and providing an ideal setting for casual entertaining, this home renovation reflects a modern, coastal style inspired by the views available from its expansive windows and sliding patio doors.

Andy Fotsch, Principal Designer
Will & Fotsch Architects, Inc. | La Jolla, CA







We're for the visionaries.®



KOLBE

WINDOWS & DOORS
We're for the visionaries.®

1323 S. 11th Avenue | Wausau, WI 54401-5998
715.842.5666

www.kolbewindows.com

© 2019 Kolbe & Kolbe Millwork Co., Inc. Kolbe & Kolbe Millwork Co., Inc. reserves the right to change specifications without notice. The photography featured herein does not necessarily imply an endorsement of Kolbe products by the property owners. Photography used may not represent current Kolbe product features and options.
Front cover photo © Ema Peter Photography. Back cover photo © Roger Wade.