



# SATAjet<sup>®</sup> X 5500 B HVLP 1.3I



## BASECOAT

### FAN SETTINGS

- 3/4 to full out from closed for application coats
- Technique coat - open full

### APPLICATION

- 1st coat: double medium wet
- 2nd coat: double medium wet
- Technique coat must be applied at 1 turn out from closed over a dry base at increased distance from panel

### FLUID SETTINGS

- Standard Conditions  
→ 2 turns out from closed
- High Humidity >60%  
→ 1.5 turns out from closed

### APPLICATION NOTES

- Spray to texture, not wetness
- 2nd double coat should be lighter/dryer than 1st double coat

### PRESSURE SETTINGS

- Large Areas  
1.5 bar
- Small Areas  
1.3 bar
- Technique Coat  
1.1 bar







# SATAjet® X 5500 B RP 1.2I - 1.3I



## MAXIGLAZE CLEARCOAT

### FAN SETTINGS

→ Open full from closed

### FLUID SETTINGS

→ 2 turns out from closed

### PRESSURE SETTINGS

All Areas  
2.0 - 3.0 bar

### APPLICATION

Single Visit Mode (Refer to PDS)

- Apply one light set-up coat
- Follow immediately by one full wet coat
- Bake immediately

### APPLICATION

Two Coat Mode (Refer to PDS)

- Apply one medium coat
- Flash off max 5 min
- Follow with one full wet coat
- Bake immediately







# SATAjet® X 5500 B RP/HVLP 1.3I



MATT 0720 / 0760 SEMI GLOSS

## FAN SETTINGS

→ Open full from closed

## FLUID SETTINGS

→ 2 turns out from closed position

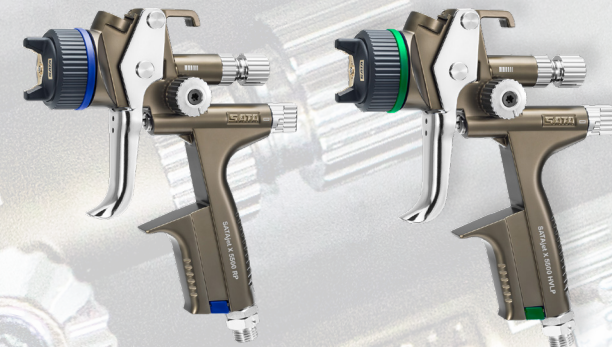
## PRESSURE SETTINGS

All Areas  
1.8 - 2.2 bar

## APPLICATION

### Two Coat Mode

- Apply one medium wet coat
- Flash until matt/semi gloss
- Apply one full wet coat, pull back immediately and apply light coat into wet film to ensure uniformity
- Flash until matt/semi gloss
- Bake as per PDS







# SATAjet<sup>®</sup> X 5500 B RP/HVLP 1.3I



**BASECOAT**

## FAN SETTINGS

- Open full from closed
- Technique coat - open full

## FLUID SETTINGS

- 2 turns out from closed

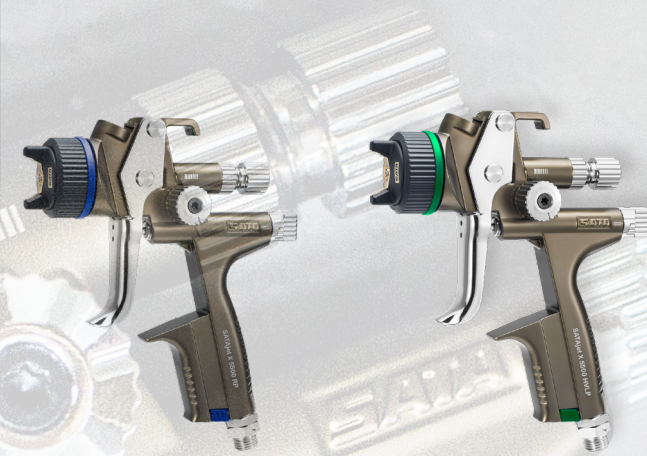
## PRESSURE SETTINGS

Large Areas  
1.6 - 1.8 bar

Technique Coat  
1.2 bar if required

## APPLICATION

- Coverage coats, single wet coats
- Technique coat must be applied into semi-wet base at reduced pressure and increased distance from panel







# SATAjet<sup>®</sup> X 5500 B RP/HVLP 1.3I



## CLEARCOATS

### FAN SETTINGS

→ Open full from closed

### FLUID SETTINGS

→ 2 turns out from closed

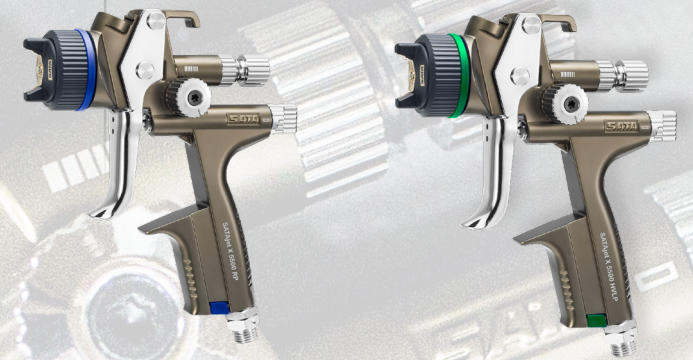
### PRESSURE SETTINGS

All Areas  
1.8 - 2.2 bar

### APPLICATION

MS/HS Clear - 1.3I HVLP

See specific product PDS



German Engineering







# SATAjet<sup>®</sup> X 5500 B RP 1.3I



## DIRECT GLOSS

### FAN SETTINGS

→ Open full from closed

### FLUID SETTINGS

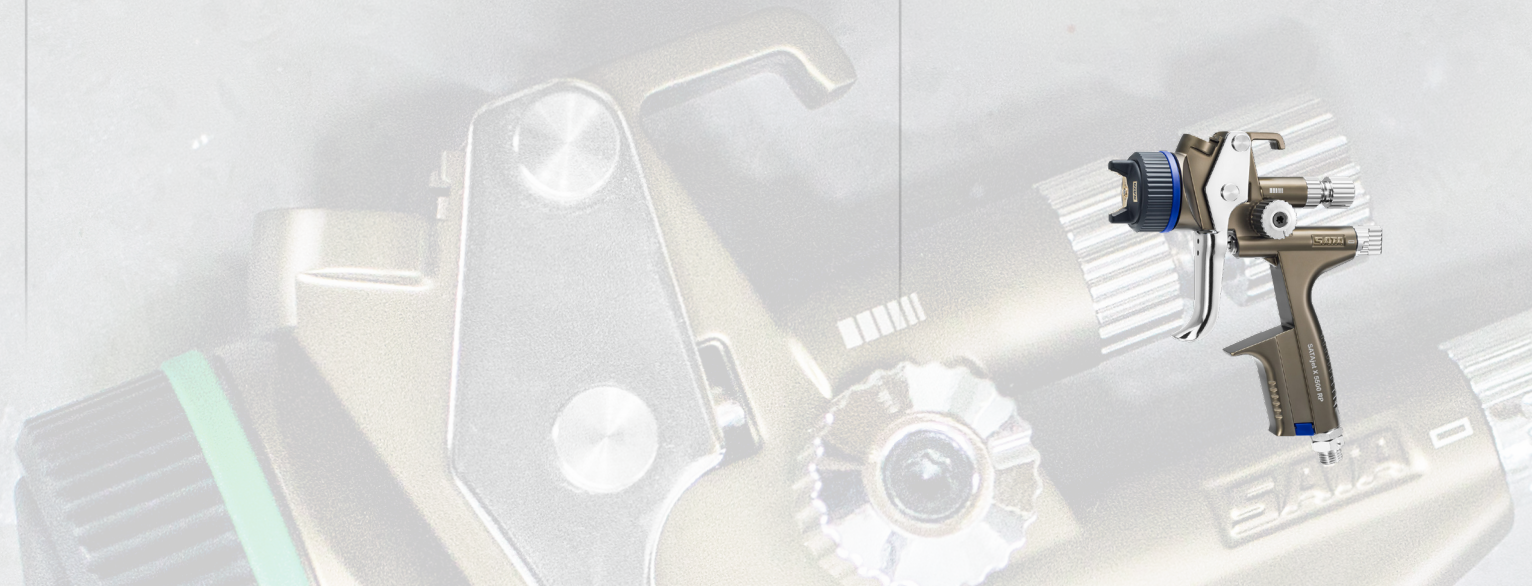
→ 2 turns out from closed position

### PRESSURE SETTINGS

All Areas  
1.8 - 2.2 bar

### APPLICATION

- Apply one medium wet coat
- Flash 3 - 5 mins
- Apply one full wet coat
- Bake immediately



German Engineering

