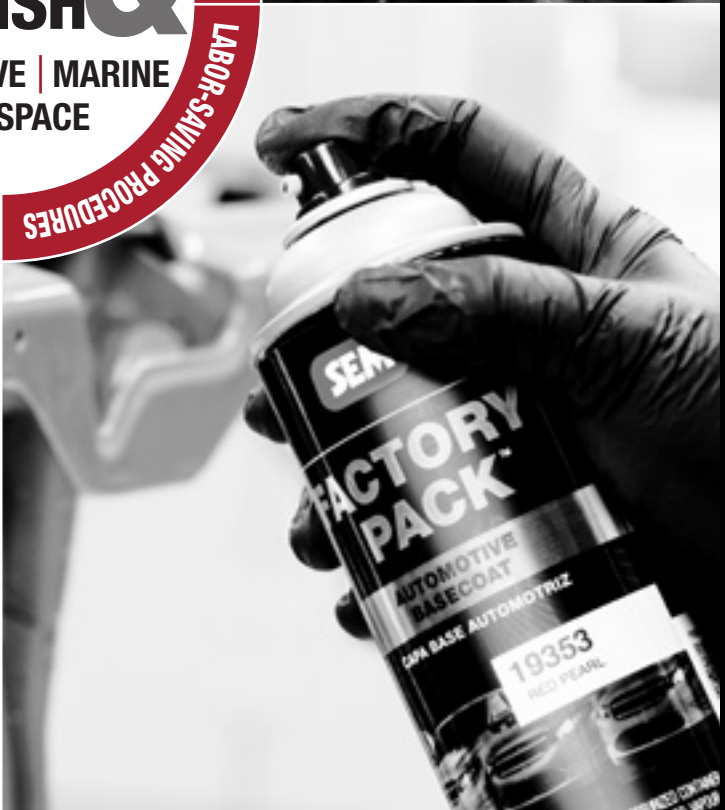




PRODUCT GUIDE



INNOVATIVE PRODUCTS

COMPREHENSIVE TRAINING

LABOR-SAVING PROCEDURES

ON-DEMAND RESOURCES

# REPAIR & REFINISH

AUTOMOTIVE | MARINE  
AEROSPACE



OEM TESTED. OEM TRUSTED.  
**OEM RECOMMENDED.**



**SEM has you covered with the OEM recommended products you need to do the job right.**

ADHESIVES | FOAMS | PANEL BONDING ADHESIVES | PLASTIC REPAIR | SEAM SEALERS  
SPECIALTY COATINGS | TEXTURE COATINGS | SOUND DAMPENING | CHIP GUARD COATINGS  
RUST PREVENTERS | UNDERCOATINGS | PRIMERS | ADHESION PROMOTERS



**GET THE FULL LIST OF SEM'S OEM RECOMMENDATIONS AT:**  
[semproducts.com/oem](http://semproducts.com/oem)



**GMC**



**DODGE**

**Jeep**



**ACURA**



**HONDA**

# 02

## PREP & CLEAN

Interior & Exterior Prep	2
Spray Gun Cleaners	2

# 04

## REPAIR

Adhesives	4 – 5
Fillers & Glazes	5
2K Seam Sealers	7
1K Seam Sealers	7
Plastic Repair	8
Sound Dampening	9
Applicators & Equipment	10 – 12
Repair Accessories	10 – 12
Fiberglass Accessories	10

# 14

## REFINISH

Primers	14
Custom Finishes	16 – 17
OEM Refinishing System	18 – 19
Adhesion Promoters	19
<i>Bumper Coater</i>	20
Flexible Coatings	20 – 25
Aerospace	25
Texture Coating	29
Marine	30
Trim Paints	31
Aerosol Filling	33
General Purpose Aerosols	33
Blending Solvent	33
<i>Power Station</i>	34 – 35

# 36

## PAINT FINISHING & DETAILING

Paint Finishing	36
Detailing	36 – 37
Equipment	37

# 38

## RUST & CORROSION

Rust Converters & Sealers	38
Rust Prevention	38
Rust Coatings	38
Applicator Equipment	10 – 12

# 39

## PROTECTIVE COATINGS

Undercoatings	39
Chip Guards	40
Truckbed Liners	43
Applicator Equipment	10 – 12

# 44

## ASSORTMENTS

Cabinets	44
Racks	45
Counter Displays	45

## HOW TOS

Repairing a Bumper Tab	5
Sound Dampening	9
Refinishing a Radiator Support	18
Bumper Refinishing	20
Plastic Refinishing	26
Leather Refinishing	27
Vinyl Refinishing	28
Duplicating OEM Texture	29
Rust Preventer Cavity Wax	39
2K Urethane Chip Guard	40

## BRANDS

BUMPER COATER™	20
BUMPER BITE™	5
CARBO FILL+™	5
★ CLASSIC COAT™	20, 45
★ COLOR COAT™	20 – 25
CUSTOM FILL™	33
★ DUAL-MIX™	4 – 9, 13, 44
★ EZ-COAT™	19, 44
FACTORY PACK™	18 – 19
GRIP TIDE™	30
HOT ROD	16
METAL BITE™	5
MINI-MAX™	5, 8
MOTHERS®	36 – 37
MULTI-COAT™	33
MULTIMAX™	33
ORBIT™	6, 13
POWER STATION®	34 – 35
PRO-TEX™	40, 43
ROCK-IT XC™	42 – 43
RUST MORT™	38
RUST SEAL™	38
RUST SHIELD™	38
RUST TRAP™	38
★ SURE-COAT™	24 – 26
TRIM BLACK	31
★ TRIM BLACK ULTRA	31
★ VINYL COAT™	30, 45
XXX	2, 19
★ ZINCWELD™	14
★ OEM Recommended	



Proper preparation is the foundation to a quality repair. SEM prep products are specifically designed for each substrate to eliminate contaminants & maximize adhesion of top coats & repair materials.

### SEM SOAP

Mild abrasive cleaner used as the first step in refinishing flexible substrates.

- Gravitates into surface & floats contaminants for easy removal
- Mild abrasive helps with adhesion
- Foaming action removes body oils & other water soluble contaminants



#### Suitable Substrates:

- Vinyl
- Leather
- Plastic

PART#	SIZE
39362	16 oz. Tube

### VINYL PREP

Strong solvent blend critical to refinishing vinyl.

- Removes oil, wax & grease
- Temporarily softens substrate
- Works quickly



#### Suitable Substrates:

- Vinyl

PART#	SIZE
38343	16 oz. Aerosol
38344	Quart

### PLASTIC & LEATHER PREP

A mild solvent blend to clean plastic & leather prior to refinishing.

- Removes mold release, fingerprints, grease & oil
- Will not soften or distort plastic parts
- Easy to use



#### Suitable Substrates:

- Plastic
- Leather
- Carpet & Velour

PART#	SIZE
38351	Gallon
38353	16 oz. Aerosol
38354	Quart

### XXX UNIVERSAL GUN CLEANER

Quickly removes solvent-based & waterborne coatings from spray equipment.

- Removes waterborne or solvent-based paint & overspray
- 100% virgin solvent formula
- 2-in-1 cleaner reduces products needed in collision center



PART#	SIZE
77763	20 oz. Aerosol

### SCUFF & CLEAN

An abrasive paste that cleans & prepares panels for repair or refinish. Improved formula provides better sudsing, easier rinsing & no settling.

- Perfect for bumper covers
- Removes wax, grease, & road grime
- Uniform scratch improves top coat adhesion
- Easier rinsing
- No shaking or stirring necessary



#### Suitable Substrates:

- Primed or painted surfaces
- Raw plastic

PART#	SIZE
38391	Gallon Pump
38398	16 oz. Tube

### SEM SOLVE

A virgin solvent blend to clean panels prior to refinish or repair.

- Removes wax, grease, road tar, oil, silicone, paint overspray & bug remnants
- Easy to use
- Leaves no residue



#### Suitable Substrates:

- Bare metal
- Primed or painted surfaces
- SMC & plastic – limit exposure

PART#	SIZE
38371	Gallon
38373	20 oz. Aerosol
38374	Quart
38375	5 Gallon

### SPRAYABLE SEAM SEALER GUN CLEANER

Blend of solvents to help clean one-component sprayable seam sealer applicators.

- High strength virgin solvent blend
- Does not contain chlorinated solvents
- Perfect when changing sealer colors
- Attached straw for tight areas



PART#	SIZE
29433	20 oz. Aerosol

### XXX UNIVERSAL SURFACE CLEANER

Compliant, waterborne cleaner that removes solvent & water soluble contaminants prior to refinishing.

- 2-in-1 cleaner reduces products needed in collision center
- Helps eliminate static for improved metallic orientation & reduced dust contamination
- Solvent strong in waterborne formula
- Exceptional grease-cutting power



#### Suitable Substrates:

- Primed or painted surfaces
- Vinyl
- Aluminum
- Leather
- Plastic
- Bare Steel

PART#	SIZE
77771	Gallon
77774	Quart

### XXX UNIVERSAL ADHESIVE REMOVER

Mild solvent blend used to remove adhesive residue left by tapes, decals & body molding as well as dirt, road tar, sap, wax, silicone, grease, oil & bugs from interior or exterior surfaces.

- Quick acting formula dissolves adhesive residue, tar & more
- Will not damage thoroughly cured paint when used as directed
- Will not soften, discolor, or distort plastic, vinyl, or fabric when used as directed



#### Suitable Substrates:

- Plastic
- OEM & refinished panels
- Bare aluminum & steel
- Vinyl
- Leather
- Glass

PART#	SIZE
77783	16 oz. Aerosol
77784	Quart







# DUAL-MIX™

ADHESIVES

PLASTIC REPAIR

SEALERS

SOUND DAMPENING



Bumper to bumper. Roof to rockers.  
**FOREVER WARRANTIED.\***



## ADHESIVES SEE PAGE 4

- Roof Skins
- Door Skins
- Applique Panels
- Quarter Panels
- Plastic Tabs & Brackets
- Structural Components

## PLASTIC REPAIR SEE PAGE 8

- Bumper Covers
- Interior Plastics
- Plastic Tabs & Brackets
- Molded Body Panels

## SEAM SEALERS SEE PAGE 7

- Roof Skins
- Door Skins
- Strut Towers
- Floor Pans
- Fender Wells
- Body Pans & Trunk Areas

## SOUND DAMPENING SEE PAGE 9

- Roof Bows
- Hoods
- Door Intrusion Beams
- Rocker Panels & Floor Pans
- Quarter Panels
- Body Pans & Trunk Areas
- Deck Lids & Filler Necks

\*Visit [semproducts.com/warranty](http://semproducts.com/warranty) for complete Dual-Mix warranty information.

Order a copy of the Dual-Mix Catalog at [semproducts.com](http://semproducts.com)

SEM adhesives are formulated with the technician in mind. With epoxy, acrylic & urethane technologies, no matter the substrate or job size, SEM can cover all your adhesive application needs.

ROOF SKINS | DOOR SKINS | APPLIQUE PANELS | QUARTER PANELS | PLASTIC TABS & BRACKETS | STRUCTURAL COMPONENTS

PART#	TWO COMPONENT PRODUCT	WORKING TIME	SET TIME	HEAT SET TIME	CURE TIME	HEAT CURE TIME	RESIN	SIZE
39310	Insta-Bond 2 Component Kit	-	Instant	-	-	-	Cyanoacrylate	3 oz. Kit
39311	Insta-Bond Adhesive	-	Instant	-	-	-	Cyanoacrylate	1 oz.
39322	Insta-Bond Accelerator	-	-	-	-	-	-	2 oz.
39337	Dual-Mix Door Skin & SMC Adhesive	30 Min	2 Hr	-	24 Hr	1 Hr	Epoxy	7 oz. Cartridge
39537	Dual-Mix Weld-Bond Adhesive	1 Hr	3 Hr	-	24 Hr	1 Hr	Acrylic	7 oz. Cartridge
39747	Dual-Mix Multi-Purpose Panel Adhesive	90 Min	4 Hr	-	24 Hr	1 Hr	Epoxy	7 oz. Cartridge
39757	Dual-Mix Structural Impact Resistant Adhesive	1 Hr	8 Hr	15 Min	48 Hr	30 Min	Epoxy	7 oz. Cartridge
39897	Dual-Mix Patch Panel Adhesive	10 Min	20 Min	-	30 Min	15 Min	Acrylic	7 oz. Cartridge
40202	Dual-Mix Quick Set 20	15 Sec	20 Sec	-	15 Min	-	Urethane	1.7 oz. Cartridge
40207	Dual-Mix Quick Set 20	15 Sec	20 Sec	-	15 Min	-	Urethane	7 oz. Cartridge
40502	Dual-Mix Quick Set 50 – Black	45 Sec	50 Sec	-	15 Min	-	Urethane	1.7 oz. Cartridge
40507	Dual-Mix Quick Set 50 – Black	45 Sec	50 Sec	-	15 Min	-	Urethane	7 oz. Cartridge
40517	Dual-Mix Quick Set 50 – Clear <b>NEW</b>	45 Sec	50 Sec	-	15 Min	-	Urethane	7 oz. Cartridge
41807	Dual-Mix Quick Set 180	3 Min	30 Min	-	24 Hr	-	Urethane	7 oz. Cartridge
68432	Mini-Max General Purpose Adhesive	3 Min	7 Min	-	1 Hr	15 Min	Epoxy	1 oz. Cartridge
68442	Mini-Max Clear Fast Set Adhesive	2 Min	5 Min	-	1 Hr	-	Epoxy	1 oz. Cartridge

### DUAL-MIX STRUCTURAL IMPACT RESISTANT ADHESIVE (SIRA)

For bonding structural & non-structural components where specified by the vehicle manufacturer.

- Dual-Mix Forever Warranty\*
- OEM recommended
- Exceptional impact & peel strength
- Excellent corrosion resistance
- Spacer beads for consistent bond line thickness
- Rivet & weld bonding compatible

PART#	SIZE
39757	7 oz. Cartridge



### DUAL-MIX MULTI-PURPOSE PANEL ADHESIVE

For panel bonding of steel, aluminum, SMC & fiberglass.

- Dual-Mix Forever Warranty\*
- OEM recommended
- Exceptional impact & peel strength
- Long working time
- Excellent corrosion resistance
- Spacer beads for consistent bond line thickness
- Non-sag formula
- Compatible with MIG or STRSW welding

PART#	SIZE
39747	7 oz. Cartridge



### DUAL-MIX DOOR SKIN & SMC ADHESIVE

For quickly bonding any combination of steel, aluminum, fiberglass & SMC.

- Dual-Mix Forever Warranty\*
- OEM recommended
- Excellent corrosion protection
- Bonds multiple substrates
- Non formula

PART#	SIZE
39337	7 oz. Cartridge



### DUAL-MIX WELD-BOND ADHESIVE

Formulated to bond metal surfaces without the use of primer.

- Dual-Mix Forever Warranty\*
- OEM recommended
- Spacer beads for consistent bond line thickness
- Excellent environmental resistance

PART#	SIZE
39537	7 oz. Cartridge



### DUAL-MIX PATCH PANEL ADHESIVE

For quickly bonding metal panels without the use of primer.

- Dual-Mix Forever Warranty\*
- OEM recommended
- Non-sag formula
- Quick cure time

PART#	SIZE
39897	7 oz. Cartridge



### DUAL-MIX QUICK SET 20

A very fast, opaque, urethane adhesive designed for bumper tab repair & bonding most small plastic, steel & aluminum parts.

- Dual-Mix Forever Warranty\*
- OEM recommended
- High strength & sandable
- Bonds multiple substrates
- Non formula
- Very fast setting

PART#	SIZE
40202	1.7 oz. Cartridge
40207	7 oz. Cartridge



### DUAL-MIX QUICK SET 50

General purpose, urethane adhesive with a 50 second set time for bonding most plastic, steel, aluminum SMC & fiberglass parts.

- Dual-Mix Forever Warranty\*
- OEM recommended
- High strength & sandable
- Bonds multiple substrates
- Non formula
- Fast setting

PART#	COLOR	SIZE
40502	Black	1.7 oz. Cartridge
40507	Black	7 oz. Cartridge
40517	Clear <b>NEW</b>	7 oz. Cartridge



\*Visit [semproducts.com/warranty](http://semproducts.com/warranty) for complete Dual-Mix warranty information.

**DUAL-MIX QUICK SET 180**

General purpose, black, urethane adhesive with a three minute working time designed for repairing & bonding most small to medium plastic, steel, aluminum, glass, SMC & fiberglass parts.

- **Dual-Mix Forever Warranty\***
- **OEM recommended**
- High strength & sandable
- Bonds most substrates
- Non-sag formula
- Extended 3 minute working time



PART#	SIZE
<b>41807</b>	7 oz. Cartridge

**MINI-MAX™ GENERAL PURPOSE ADHESIVE**

For fast bonds on most surfaces.

- Exceptional adhesion
- Ideal working time
- Bonds multiple substrates



PART#	SIZE
<b>68432</b>	1 oz. Cartridge

\*Visit [semproducts.com/warranty](http://semproducts.com/warranty) for complete Dual-Mix warranty information.

**MINI-MAX CLEAR FAST SET ADHESIVE**

For an invisible bond on plastic, metal, fiberglass & wood.

- High strength
- Fast cure
- Bonds multiple substrates



PART#	SIZE
<b>68442</b>	1 oz. Cartridge

**INSTA-BOND**

Combination of cyanoacrylate adhesive & accelerator for instant bonding of small parts.

- **OEM recommended**
- Holds torn plastic together during repair
- Provides high strength bonds
- Accelerator creates an instant bond



PART#	SIZE
<b>39310</b>	3 oz. Kit
<b>39311</b>	1 oz. Bottle
<b>39322</b>	2 oz. Bottle

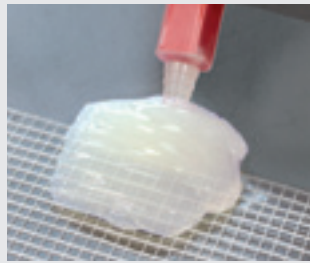


**Repairing A Bumper Tab**

WITH NEW **DUAL-MIX QUICK SET 50 – CLEAR**

Prepare surface & **Dual-Mix** cartridge as instructed in the **Technical Data Sheet**.

For badly torn damage, drill 1/8" holes approximately 1/2" apart into the repair area. This will help lock the repair material in place.



Cut a piece of **Plastic Repair Contouring Tape** twice the length of the repair.  
Dispense **Dual-Mix Quick Set 50 – Clear** onto **Plastic Repair Contouring Tape**.



Apply both to the repair area & mold into shape using your gloved hands or a spreader.  
Allow the adhesive to cure for 5 minutes before removing the plastic film.



Sand with a P80 – P180 grit disc to desired shape & drill as needed.  
*The clear formula allows you to see exactly where the original hole is located.*

**FILLERS & GLAZES**

When repairing pinholes, scratches & minor damage, **SEM** has a range of high quality products to suit your needs. All **SEM** fillers & glazes come with the same cream hardener reducing likelihood of hardener errors.

**METAL BITE™ FINISHING GLAZE**

Two-component, polyester finishing glaze that quickly fills sand scratches & other minor imperfections.

- Optimized viscosity flows into surface imperfections diminishing pinholes & bridging over scratches
- Fast drying to a tack-free finish
- Exceptional sanding qualities extend life of sandpaper
- Can be applied over properly prepped OE paint
- Flexible for use on semi-flexible plastics



PART#	SIZE
<b>39592</b>	24 oz. Tube
<b>39599</b>	15 oz. Pouch

**BUMPER BITE™ FLEXIBLE GLAZE**

Two-component, flexible polyester filler that quickly fills sand scratches, pinholes, & minor imperfections on many automotive substrates.

- Extremely flexible for enhanced resistance against cracking
- Fast drying to a tack-free finish
- Exceptional sanding qualities extend life of sandpaper
- Can be applied over properly prepped OE paint
- Excellent adhesion



PART#	SIZE
<b>40482</b>	16 oz. Tube
<b>40489</b>	14 oz. Pouch

**CARBO FILL+™ FILLER**

Two-component, carbon fiber & short strand fiberglass enriched filler for repairing SMC, fiberglass, rigid plastic, steel & aluminum.

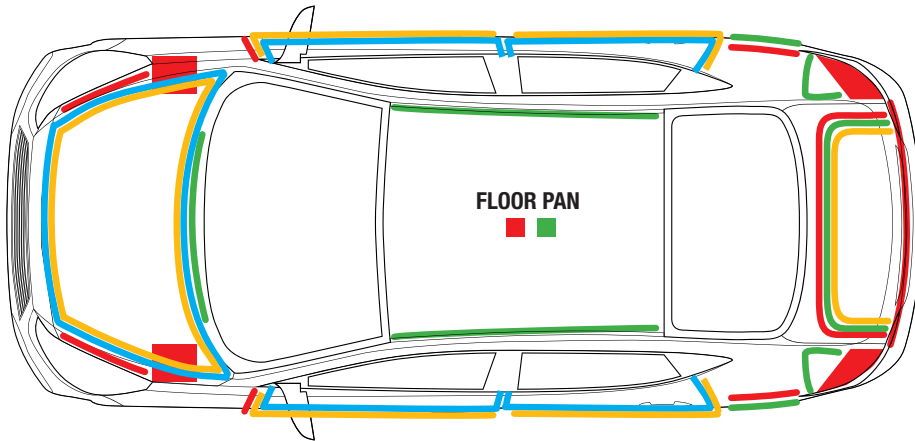
- Carbon fiber & short strand fiberglass reinforced
- Will not stain or bleed through
- Can be applied over properly prepped OE paint
- Exceptional sanding qualities extend life of sandpaper



PART#	SIZE
<b>40542</b>	16 oz. Tube
<b>40549</b>	14 oz. Pouch



# EASILY DUPLICATE OEM SEAM SEALER BEADS



**COMMON APPLICATIONS KEY**

- ORBIT
- EXTRUSION NOZZLE
- DOORSKIN NOZZLE
- VERSA-TIP



**ORBIT™**  
Patent Pending

Duplicates OE seam sealer ripple beads commonly found on strut towers, trunk pans & rear body pans in many newer vehicles.



**EXTRUSION NOZZLE**

Specialty tip for creating various beads & offsets.

Requires **ORBIT 2K Adapter** for use with two-component cartridges.

**29322**



**DOOR SKIN NOZZLE**

Specialty flanged tip that quickly duplicates the appearance of offset door skin seam sealer beads.

Requires **ORBIT 2K Adapter** for use with two-component cartridges.

**29312**



**VERSA-TIP**

A customizable tip, graduated & notched for easy trimming to duplicate 0.5", 0.75", 1", 1.25" & 1.5" flat, ribbon beads out of 7 oz., two-component seam sealer cartridges.

**70070**



**!** ORBIT, Extrusion Nozzle & Door Skin Nozzle work with 1K & 2K seam sealer.



**SEE ALL 1K & 2K CARTRIDGE NOZZLES ON PAGES 10 & 11**

SEM offers a comprehensive line of two-component & one-component seam sealers to meet your repair requirements & allow you to match OEM specifications.

ROOF SKINS | DOOR SKINS | STRUT TOWERS | FLOOR PANS | FENDER WELLS | BODY PANS & TRUNK AREAS

PART#	TWO-COMPONENT PRODUCT	WORKING	SET TIME	TOP COAT TIME	CURE TIME	SIZE
39377	Dual-Mix Seam Sealer – Gray	10 Min	15 Min	0	1 Hr	7 oz. Cartridge
39387	Dual-Mix Self Leveling Seam Sealer	10 Min	15 Min	15 Min	1 Hr	7 oz. Cartridge
39477	Dual-Mix Seam Sealer – Beige	10 Min	15 Min	0	1 Hr	7 oz. Cartridge
39777	Dual-Mix High-Build Self Leveling Seam Sealer	10 Min	15 Min	15 Min	1 Hr	7 oz. Cartridge
40177	Dual-Mix Heavy Bodied Seam Sealer – Gray <b>NEW</b>	10 Min	15 Min	0	1 Hr	7 oz. Cartridge
40277	Dual-Mix Heavy Bodied Seam Sealer – Beige <b>NEW</b>	10 Min	15 Min	0	1 Hr	7 oz. Cartridge
40377	Dual-Mix Heavy Bodied Seam Sealer – Black	10 Min	15 Min	0	1 Hr	7 oz. Cartridge
40477	Dual-Mix Heavy Bodied Seam Sealer – White	10 Min	15 Min	0	1 Hr	7 oz. Cartridge

PART#	ONE-COMPONENT PRODUCT	WORKING	SET TIME	TOP COAT TIME	CURE TIME	SIZE
29362	1K Seam Sealer – White	5 – 10 Min	20 – 30 Min	0 – 24 Hr	24 Hr	10.1 oz. Tube
29372	1K Seam Sealer – Gray	5 – 10 Min	20 – 30 Min	0 – 24 Hr	24 Hr	10.1 oz. Tube
29382	1K Seam Sealer – Beige	5 – 10 Min	20 – 30 Min	0 – 24 Hr	24 Hr	10.1 oz. Tube
29392	1K Seam Sealer – Black	5 – 10 Min	20 – 30 Min	0 – 24 Hr	24 Hr	10.1 oz. Tube
29462	2-IN-1 Seam Sealer – White	20 – 40 Min	1 Hr	0 – 24 Hr	24 Hr	9.5 oz. Tube
29472	2-IN-1 Seam Sealer – Gray	20 – 40 Min	1 Hr	0 – 24 Hr	24 Hr	9.5 oz. Tube
29482	2-IN-1 Seam Sealer – Beige	20 – 40 Min	1 Hr	0 – 24 Hr	24 Hr	9.5 oz. Tube
29492	2-IN-1 Seam Sealer – Black	20 – 40 Min	1 Hr	0 – 24 Hr	24 Hr	9.5 oz. Tube



**DUAL-MIX SEAM SEALERS**

Medium viscosity, epoxy sealer for use on interior or exterior seams, joints & voids.

- Dual-Mix Forever Warranty\*
- OEM recommended
- Direct to metal capable
- Paintable immediately\*\*
- Will not shrink, harden or crack
- Non-sag formula duplicates OEM sealers
- Optimized viscosity for softened or rolled edges
- Fast cure increases production
- Sprayable for additional versatility



PART#	COLOR	SIZE
39377	Gray	7 oz. Cartridge
39477	Beige	7 oz. Cartridge

**DUAL-MIX SELF LEVELING SEAM SEALER**

Epoxy sealer for drip rails, roof seams & trunk seams.

- Dual-Mix Forever Warranty\*
- OEM recommended
- Direct to metal on non-flexing roof skins
- Paintable in 15 minutes
- Excellent self leveling properties
- Flows into crevice
- Will not shrink, harden or crack
- Permanently flexible



PART#	SIZE
39387	7 oz. Cartridge

\*Visit [semproducts.com/warranty](http://semproducts.com/warranty) for complete Dual-Mix warranty information.

\*\* Paintable with most solvent based paint system

**DUAL-MIX HEAVY BODIED SEAM SEALER**

High viscosity, epoxy for use on interior or exterior seams, joints & voids.

- Dual-Mix Forever Warranty\*
- OEM recommended
- Direct to metal capable
- Paintable immediately\*\*
- Fast cure increases production
- Sprayable for additional versatility
- Correct color minimizes post-inspection liability
- Fast cure increases production
- Remains flexible without shrinking or cracking
- Ideal for use with NEW ORBIT™ to duplicate OE ripple bead



PART#	COLOR	SIZE
40177	Gray <b>NEW</b>	7 oz. Cartridge
40277	Beige <b>NEW</b>	7 oz. Cartridge
40377	Black	7 oz. Cartridge
40477	White	7 oz. Cartridge

**DUAL-MIX HIGH-BUILD SELF LEVELING SEAM SEALER**

Controlled flow epoxy ideal for use on roof seams, drip rails & trunk seams.

- Dual-Mix Forever Warranty\*
- OEM recommended
- Direct to metal on non flexing roof skins
- Paintable in 15 minutes
- Will not shrink, harden or crack
- Permanently flexible



PART#	SIZE
39777	7 oz. Cartridge

\*\* Paintable immediately with most solvent based paint systems.

**1K SEAM SEALER**

Versatile sealer for sealing interior or exterior seams, joints & voids.

- OEM recommended
- Direct to metal capable
- Paintable immediately\*\*
- Remains flexible without shrinking or cracking
- Colors match many OEM sealers
- Corrosion resistant
- Resistance weldable



PART#	COLOR	SIZE
29362	White	10.1 oz. Tube
29372	Gray	10.1 oz. Tube
29382	Beige	10.1 oz. Tube
29392	Black	10.1 oz. Tube

**2-IN-1 SEAM SEALER**

Beadable & sprayable, 1K MSP seam sealer for interior or exterior seams & OEM sprayed sound-dampening pads.

- OEM recommended
- Optimized viscosity for beading, spraying or brushing
- Direct to metal capable
- Paintable immediately\*\*
- Remains flexible without shrinking, cracking or peeling
- Colors matched to OEM seam sealers
- Weather & corrosion resistant
- Resistance weldable (STRSW)



PART#	COLOR	SIZE
29462	White	9.5 oz. Tube
29472	Gray	9.5 oz. Tube
29482	Beige	9.5 oz. Tube
29492	Black	9.5 oz. Tube

Increase shop revenue through plastic repair. From bumpers & ground effects to trim components & mirrors, repairing plastic parts is often less expensive than replacement.

BUMPER COVERS | INTERIOR PLASTICS | PLASTIC TABS & BRACKETS | MOLDED BODY PANELS

PART#	TWO COMPONENT PRODUCT	WORKING TIME	SET TIME	SAND TIME AIR DRY	SAND TIME PAINT BOOTH	SAND TIME CURING LAMP	TOP COAT TIME	CURE TIME	SIZE
39767	Dual-Mix Problem Plastic Repair Material	5 Min	-	15 Min	-	-	20 Min	1 Hr	7 oz. Cartridge
39847	Dual-Mix Multi-Plastic Repair Material	7 Min	-	15 Min	-	-	20 Min	1 Hr	7 oz. Cartridge
40887	Dual-Mix Rigid Plastic Repair Material <b>NEW</b>	35 Min*	3 Hr*	3 Hr*	30 Min*	10 Min*			7 oz. Cartridge
68422	Mini-Max Bumper Repair	5 Min	-	15 Min	-	-	20 Min	1 Hr	1 oz. Cartridge

\*Working time: 70°F (21°C). Set time: 70°F (21°C). Sand time air dry: 70°F (21°C). Sand time paint booth: 140°F (60°C). Sand time curing lamp: 180°F (82°C)

### DUAL-MIX PROBLEM PLASTIC REPAIR MATERIAL

Epoxy based filler for repairing olefin-based plastics & similar rigid & semi-rigid substrates.

- Dual-Mix Forever Warranty\*
- OEM recommended
- No adhesion promoter necessary
- Excellent sanding & feather edge
- Does not shrink or pinhole



PART#	SIZE
39767	7 oz. Cartridge

### DUAL-MIX MULTI-PLASTIC REPAIR MATERIAL

Epoxy for fast repairs on virtually all plastic bumper covers.

- Dual-Mix Forever Warranty\*
- OEM recommended
- No adhesion promoter necessary
- Exceptional sanding & feather edge
- Remains flexible
- Does not shrink or pinhole
- Excellent leveling & sag resistance



PART#	SIZE
39847	7 oz. Cartridge

### DUAL-MIX RIGID PLASTIC REPAIR MATERIAL

Fiber-enriched epoxy used for bonding & cosmetic repair of carbon fiber, SMC, Metton®\*\*, fiberglass & other rigid plastics.

- Dual-Mix Forever Warranty\*
- OEM recommended
- One product for bonding & repair
- Exceptional bonding strength
- Outstanding sanding & feather edge
- Heat set options available
- Fiber-enriched formula helps control swelling & halos
- Easy to dispense & spread



PART#	SIZE
40887 <b>NEW</b>	7 oz. Cartridge

### MINI-MAX BUMPER REPAIR

For repairing small damage to bumpers & rigid or semi-rigid plastics.

- No adhesion promoter necessary
- Exceptional adhesion
- Excellent sanding & feather edge
- Does not shrink or pinhole
- Zero VOC



PART#	SIZE
68422	1 oz. Cartridge

### PLASTIC REPAIR REINFORCING TAPE

Non-backed mesh tape to strengthen repairs on plastic & fiberglass.

- Light adhesive for easy application
- Idea width for tears



PART#	SIZE
70006	36' Roll

### PLASTIC REPAIR CONTOURING TAPE

Film-backed reinforcing tape used to strengthen repairs on plastic & fiberglass & for creating or repairing bumper tabs

- Backing material perfect for tab repair
- Ideal width for holes & large repairs



PART#	SIZE
70007	15' Roll

\*Visit [semproducts.com/warranty](http://semproducts.com/warranty) for complete Dual-Mix warranty information.

\*\*Metton is a registered trademark of Metton America, Inc.

See how to repair a bumper tab with **Dual-Mix Quick Set 50 – Clear**  
PAGE 5



WATCH THE VIDEO TO FIND OUT HOW YOU CAN REPAIR BUMPERS FASTER WITH **DUAL-MIX**.



[semproducts.com/repair-bumpers-2x-faster](http://semproducts.com/repair-bumpers-2x-faster)



Sound dampening is a critical step to reduce noise & vibration when completing repairs on roofs, quarter panels or other vehicle cavities.

ROOF BOWS | HOODS | DOOR INTRUSION BEAMS | ROCKER PANELS & FLOOR PANS | QUARTER PANELS  
BODY PANS & TRUNK AREAS | DECK LIDS & FILLER NECKS

PART#	TWO-COMPONENT PRODUCT	WORKING TIME	SET TIME	TOP COAT TIME	CURE TIME	SIZE
39357	Dual-Mix Flexible Urethane Foam	15 Sec	2 Min	15 Min	15 Min	7 oz. Cartridge
39977	Dual-Mix Panel Vibration Control Material	1 Hr	1 Hr	-	1 Hr	7 oz. Cartridge
39997	Dual-Mix Rigid Urethane Foam	45 Sec	5 Min	15 Min	15 Min	7 oz. Cartridge
40977	Dual-Mix Sound & Seal Sprayable Coating	10 Min	15 Min	30 Min	1 Hr	7 oz. Cartridge

**DUAL-MIX FLEXIBLE URETHANE FOAM**

Black foam that duplicates OEM foams used for sound deadening.

- Dual-Mix Forever Warranty\*
- OEM recommended
- Excellent sound dampening qualities
- Stops panel flutter
- 10x volume expansion
- Does not require moisture to cure
- Bonds to most substrates



PART#	SIZE
39357	7 oz. Cartridge

**Dual-Mix Forever Warranty**

When used according to product instructions. SEM guarantees to the purchaser that all Dual-Mix products will perform to specifications for the life of the vehicle. This warranty covers reasonable costs for labor, loss of use of the vehicle, parts & materials only, & excludes consequential or incidental damages. When applicable, OEM repair procedures must be followed.

**DUAL-MIX SOUND & SEAL SPRAYABLE COATING**

A unique sprayable epoxy/urethane blend for replacing OEM coatings under rocker panels, in trunks, on floor sections & frame rails.

- Dual-Mix Forever Warranty\*
- OEM recommended
- Will not shrink, harden or crack
- Retains flexibility
- Excellent adhesion to properly prepped surfaces
- Paintable in 30 minutes



PART#	SIZE
40977	7 oz. Cartridge

\*Visit [semproducts.com/warranty](http://semproducts.com/warranty) for complete Dual-Mix warranty information.

**DUAL-MIX RIGID URETHANE FOAM**

Urethane expanding foam for filling pillars, posts & box sections.

- Dual-Mix Forever Warranty\*
- OEM recommended
- Meets UL 94HB flammability tests
- Restores crash parts to OEM condition
- 20x volume expansion
- Reinforces weak panels
- Fast cure



PART#	SIZE
39997	7 oz. Cartridge

**DUAL-MIX PANEL VIBRATION CONTROL MATERIAL**

Epoxy/urethane blend for reducing noise & vibration on roof skins & intrusion beams.

- Dual-Mix Forever Warranty\*
- OEM recommended
- Excellent sag resistance
- Reduces noise & vibration
- Protects against corrosion
- Exceptional flexibility



PART#	SIZE
39977	7 oz. Cartridge

**Sprayable Sound Dampening**

STANDARD OPERATING PROCEDURE



Clean with **SEM Solve** or **XXX Universal Surface Cleaner**. Wipe clean in one direction with clean, lint-free cloth.

SEM Solve & XXX Universal Surface Cleaner  
SEE PAGE 2



Sand primed surface with P180 grit sandpaper. Blow off & tack clean. Re-clean with **SEM Solve** or **XXX Universal Surface Cleaner**. Wipe clean in one direction with clean, lint-free cloth.



Place **Dual-Mix Sound & Seal Sprayable Coating** into **Universal Pneumatic Applicator**. Equalize cartridge until sides dispense equally. Attach **Quick Spray System** to cartridge.

- ⚠ Do not cut **Static Mixer** tip.

Universal Pneumatic Applicator & Quick Spray System  
SEE PAGE 10 & 12



Apply to necessary areas, duplicating existing texture in one coat.

- ⚠ Do not apply over **Self Etching Primer**.
- ⌚ To achieve various textures, modify the air pressure, spray distance & spray tip.



WATCH THE VIDEO & LEARN: SPRAYABLE SOUND DAMPENING  
[semproducts.com/sounddampening](http://semproducts.com/sounddampening)

2K APPLICATORS | 1K & 2K CARTRIDGE NOZZLES | STATIC MIXERS | FIBERGLASS REPAIR ACCESSORIES

### UNIVERSAL MANUAL APPLICATOR

Applicator for dispensing 7 oz. two-component cartridges.

- Ensures proper mix ratio
- Ideal gear ratio for smooth dispersion
- Release button for precision



PART#	SIZE
71119	Each

### UNIVERSAL PNEUMATIC APPLICATOR



Dispensing applicator for 7 oz. two-component cartridges.

- Decreases fatigue
- Increases efficiency
- Smooth, even dispensing
- Adjustable flow rate
- Use with **Quick Spray System** – see page 12

PART#	SIZE
70039	Each

### INTEGRAL NUT SQUARE STATIC MIXER



Mixing tips for use with 7 oz. two-component cartridge products.

PART#	SIZE
70011	6 Pack
70012	50 Pack

### VERSA-TIP

Customizable tips, graduated & notched for easy trimming to duplicate .5", .75", 1", 1.25" & 1.5" flat, ribbon beads out of 7 oz., two-component cartridges.



PART#	SIZE
70070	6 Pack

### DOOR SKIN NOZZLE

Specialty flanged tip that quickly duplicates the appearance of door skin seam sealer beads. Works with **29442 1K Sprayable Seam Sealer Applicator** or with 2K seam sealers when used with **ORBIT 2K Adapter**.



PART#	SIZE
29312	6 Pack

### EXTRUSION NOZZLE

Specialty tip for creating various bead sizes. Works with **29442 1K Sprayable Seam Sealer Applicator** or with 2K seam sealers when used with **ORBIT 2K Adapter**.



PART#	SIZE
29322	6 Pack

### 1.7 OZ. MANUAL APPLICATOR

Convenient & compact for dispensing 1.7 oz. **Dual-Mix** cartridges.

- Ensures proper mix
- Ideal for small repairs
- Mechanical advantage for easy dispensing



PART#	SIZE
70019	Each

### 1.7 OZ. TURBO STATIC MIXER

Mixing tips for use with 1.7 oz. **Dual-Mix** cartridge products.



PART#	SIZE
70020	6 Pack
70021	50 Pack

### 1K SEAM SEALER NOZZLE

Designed for use with **1K Seam Sealers**.



PART#	SIZE
29352	15 Pack

### FIBERGLASS CLOTH

4" X 12' roll of woven fiberglass cloth for reinforcing the backside repair of cracks or tears of composite plastics such as SMC, FRP (traditional fiberglass) & carbon fiber. Also used to create pyramid patches for cosmetic repair to help eliminate swelling commonly seen with composites.



PART#	SIZE
70025	4" x 12' Roll

### RELEASE FILM

5" X 12' roll of polyethylene plastic creates a barrier between repair materials & allows technicians to mold or press the product into place, then peel off effortlessly.



PART#	SIZE
70026	5" x 12' Roll

### FIBERGLASS ROLLER

3/8" X 3" aluminum roller presses composite repair materials into place to improve adhesion & remove air pockets. Best when used with **70026 Release Film**.



PART#	SIZE
70027	Each



ORBIT seam sealer ripple bead on a strut tower, see details on page 6.

1K APPLICATORS | UNDERCOATING APPLICATORS & WANDS | TEXTURE APPLICATORS

**1K PNEUMATIC APPLICATOR**

Air-driven applicator designed for use with our **SEM 1K Seam Sealers**.

- Reduces hand fatigue
- Adjustable flow rate
- Dispenses product consistently
- Ideal for frequent use or large jobs



PART#	SIZE
29342	Each

**1K SPRAYABLE SEAM SEALER APPLICATOR**

Premium applicator for **2-In-1 Seam Sealers**.

- Fully adjustable to match many sprayed seams
- Spray sound dampening pads
- Tight patterns with minimal overspray
- Able to apply material in beads
- No clean up if used regularly



PART#	SIZE
29442	Each



**2K URETHANE CHIP GUARD APPLICATOR**

For duplicating a variety of OE textures & chip guards.

- Specially designed extended tip to spray heavier textures
- Shorter pickup tube for use with **2K Urethane Chip Guard** bottle
- Tighter spray pattern for minimal overspray
- Reusable when cleaned with **XXX Universal Gun Cleaner**



PART#	SIZE
71103 <b>NEW</b>	Each

**ECONOMY COATING GUN**

Low cost, cast aluminum siphon gun for spraying bulk **Undercoating & Rock-It XC**.

- Sprays a variety of products including undercoatings, truckbed liners & chip guards
- Simple operation



PART#	SIZE
71102	Each

FOR SPRAY GUN & APPLICATOR CLEANERS, SEE PAGE 2

**PREMIUM UNDERCOAT APPLICATOR**

Siphon feed heavy plastic applicator for spraying truckbed liners, undercoatings & rust proofing.

- Adjustable pattern
- Easy to clean
- 0.5" pick up tube



PART#	DESCRIPTION
71109	Applicator
71110	Applicator & 1 Spray Wand

**SPRAY WAND**



28" plastic wand with a 360° spray pattern tip that sprays bulk **Undercoating & Rust Preventer Cavity Wax** behind body panels.

PART#	SIZE
71111	Each

**RUST PREVENTER AERO WAND**

24" aerosol wand that sprays a 360° pattern for applying **Rust Preventer Cavity Wax**.

PART#	SIZE
71120	Each



Contact your **SEM Rep** for a copy of the **SEM Circular**.

*It's a "Must Read" in every shop.*



### QUICK SPRAY SYSTEM STARTER KIT

Everything necessary to start spraying 2K sealers & sound dampening materials.

- Duplicate OEM sprayed seams
- Easy assembly & clean up

PART#	SIZE
70100	Each

#### KIT CONTAINS:

- 6 Quick Spray System Static Mixers
- 1 Air Baffle
- 1 Adapter Assembly
- 1 Retaining Ring
- 1 Round Air Cap
- 1 Flat Air Cap
- 1 PU Tubing

#### NOTE:

70039 Universal Pneumatic Applicator is not included in the Quick Spray System Starter Kit. Only use the Quick Spray System with specified SEM products.

PART#	COLOR
<i>Dual-Mix Seam Sealer</i>	
39377	Gray
39477	Beige
<i>Dual-Mix Heavy Bodied Seam Sealer</i>	
40177	Gray
40277	Beige
40377	Black
40477	White
<i>Dual-Mix Sound &amp; Seal Sprayable Coating</i>	
40977	

### A ADAPTER ASSEMBLY

Air regulator & hose for the Quick Spray System only.



PART#	SIZE
70104	Each

### B QUICK SPRAY AIR BAFFLE

Atomization tips used with the Quick Spray System only.



PART#	SIZE
70106	5 Pack

### C QUICK SPRAY SYSTEM STATIC MIXER



Extended mixing tips for use when spraying seam sealers & sound dampening materials.

PART#	SIZE
70103	6 Pack

### D FLAT AIR ASSEMBLY

Flat air cap & baffle for use in the Quick Spray System only.



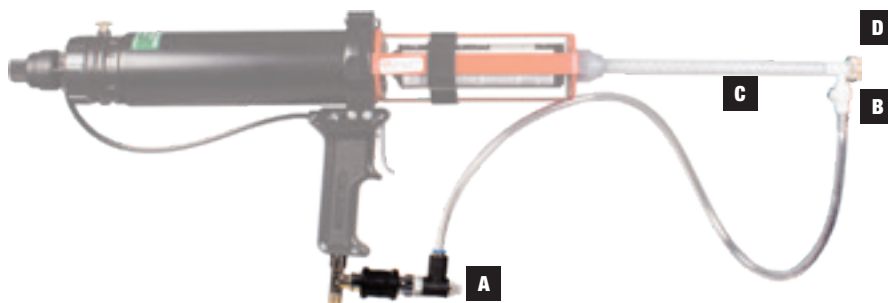
PART#	SIZE
70102	Each

### D ROUND AIR ASSEMBLY

Round air cap & baffle for use in the Quick Spray System only.



PART#	SIZE
70101	Each



## Be in the know!

Sign up for the **SEM** digital newsletter today & get special offers, new product info, SOPs, training & more, delivered to your inbox.

Sign up at:  
[semproducts.com/first](http://semproducts.com/first)



# DUAL-MIX™ HEAVY BODIED SEAM SEALER

A high viscosity, two-component epoxy for use on interior or exterior seams, joints and voids.



**NEW!**  
40177  
Gray

**NEW!**  
40277  
Beige



40377  
Black



40477  
White



- OEM recommended
- Dual-Mix Forever Warranty\*
- Direct to metal capable
- Paintable immediately\*\*
- Correct color minimizes post-inspection liability

- Non-sag formula holds tooling marks
- Fast cure increases production
- Remains flexible without shrinking or cracking
- Sprayable for additional versatility
- Ideal for use with NEW ORBiT tip to duplicate OE ripple bead

MEET

# ORBiT™

OE Ripple Bead Installation Tip  
PATENT PENDING



Minimize collision center's post-inspection liability by matching seam sealer color and texture. NOW, EASIER THAN EVER.

## IT'S TIME TO CHANGE THE GAME!



\*Visit [semproducts.com/warranty](http://semproducts.com/warranty) for complete Dual-Mix warranty information.  
\*\*Paintable immediately with most solvent based paint systems.

SEM fast drying primers achieve ideal film build, & apply & sand easily. With a product for every substrate, application, & environment, SEM primers are a great foundation for solvent or waterborne color.

## WATERBORNE FLEXIBLE PRIMER

### 2.1 VOC Compliant

Waterborne flexible coating for priming urethanes, plastics & other similar substrates.

- Exceptional adhesion
- Excellent sealing properties
- High solids formula
- Topcoat with most refinish materials
- Sands easily
- Ready to spray – no mixing

PART#	SIZE
39221	Gallon

## FLEXIBLE PRIMER SURFACER

Flexible, sandable primer capable of adhering to difficult plastics & hiding minor surface defects.

- Ready to spray
- Quick drying
- Easy to sand
- Topcoat with most refinish materials

PART#	SIZE
39131	Gallon
39133	16 oz. Aerosol
39134	Quart



## SELF ETCHING PRIMER

### VOC Compliant

Provides excellent adhesion & corrosion resistance to properly prepped steel & aluminum.

- Quick drying
- 3 colors available
- Bulk products are VOC compliant
- Packaged in gallons, quarts & aerosols

PART#	COLOR	SIZE
39671	Black	Gallon
39673	Black	20 oz. Aerosol
39674	Black	Quart
39681	Gray	Gallon
39683	Gray	20 oz. Aerosol
39684	Gray	Quart
39691	Green	Gallon
39693	Green	20 oz. Aerosol
39694	Green	Quart



## EZ COAT™

The original direct to metal coating that matches the color & gloss of factory primer & e-coat colors.

- OEM recommended
- Duplicates factory appearance
- Direct to steel & aluminum
- Quick drying & hiding
- Available in 9 popular OEM colors
- Paintable with most automotive basecoats
- Corrosion resistant
- Shop floor compliant (NESHAP 6H)

SEE PAGE 19 FOR PART NUMBERS FOR 9 EZ COAT AEROSOL COLORS



## GUIDE COAT BLACK

Helps detect low spots, sand scratches or other minor imperfections while sanding primer.

- Quick drying
- Improves production
- Will not clog sandpaper
- Helps create a perfect repair

PART#	SIZE
38203	16 oz. Aerosol



## PREMIUM POWDER GUIDE COAT

Dry powder for identifying low spots, pinholes & other surface defects when sanding primer.

- Dries instantly
- Sandable immediately
- Will not clog sandpaper
- No masking required
- No mess or waste

PART#	SIZE
38253	16 oz. Aerosol



## METALOCK™ DTM HIGH BUILD PRIMER

2K primer for use on steel, aluminum, SMC & fiberglass.

- Exceptional adhesion
- Outstanding corrosion protection
- Exceptional filling properties
- High build formula
- Sealer mixing option
- Easy to sand

PART#	SIZE
ML010	Kit

KIT CONTAINS: 1 – ML011 Primer, Gallon, 1 – MLH14 Hardener, Quart

### SOLD SEPARATELY:

PART#	PRODUCT	SIZE
ML014	Primer	Quart
MLH16	Hardener	Half Pint



## ZINCWELD™

Zinc-based weld-through primer that provides exceptional corrosion protection between welded substrates.

- OEM recommended
- Zinc-based formula for corrosion protection
- No flaking or peeling
- Not affected by cavity wax
- Provides corrosion protection around weld
- Low weld spatter formula
- Smooth spraying
- Compatible with MIG & STRSW welding

PART#	SIZE
40773	16 oz. Aerosol



## HIGH-BUILD PRIMER SURFACER

Flexible acrylic coating for priming steel, aluminum, urethane, fiberglass & plastics.

- Provides exceptional adhesion
- Excellent filling properties
- Works on multiple substrates, including metal & plastic
- Easy to sand
- Topcoat with most refinish materials

PART#	COLOR	SIZE
42003	Black	20 oz. Aerosol
42013	Gray	20 oz. Aerosol
42023	Beige	20 oz. Aerosol
42033	Rose	20 oz. Aerosol
42043	White	20 oz. Aerosol







## Uncompromising reliability, respect & results go hand in hand.

Leading manufacturer of automotive repair & refinish products, SEM Products, Inc., is now the **EXCLUSIVE** distributor of Mothers® Professional Polishes • Waxes • Cleaners, Inc. for the paint, body & equipment market in the United States & Canada.

**Visit [semproducts.com/mothers](http://semproducts.com/mothers) for details.**

Mothers® is a registered trademark of Mothers Polishes Waxes Cleaners Incorporated.



Whether your style is bright, chromatic colors or laid-back subtle nuances, *SEM* offers a product that's right for you. From basecoats, candies, fluorescents & effect pigments to our high quality line of matte finishes, *SEM* has your custom paint needs covered.

### HOT ROD BLACK

2K, matte, single stage black for low gloss accent stripes, hoods or entire vehicles.

- Durable & mar resistant
- Excellent resistance to chalking & fading
- Smooth & uniform finish



PART#	SIZE
<b>HR010</b>	Kit

KIT CONTAINS: 1 – HR014 Black Quart  
1 – HRC06 Catalyst Half Pint  
1 – HRR06 Reducer Half Pint

### LOW VOC HOT ROD COLORS

#### 2.8 VOC Compliant

2K, matte, single stage topcoat system for accent stripes, hoods & entire vehicles.

- Durable & mar resistant
- Excellent resistance to chalking & fading
- Smooth & uniform finish
- Black, silver, smoke & white
- Intermix for one-off colors



PART#	COLOR	SIZE
<b>HR010-LV</b>	Black	Kit
<b>HR020-LV</b>	Silver	Kit
<b>HR030-LV</b>	Smoke	Kit
<b>HR040-LV</b>	White	Kit

KIT CONTAINS: 1 – Low VOC Color Quart  
1 – HRC06-LV Catalyst Half Pint  
1 – HRR06-LV Reducer Half Pint

### HOT ROD CLEAR

#### 2.1 VOC Compliant

Provides the ultimate custom low gloss look on any color when painting accent stripes, hoods & entire vehicles.

- Durable 2K matte finish
- Smooth & uniform appearance
- Convenient kit format



PART#	COLOR	SIZE
<b>HRC40</b>	Clear	Kit

KIT CONTAINS: 1 – HRC40 Clear Quart  
1 – HRC06-LV Catalyst Half Pint  
1 – HRR06-LV Reducer Half Pint

### MIX CLEAR

1K clear used as a carrier for custom finish concentrates & effects pigments.

- Excellent color holdout
- Can be used as a mid-coat clear to protect artwork
- Transparent for vivid colors
- Minimizes tape tracking
- Fast drying



PART#	SIZE
<b>MC011</b>	Gallon
<b>MC014</b>	Quart

### BASE COLORS

Fast covering clean colors that provide maximum color effect for custom paint jobs.

- Exceptional pigmentation
- Ideal atomization
- Excellent adhesion
- Easy to apply with no recoat issues
- Accepts isocyanate hardener in multi-layer jobs



PART#	COLOR	SIZE
<b>02014</b>	Gold	Quart
<b>02024</b>	Silver	Quart
<b>02044</b>	Bright White	Quart
<b>02054</b>	Jet Black	Quart
<b>02064</b>	Titanium	Quart
<b>02094</b>	Lt Gold	Quart
<b>02114</b>	Bright Yellow	Quart
<b>02154</b>	Red	Quart

### LIGHTNING FX

Vibrant glass pearl pigments that provide extra brilliance & sparkle to custom paint jobs.

- Add to color or clear
- Highly reflective
- Adds intense sparkle in sunshine



PART#	COLOR	SIZE
<b>33012</b>	White Lightning	2 oz. Jar
<b>33022</b>	Sun Gold	2 oz. Jar
<b>33032</b>	Hurricane Red	2 oz. Jar
<b>33042</b>	Ultra Violet	2 oz. Jar
<b>33052</b>	Thunder Blue	2 oz. Jar
<b>33062</b>	Electro Green	2 oz. Jar



**CANDY CONCENTRATES**

Vibrant line of transparent pigments that add spectacular color to custom paint jobs.

- Outstanding depth & clarity
- Brilliant, clean colors
- Compatible with multiple paint technologies
- Combine with effect pigments for the ultimate custom look



PART#	COLOR	SIZE
03016	Winefire	Half Pint
03026	Sun Dance	Half Pint
03046	Aqua Blue	Half Pint
03056	Royal Blue	Half Pint
03086	Mandarin	Half Pint
03096	Mint Green	Half Pint
03106	Passion Purple	Half Pint
03116	Candy Apple Red	Half Pint
03126	California Gold	Half Pint
03156	Magenta	Half Pint

**FLAKES**

Precision cut resin coated chips for adding intense sparkle to custom paint jobs.

- Brilliant jewel-like colors
- Provides extreme effects
- Fade & solvent resistant
- Easy to apply



PART#	COLOR	SIZE
06014	Mini Gold	4 oz. Jar
06024	Mini Silver	4 oz. Jar
06034	Blue	4 oz. Jar
06044	Gold	4 oz. Jar
06054	Red	4 oz. Jar
06064	Green	4 oz. Jar
06124	Solar Fire	4 oz. Jar
06144	Silver Rainbow	4 oz. Jar
06154	Silver	4 oz. Jar

**FLUORESCENT CONCENTRATES**

Intense, eye-catching colors for creating custom graphics.

- Extra bright colors
- High visual impact
- Compatible with multiple paint technologies



PART#	COLOR	SIZE
03208	Fireball	Pint
03218	Caliente	Pint
03228	Stop Lite	Pint
03238	Maui Blue	Pint
03248	Mean Green	Pint
03258	Hotter Than Pink	Pint
03268	Marvey Magenta	Pint
03278	Wild Chartreuse	Pint
03288	Sun Spot	Pint

**PASTE PEARLS**

Concentrated effect pigments that add a mild frosted sparkle effect to custom paint jobs.

- Concentrated for easy mixing
- Highly reflective pigments
- Easy to create one-off colors



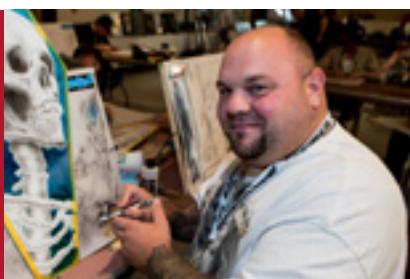
PART#	COLOR	SIZE
35202	Platinum	2 oz. Jar
35212	Red 2-Tone	2 oz. Jar
35222	Gold 2-Tone	2 oz. Jar
35232	Blue 2-Tone	2 oz. Jar
35242	Green 2-Tone	2 oz. Jar
35252	Violet 2-Tone	2 oz. Jar
35262	Orange 2-Tone	2 oz. Jar
35272	Aztec Gold	2 oz. Jar

**GO MOBILE**



In the shop or on the go, [semproducts.com](http://semproducts.com) has everything you need, when you need it.

- Technical Data Sheets, Safety Data Sheets, & product specs
- Videos & literature
- Training materials
- Distributor locator
- Streamlined & easy to use
- Scan any SEM QR code & pull up specific information immediately



“As an airbrush artist and custom painter, quality matters. I use SEM custom finish products because of their flawless quality. They are consistent everytime.”

**Eddie Zacharek**  
EZ Kustoms  
Clearwater, FL



Reduce cycle time to increase throughput with SEM's OEM Refinishing System. Shop floor compliant (NESHAP) aerosols eliminate mixing paint, waiting on a painter, tying up the paint booth, & cleaning spray guns. Now you can quickly refinish support parts, cut-ins & jambs.

## DECREASE CYCLE TIME. INCREASE THROUGHPUT.

The **OEM Refinishing System** uses aerosol technology to eliminate mixing paint, waiting on a painter, tying up the paint booth & cleaning spray guns. Now you can quickly refinish support parts, cut-ins & jambs directly on the shop floor.



- Use **SEM Solve** or **XXX Universal Surface Cleaner** to prep the surface
- Use **Ez Coat** aerosol to match OEM e-coat
- Use **Factory Pack** aerosol to match OEM basecoats
- Use **1K HS Clear** to finish the job

### Refinishing a Radiator Support

#### STANDARD OPERATING PROCEDURE

1

PREP



Clean with **SEM Solve** or **XXX Universal Surface Cleaner**. Wipe in one direction with dry, lint-free cloth. Scuff with P320 grit sandpaper or gray scuff pad.

Blow off & wipe with tack rag if needed.

2

EZ COAT™



Choose appropriate **Ez Coat** aerosol color. Apply 1 coat until hiding. Flash time achieved while moving across larger parts.

*i* Smaller parts may require 1 – 2 minutes to properly flash.

3

FACTORY PACK™



Choose appropriate **Factory Pack** aerosol color. Apply 1 coat until hiding. Flash time achieved while moving across larger parts.

*i* Smaller parts may require 1 – 2 minutes to properly flash.

4

1K CLEAR



Choose appropriate **1K HS Clear**.

Apply 1 coat until covered.

Allow 30 – 60 minutes before assembly or installation.

OEM REFINISHING SYSTEM		TRADITIONAL METHOD	
Process	Minutes	Process	Minutes
Move Car to Booth	0	Move Car to Booth	10
Prep	6	Prep	6
Wait on Painter	0	Wait on Painter	0 – ?
Mix All Primer & Paint	0	Mix All Primer & Paint	10
Apply <b>Ez Coat</b> aerosol	3	Apply Primer/Sealer	3
Flash Time	0	Flash Time	30
Clean Gun	0	Clean Gun	2
Apply <b>Factory Pack</b> aerosol	6	Apply Basecoat Color	6
Flash Time	0	Flash Time	30
Clean Gun	0	Clean Gun	2
Apply <b>1K HS Clear</b> (optional)	3	Apply Clear (optional)	3
Flash Time	0	Flash Time	15
Clean Gun	0	Clean Gun	2
Move Car Back to Shop	0	Move Car Back to Shop	10
18 MINUTES		129 MINUTES	

# REDUCE LABOR UP TO 85%

WHEN REFINISHING SUPPORT PARTS, CUT-INS & JAMBS

**Order a copy of the OEM Refinishing System booklet at [semproducts.com](http://semproducts.com)**

Because of its size, a radiator support will flash as you are finishing the part. For smaller parts, be sure to allow adequate flash time.

CHECK LOCAL VOC REGULATIONS TO ENSURE COMPLIANCE OF ALL PRODUCTS IN YOUR AREA. ALWAYS WEAR OSHA REQUIRED PERSONAL PROTECTION EQUIPMENT (PPE) TO ENSURE YOUR SAFETY.

**EZ COAT™**

The original direct to metal coating that matches the color & gloss of factory primer & e-coat colors.

**16 oz. Aerosol**

- OEM recommended
- Duplicates factory appearance
- Direct to steel & aluminum
- Quick drying & hiding
- Paintable with most automotive basecoats
- Corrosion resistant
- Shop floor compliant (NESHAP 6H)



PART#	COLOR
62213	Black
62223	Olive Green
62233	Light Green
62243	Gray
62253	Tan
62263	Olive Brown
62273	White
62283	Field Drab
62293	Dark Green

**EZ COAT  
6 PACK  
ASSORTMENT**



PART#	SIZE
62209	Kit

6 PACK CONTAINS 1 EACH OF:

PART#	COLOR
62213	Black
62223	Olive Green
62233	Light Green
62243	Gray
62253	Tan
62263	Olive Brown

**1K HS CLEAR**

High solids clearcoat for refinishing small accessories, door jambs, inner panels & new part cut-ins.

**20 oz. Aerosol**

- Improved fan pattern is second only to a spray gun
- Matches OEM finishes
- Quick drying for increased production
- Shop floor compliant (NESHAP 6H)
- Save time & material
- Reduces repair time & steps to maximize shop efficiency
- Quick drying for increased production
- Shop floor compliant (NESHAP 6H)



PART#	FINISH
40903	Gloss
40913	Semi-Gloss
40923	Matte

**FACTORY PACK™**

Unique, time saving basecoat for jambs, cut-ins, small accessories & touch ups.

**16 oz. Aerosol**

- 24 crossovers from 18 car manufacturers
- Saves hours per job
- Lowers material cost
- Reduces booth bottlenecks
- Exceptional adhesion, flexibility & hiding
- Shop floor compliant (NESHAP-6H)
- Should be clear coated



PART#	COLOR
19013	Silver Frost
19023	Oxford White
19033	Dk Shadow Grey
19043	Redfire Pearl
19053	Torreador Red Met
19063	Pueblo Gold
19073	Vermillion
19083	Dk Blue Pearl
19093	Silver Met
19133	Atomic Blue
19143	Black Pearl
19163	Alabaster Silver
19173	Desert Mist Met
19183	Royal Blue Pearl
19193	Polished Gray Met
19203	Milano Red
19223	Taffeta White
19253	Millenium Silver
19263	Lunar Mist Met
19273	Phantom Gray
19283	Super White II
19303	Titanium
19313	Desert Sand Pearl
19353	Red Pearl
19363	Magnetic Gray Pearl
19373	White
19393	Victory Red
19403	Olympic White
19423	Black
19433	Lt Tarnished Silver
19443	Galaxy Silver Met
19463	Dk Blue Met
19473	Pewter Met
19483	Gold Mist Met
19493	Tuxedo Black
19503	Classic Silver Met
19513	Granite Crystal Met
19523	Blue Crush Met
19533	Dk Amber Pearl
19543	Titanium Silver Met

**CROSSOVER MANUFACTURERS INCLUDE:**  
**Ford, GM, Acura, Honda, Scion, Lexus, Toyota, BMW, Chrysler, Fiat, Mazda, Nissan, Infiniti, Hyundai, Mercedes, VW & Audi.**

All vehicle manufacturer names shown are registered trademarks of their respective holders.

**ADHESION PROMOTERS**

Eliminate costly rework from paint not sticking to plastic or other difficult substrates. Simple to use, SEM adhesion promoters make painting substrates quick & easy.

**XXX  
ADHESION  
PROMOTER**

Increases adhesion of top coat materials to a wide variety of raw plastics.

- OEM recommended
- Exceptional bonding properties
- Topcoat with most refinish products
- Excellent on olefin based plastics
- Easy to apply



PART#	SIZE
77721	Gallon
77723	16 oz. Aerosol
77724	Cone Quart

**SAND FREE ADHESION  
PROMOTER**

A unique wet-on-wet adhesion promoter for ABS, PVC & similar plastics.

- Wet-on-wet application melts color into substrate
- Perfect for interior plastic parts
- Easy to use



PART#	SIZE
38363	16 oz. Aerosol
38364	Cone Quart

**PLASTIC  
ADHESION  
PROMOTER**

Increases adhesion of top coat materials to a wide variety of raw plastics.

- OEM recommended
- Exceptional bonding properties
- Topcoat with most refinish products
- Excellent on olefin based plastics
- Easy to apply
- 3 convenient sizes



PART#	SIZE
39861	Gallon
39863	20 oz. Aerosol
39864	Cone Quart

Refinishing or restoring leather, vinyl & plastic is at the core of SEM. These time-tested permanently flexible & fade resistant coatings continue to lead the automotive, aerospace & marine markets.

PRODUCT	PLASTIC	VINYL	LEATHER	CARPET	VELOUR
<b>Bumper Coater Flexible Coating – Page 20</b>	●			●	●
<b>Classic Coat Flexible Coating – Page 22</b>		●	●		
<b>Color Coat Flexible Coating – Page 22 – 24</b>	●	●		●	●
<b>Sure-Coat Flexible Coating – Page 24 – 25</b>	●	●	●		
<b>Marine Vinyl Coat Flexible Coating– Page 30</b>	●	●			
<b>Marine Engine Paint – Page 30</b>	●				
<b>Aerospace Sure-Coat Flexible Coating – Page 25</b>	●	●	●		
<b>Trim Black – Page 31</b>	●				



## BUMPER COATER FLEXIBLE BLACK

Line of advanced coatings formulated to restore the OEM finish on automotive bumpers & plastic cladding.

- No adhesion promoter required
- No primer required
- Excellent adhesion & durability
- Matches OEM appearance
- Retains flexibility
- Great coverage
- Professional results

PART#	COLOR	SIZE
<b>39101</b>	Black	Gallon
<b>39103</b>	Black	16 oz. Aerosol
<b>39104</b>	Black	Quart



## LOW VOC BUMPER COATER FLEXIBLE BLACK

**2.8 VOC Compliant**  
Black, flexible coating designed for easy reconditioning of most plastic bumpers

- Exceptional adhesion
- OEM matched color & gloss
- Great for flexible or rigid substrates
- Easy to apply
- Excellent hiding

PART#	COLOR	SIZE
<b>39101-LV</b>	Black	Gallon
<b>39104-LV</b>	Black	Quart



## BUMPER COATER AEROSOLS

Line of advanced coatings formulated to restore the OEM finish on automotive bumpers & plastic cladding.

### 16 oz. Aerosol

- No adhesion promoter required
- No primer required
- Excellent adhesion & durability
- Matches OEM appearance
- Retains flexibility
- Great coverage
- Professional results

PART#	COLOR
<b>39073</b>	Gloss Silver
<b>39083</b>	Gloss Black
<b>39103</b>	Flexible Black
<b>39153</b>	Charcoal
<b>39163</b>	Med Smoke
<b>39173</b>	Dk Smoke
<b>39183</b>	Med Gray
<b>39193</b>	Dk Gray
<b>39253</b>	Med Titanium Met
<b>39263</b>	Dk Titanium Met
<b>39273</b>	Charcoal Met
<b>39283</b>	Lt Titanium Met
<b>39293</b>	Honda Black



# Bumper Refinishing

STANDARD OPERATING PROCEDURE

## 1 PREP & PRIME



**i** If damage is present, refer to **Plastic Repair Standard Operating Procedure** first.

Clean with **Scuff & Clean** & a gray scuff pad. Rinse with water & dry with clean, lint-free cloth. Clean with **SEM Solve, Plastic & Leather Prep** or **XXX Universal Surface Cleaner**. Wipe clean in one direction with clean, lint-free cloth.

*Clean & Prep products - See page 2.*

*Primers - See page 14.*

## 2 GUIDE COAT & SAND



Apply **Guide Coat Black** or **Premium Powder Guide Coat** to dried primer. Sand with P320 – P400 grit. Finish sanding with P600 grit.

Blow off & wipe with a tack rag.

**If texture is needed, refer to the Texture Coating Technical Data Sheet available at [semproducts.com](http://semproducts.com).**

*Guide Coat – See page 14.*

## 3 PAINT



Apply **Bumper Coater** aerosol or **Factory Pack** aerosol per instructions.

*Factory Pack – See page 19.*

CHECK LOCAL VOC REGULATIONS TO ENSURE COMPLIANCE OF ALL PRODUCTS IN YOUR AREA. ALWAYS WEAR OSHA REQUIRED (PPE) PERSONAL PROTECTION EQUIPMENT TO ENSURE YOUR SAFETY.





# CLASSIC COAT™ | COLOR COAT™ | SURE-COAT™

OEM TESTED. OEM TRUSTED. OEM RECOMMENDED.



# FLEXIBLE COATINGS

One of the most comprehensive OEM recommended interior refinishing systems available

- Exceptional adhesion
- Stays flexible & will not crack
- Quick drying
- Simple to use



Download the SEM EZ Mix app & access over 5,000 color formulas. [semproducts.com/formulas](http://semproducts.com/formulas)



Refinishing or restoring leather, vinyl & plastic is at the core of *SEM*. These time-tested, permanently flexible & fade resistant coatings continue to lead the automotive, aerospace & marine markets.



### CLASSIC COAT

35 OEM matched aerosols for renewing or restoring leather & vinyl.

#### 16 oz. Aerosol

- OEM recommended
- Excellent for vinyl & leather
- Exceptional adhesion, flexibility & hiding
- Will not crack
- Quick drying
- Simple to use



PART#	COLOR
17013	Midnight Black
17023	Lt Graphite
17033	Lt Parchment
17043	Med Graphite
17053	Med Parchment
17063	Med Prairie Tan
17073	Med Dk Graphite
17083	Dk Graphite
17093	Black
17103	Dk Gray
17113	Graphite
17123	Lt Gray
17133	Lt Neutral
17143	Lt Oak
17163	Med Dk Pewter
17173	Med Gray
17183	Med Neutral
17203	Shale
17213	Very Dk Gray
17223	Very Dk Pewter
17243	Taupe
17263	Classy Gray
17293	Ivory
17313	Tan
17323	Creamy Ivory
17353	Silver Gray
17363	Lt Graystone
17373	Dk Slate Gray
17383	Med Lt Stone
17393	Lt Stone
17403	Camel
17413	Lt Cashmere
17423	Med Cashmere
17433	Very Dk Cashmere
17503	Limo Flat Black

### COLOR COAT

Specialty flexible coating formulated to restore or change the color of most vinyl surfaces, flexible & rigid plastics, carpet & velour. *Color Coat* is not a dye. It is a fade-resistant, flexible & permanent coating.

#### 16 oz. Aerosol

- OEM recommended
- Refinish vehicle interiors & motorcycle seats
- Enhance automotive carpet & velour
- Exceptional adhesion, flexibility & hiding
- Quick drying, will not crack
- Also available in ready to spray quarts & gallons
- Mixing system available for endless colors



PART#	COLOR
13003	High Gloss Clear
13013	Satin Gloss Clear
13023	Low Luster Clear
15003	Phantom White
15013	Landau Black
15023	Cordovan Brown
15033	Saddle Tan
15043	Shadow Blue
15053	Granite
15063	Burgundy
15083	Silver
15093	Lt Buckskin
15103	Super White
15113	Firethorn Red
15123	Santa Fe
15143	Sandstone
15163	Presidio
15173	Camel
15183	Warm Gray
15213	Bluemist
15223	Castella
15233	Gloss Black
15243	Satin Black
15253	Titanium Met
15273	Napa Red
15283	Pescadero Sand
15303	Graphite
15313	White
15323	Palomino
15353	Lt Titanium
15363	Portola Red
15373	Flame Red

### Color Coat 16 oz. Aerosols continued.

PART#	COLOR
15393	Med Gray
15413	Thomas Bus Gray
15453	Gloss White
15483	Bluebird Brown
15603	Sailcloth White
15643	Pacific Blue
15713	Ladera
15723	Monterey
15753	Lt Oak
15763	Storm Gray
15793	Shale
15803	Opel Gray
15813	Med Dk Pewter
15823	Lt Parchment
15833	Khaki
15843	Med Parchment
15853	Ivory
15863	Lt Neutral
15873	Med Slate Gray
15883	Med Neutral
15893	Med Prairie Tan

Aerosols are shop floor compliant (NESHAP 6H)

**For endless colors, see *Color Coat* Mixing System page 24**







# KTL Restorations, Inc. Restores a Rare Mercury Cougar

One of less than 500 still known to exist, this rare 1970 Mercury Cougar Eliminator features interior components refinished with *Color Coat* as well as our **SEM** seam sealers & more.



“ At KTL, we restore vintage cars. We don't just do paint & body work, we are in the business of restoring 50 years of memories.

When we use *SEM* products, we trust the quality & can be confident that those memories will be preserved for another 50 years to come.”

**Kurt & Crystal Lawrance**  
KTL Restorations, Inc.



*KTL Restorations is a full rotisserie restoration shop located in Southern Virginia. They specialize in classic Mercury & Ford restorations.*

## AWARDS

**10/2018 • Las Vegas, NV**

*SEMA Featured BASF Glasurit Vehicle*

**02/2019 • Tulsa, OK**

*Darryl Starbird's Rod & Custom*

- 1st place - Muscle Car
- 1st place - Best Original All Restored
- First All Original Stock Car to receive the Fine Nine award in the show's 55-year history

**03/2019 • Nationwide**

*Hemming Muscle Machines Featured Restoration*

**04/2019 • Nationwide**

*Goodguys Rod & Custom Muscle Car of the Year Finalist*

- Currently running against 11 other vehicles for Muscle Car of the year. Winner to be announced in October 2019.

**06/2019 Lexington, KY**

*Keeneland Concours d'Elegance*

- American Performance Class Winner





## COLOR COAT MIXING SYSTEMS

Specialty flexible coating formulated to restore or change the color of most vinyl surfaces, flexible & rigid plastics, carpet & velour. **Color Coat** is not a dye. It is a fade-resistant, flexible & permanent coating.

- OEM recommended
- Convenient pourable containers
- 9 toners & 3 clears
- Includes intermix labels & sales aids
- Comes with 5 years of color chips



### 27969 Color Coat Gallon Mixing System

For jobber or shop that mixes **Color Coat** flexible coating on a regular basis.

PART#	COLOR
13001	High Gloss Clear*
13011	Satin Gloss Clear*
13021	Low Luster Clear*
15011	Landau Black*
15081	Silver*
15091	Lt Buckskin
15101	Super White
15311	White
15501	Red Oxide*
15511	Fast Yellow*
15521	Fast Red*
15531	Fast Blue*
15541	Tinting White*
15561	Fast Green*
15581	Bright Red
15591	Yellow Oxide*



### 27989 Color Coat Quart Mixing System

For jobber or shop to start mixing **Color Coat** flexible coating.

PART#	COLOR
13006	High Gloss Clear*
13016	Satin Gloss Clear*
13026	Low Luster Clear*
15014	Landau Black*
15084	Silver*
15504	Red Oxide*
15514	Fast Yellow*
15524	Fast Red*
15534	Fast Blue*
15544	Tinting White*
15564	Fast Green*
15594	Yellow Oxide*

For Universal **Color Coat** aerosol blank see page 33

\* This item is part of the mixing system listed above.



### 27979 Color Coat Mixing System

For the jobber, shop or mobile technician.

PART#	COLOR
13006	High Gloss Clear*
13016	Satin Gloss Clear*
13026	Low Luster Clear*
15016	Landau Black*
15086	Silver*
15506	Red Oxide*
15516	Fast Yellow*
15526	Fast Red*
15536	Fast Blue*
15546	Tinting White*
15556	Fast Orange*
15566	Fast Green*
15576	Magenta
15586	Bright Red
15596	Yellow Oxide*

## COLOR COAT FLATTENER

Additive that lowers gloss & adds versatility when custom matching **Color Coat** intermix formulas.

- OEM recommended
- Easily reproduce low gloss OEM appearance
- Increases versatility of **Color Coat**
- Works with all **Color Coat** formulas
- Simple to use



PART#	SIZE
13038	Pint

## TAC FREE

Flexible satin top coat used to eliminate plasticizer migration on coated surfaces.

- Eliminates tackiness on refinished vinyl
- Wet-on-wet application saves time
- Protective coating
- Resistant to alcohol based cleaners



PART#	SIZE
39643	16 oz. Aerosol

## FLEET & FOREIGN COLOR SELECTOR

320 solid & metallic color deck used to select the proper **Sure-Coat** & **Color Coat** color.

PART#	SIZE
70034	Each



Download the **SEM EZ Mix** app & access over 5,000 color formulas.

[semproducts.com/formulas](http://semproducts.com/formulas)

## SURE-COAT MIXING SYSTEM

### VOC Compliant

Waterborne coating system that provides outstanding flexibility & adhesion. For refinishing most leather, vinyl & plastic.

- OEM recommended
- Retains flexibility, will not soften or crack
- Maintains texture of substrate
- 1000's of color formulas, including OEM matched colors
- Easy brush or spray application
- Quick drying

**Sure-Coat Mixing System** includes 9 toners, 3 clears, a **Fleet & Foreign Color Selector**, pint labels & **Dauber Bottles**.



### 16739 Sure-Coat Half Gallon Mixing System

PART#	COLOR
16015	Black*
16085	Silver*
16505	Red Oxide*
16515	Indo Yellow*
16525	Quindo Red*
16535	Thalo Blue*
16545	White*
16565	Thalo Green*
16585	Bright Red
16595	Yellow Oxide*
16705	High Gloss Clear*
16715	Satin Gloss Clear*
16725	Low Luster Clear*



### 16749 Sure-Coat Pint Mixing System

PART#	COLOR
16018	Black*
16088	Silver*
16508	Red Oxide*
16518	Indo Yellow*
16528	Quindo Red*
16538	Thalo Blue*
16548	White*
16568	Thalo Green*
16578	Magenta
16588	Bright Red
16598	Yellow Oxide*
16708	High Gloss Clear*
16718	Satin Gloss Clear*
16728	Low Luster Clear*

**SURE-COAT FLATTENER**

Additive to decrease gloss of *Sure-Coat* colors.

- OEM recommended
- Helps match low gloss OEM colors
- Gives user color versatility
- No change in application

PART#	SIZE
16808	Pint

**SURE-COAT REDUCER**

A blend of water-based solvents to reduce *Sure-Coat* colors when necessary.

- OEM recommended
- Optional reducer helps with specialty application
- Helps with blending
- Maximum 30% reduction

PART#	SIZE
16754	Quart

**SURE-COAT CROSS LINKER**

Additive for *Sure-Coat* colors that increases durability from the effects of most cleaning chemicals.

PART#	SIZE
16004	4 oz.

**SURE-COAT DAUBER BOTTLE**

Spot applicator for *Sure-Coat* colors.

PART#	SIZE
70400	4 oz. Dauber

**SUPER SEM FLEX**

Paint additive that adds flexibility to urethanes, enamels & lacquers. For refinishing flexible substrates such as bumpers, vinyl convertible tops & flexible plastics.

- Use with most paint systems
- Adds chip resistance
- Improves gloss
- Ideal with *Color Coat* colors for vinyl convertible tops

PART#	SIZE
39728	Pint

**POLY BRUSH APPLICATOR**

Foam brush for use with *Sure-Coat* colors.

PART#	SIZE
05500	Each

**LEATHER & VINYL REPAIR COMPOUND**

Filler for flexible interior substrates.

PART#	SIZE
38422	3 oz. Tub

**INTERIOR GRAINING PADS**

Used to duplicate interior grains when using repair compounds.

PART#	SIZE
70022	6 Pack

**AEROSPACE**

Restore aircraft interior leather, vinyl & plastics. *SEM* offers coatings that meet FAA flammability guidelines, allowing you to repair your interior at a fraction of the cost of replacement.

**AEROSPACE SURE-COAT MIXING SYSTEM****VOC Compliant**

Waterborne coating system that provides outstanding flexibility & adhesion. For refinishing most leather, vinyl & plastic.

- Meets FAR's 23.853, 25.853(a) & (c), 27.853 & 29.853
- Can be brushed or sprayed
- Mixing system for endless colors
- Quick drying

*Aerospace Sure-Coat Mixing System* includes 9 toners, 3 clears, an *Aerospace Fleet & Foreign Color Selector*, pint labels & *Dauber Bottles*.

**A16749 Aerospace Sure-Coat Pint Mixing System**

PART#	COLOR
A16018	Black*
A16088	Silver*
A16508	Red Oxide*
A16518	Indo Yellow*
A16528	Quindo Red*
A16538	Thalo Blue*
A16548	White*
A16568	Thalo Green*
A16578	Magenta
A16588	Bright Red
A16598	Yellow Oxide*
A16708	High Gloss Clear*
A16718	Satin Gloss Clear*
A16728	Low Luster Clear*

**A16739 Aerospace Sure-Coat Half Gallon Mixing System**

PART#	COLOR
16018	Black*
16088	Silver*
16508	Red Oxide*
16518	Indo Yellow*
16528	Quindo Red*
16538	Thalo Blue*
16548	White*
16568	Thalo Green*
16578	Magenta
16588	Bright Red
16598	Yellow Oxide*
16708	High Gloss Clear*
16718	Satin Gloss Clear*
16728	Low Luster Clear*

**AEROSPACE SURE-COAT FLATTENER**

Additive to decrease gloss of *Aerospace Sure-Coat* colors.

- Helps match low gloss OEM colors
- Gives user color versatility
- No change in application

PART#	SIZE
A16808	Pint

**AEROSPACE COLOR SELECTOR**

Color deck used to select the proper *Aerospace Sure-Coat* color.

PART#	SIZE
A70034	Each

**AEROSPACE PLASTIC & LEATHER PREP**

Mild solvent blend to properly clean plastic & leather prior to refinishing

- Removes mold release agents, fingerprints & grease
- Promotes adhesion of top coat
- Will not soften or distort plastic parts
- Easy to use

PART#	SIZE
A38353	16 oz. Aerosol

**AEROSPACE SEM SOAP**

Mild abrasive cleaner used as first step in refinishing flexible substrates

- Gravitates into surface & floats contaminants for easy removal
- Mild abrasive helps with adhesion
- Foaming action removes body oils & other water-soluble contaminants

PART#	SIZE
A39362	16 oz. Tube



\* This item is part of the mixing system listed above.

## Plastic Refinishing

STANDARD OPERATING PROCEDURE



### 1 CLEAN

Clean with **SEM Soap** & a gray scuff pad. Scrub thoroughly, paying close attention to textured or recessed areas. Wipe with a clean, damp, lint-free cloth to remove all residue.



### 2 PREP

Apply **Plastic & Leather Prep**, **SEM Solve** or **XXX Universal Surface Cleaner**.

Wipe clean in one direction using a clean, lint-free cloth.

- ❗ **Wiping in one direction** will remove contaminants from the surface rather than smearing contaminants over the surface.
- ❗ If contamination still exists, water will bead on the surface when dry. Repeat steps 1 & 2 until beading no longer occurs.



### 3 DETERMINE THE CORRECT ADHESION PROMOTER

**A** **Sure-Coat** waterborne coating is not compatible with **Sand Free Adhesion Promoter**.

If applying **Sure-Coat** waterborne coating on ABS, do not use an adhesion promoter.

**B** When using **Bumper Coater** flexible coating, an adhesion promoter is not required, with the exception of **Low VOC Bumper Coater** flexible coating.

Place a drop of acetone on the back of the plastic. Rub with your gloved finger.

If the plastic smears & melts, it is ABS. Use **Sand Free Adhesion Promoter**.

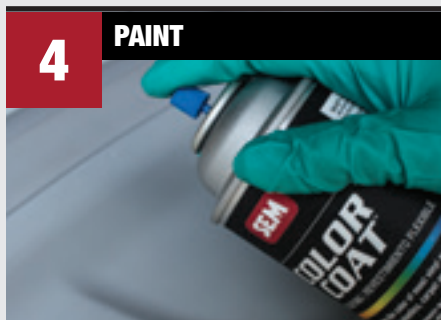
Apply a medium wet coat of **Sand Free Adhesion Promoter**. See note **A**.

While still wet, apply a light coat of **Color Coat**. Avoid applying the first coat too heavily as sagging may occur.

As the **Sand Free Adhesion Promoter** evaporates, **Color Coat** flexible coating is drawn into the surface resulting in excellent adhesion.

If the acetone does not have an effect on the plastic, use **XXX Adhesion Promoter** or **Plastic Adhesion Promoter**. See note **B**.

Apply one medium wet coat of **XXX Adhesion Promoter** or **Plastic Adhesion Promoter**. Allow to flash 3 – 5 minutes before topcoating.



### 4 PAINT

Apply **Bumper Coater** flexible coating, **Color Coat** flexible coating, **Sure-Coat** flexible coating, **Trim Black**, or **Trim Black Ultra** trim paint.

## PRODUCT LIST

### CLEAN & PREP

PART#	PRODUCT	SIZE
38351	Plastic & Leather Prep	Gallon
38353	Plastic & Leather Prep	16 oz. Aerosol
38354	Plastic & Leather Prep	Quart
38371	SEM Solve	Gallon
38373	SEM Solve	20 oz. aerosol
38374	SEM Solve	Quart
39362	SEM Soap	16 oz. Tube
77771	XXX Universal Surface Cleaner	Gallon
77774	XXX Universal Surface Cleaner	Quart

Clean & Prep products - See page 2.

### ADHESION PROMOTERS

PART#	PRODUCT	SIZE
38363	Sand Free Adhesion Promoter	16 oz. Aerosol
38364	Sand Free Adhesion Promoter	Quart
39861	Plastic Adhesion Promoter	Gallon
39863	Plastic Adhesion Promoter	16 oz. Aerosol
39861	Plastic Adhesion Promoter	Quart
77721	XXX Adhesion Promoter	Gallon
77723	XXX Adhesion Promoter	16 oz. Aerosol
77724	XXX Adhesion Promoter	Quart

Adhesion Promoter products - See page 19.

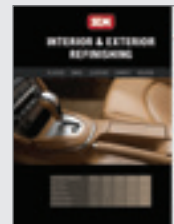
### PAINT

**Bumper Coater** products - See page 20.

**Color Coat** products - See page 22 – 24.

**Sure-Coat** products - See page 24 – 25.

**Trim Black** products - See page 31



Order a copy of the **Interior & Exterior Refinishing** booklet at [semproducts.com](http://semproducts.com)

CHECK LOCAL VOC REGULATIONS TO ENSURE COMPLIANCE OF ALL PRODUCTS IN YOUR AREA. ALWAYS WEAR OSHA REQUIRED (PPE) PERSONAL PROTECTION EQUIPMENT TO ENSURE YOUR SAFETY.



# Leather Refinishing

STANDARD OPERATING PROCEDURE



## 1 CLEAN

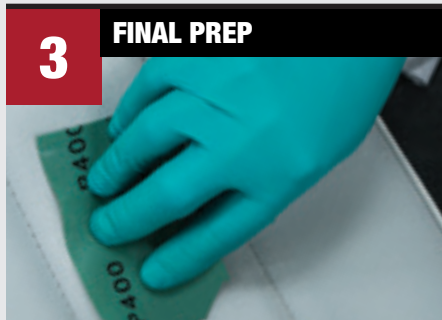
Clean with **SEM Soap** & a gray scuff pad. Scrub thoroughly, paying close attention to textured or recessed areas. Wipe with a clean, damp cloth to remove all residue.



## 2 PREP

Apply **Plastic & Leather Prep** or **XXX Universal Surface Cleaner**. Wipe clean in one direction using a damp, lint-free cloth.

- ❗ Wiping in one direction will remove contaminants from the surface rather than smearing contaminants over the surface.
- ❗ If contamination still exists, water will bead on the surface when dry. Repeat steps 1 & 2 until beading no longer occurs.



## 3 FINAL PREP

Scuff the leather with a clean, gray scuff pad or P400 – P600 grit sandpaper. Blow off dust & clean again with **Plastic & Leather Prep**.



## 4 PAINT

Apply **Sure-Coat** flexible coating or **Classic Coat** flexible coating.

## PRODUCT LIST

### CLEAN & PREP

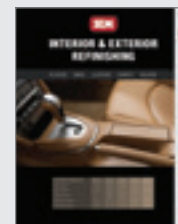
PART#	PRODUCT	SIZE
38351	Plastic & Leather Prep	Gallon
38353	Plastic & Leather Prep	16 oz. Aerosol
38354	Plastic & Leather Prep	Quart
39362	SEM Soap	16 oz. Tube
77771	XXX Universal Surface Cleaner	Gallon
77774	XXX Universal Surface Cleaner	Quart

Clean & Prep products - See page 2.

### PAINT

Classic Coat products - See page 22.

Color Coat products - See page 22 – 24.

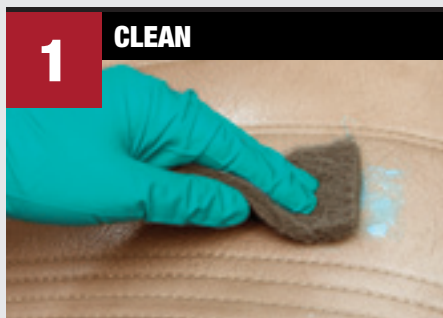


**Order a copy of the Interior & Exterior Refinishing booklet at [semproducts.com](http://semproducts.com)**

CHECK LOCAL VOC REGULATIONS TO ENSURE COMPLIANCE OF ALL PRODUCTS IN YOUR AREA. ALWAYS WEAR OSHA REQUIRED (PPE) PERSONAL PROTECTION EQUIPMENT TO ENSURE YOUR SAFETY.

## Vinyl Refinishing

STANDARD OPERATING PROCEDURE



### 1 CLEAN

Clean with **SEM Soap** & a gray scuff pad.

Scrub thoroughly, paying close attention to textured or recessed areas.

Wipe with a clean, damp, lint-free cloth to remove all residue.



### 2 PREP

Apply **Vinyl Prep** & wipe clean in one direction using a clean, damp, lint-free cloth.

Or, apply **XXX Universal Surface Cleaner** & wipe clean in one direction using a lint-free cloth.

❗ **Wiping in one direction** will remove contaminants from the surface rather than smearing contaminants over the surface.

❗ If contamination still exists, water will bead on the surface when dry. Repeat steps 1 & 2 until beading no longer occurs.



### 3 PAINT

Apply **Color Coat** flexible coating, **Sure-Coat** flexible coating, or **Classic Coat** flexible coating.

❗ When coating vinyl with **Color Coat** flexible coating, plasticizer migration may occasionally occur. When vinyl manufacturers use a high amount of plasticizers, they may bleed & leave a tacky feeling on the coated surface. Apply **Tac Free** over the affected area to eliminate this problem. Consult local regulations to ensure VOC compliance in your



### ! CONVERTIBLE TOPS

❗ Additional flexibility is required when refinishing vinyl convertible tops with **Color Coat** toner. Mix 10 parts **Color Coat** toners to 1 part **Super SEM Flex**. Do not use **Color Coat** aerosols.

Do not exceed mixing ratios. Too much **Super SEM Flex** will create a tacky surface that will not dry properly.

## PRODUCT LIST

### CLEAN & PREP

PART#	PRODUCT	SIZE
38343	Vinyl Prep	16 oz. Aerosol
39362	SEM Soap	16 oz. Tube
77771	XXX Universal Surface Cleaner	Gallon
77774	XXX Universal Surface Cleaner	Quart

Clean & Prep products - See page 2.

### PAINT

**Bumper Coater** products - See page 20.

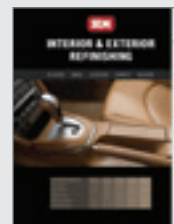
**Classic Coat** products - See page 22.

**Color Coat** products - See page 22 – 24.

**Sure-Coat** products - See page 24 – 25.

**Super SEM Flex** products - See page 25.

**Tac Free** products - See page 24.



**Order a copy of the Interior & Exterior Refinishing booklet at [semproducts.com](http://semproducts.com)**

CHECK LOCAL VOC REGULATIONS TO ENSURE COMPLIANCE OF ALL PRODUCTS IN YOUR AREA. ALWAYS WEAR OSHA REQUIRED (PPE) PERSONAL PROTECTION EQUIPMENT TO ENSURE YOUR SAFETY.

**TEXTURE COATING**

Unique blend of flexible materials for restoring the textured finish on interior & exterior panels prior to painting.

- **OEM recommended**
- Duplicates original textures
- Ready to spray
- Quick drying
- Topcoat with most refinish materials



PART#	SIZE
<b>39853</b>	20 oz. Aerosol
<b>39854</b>	Quart



**WATCH THE VIDEO:**  
Learn how to duplicate OEM textures

Scan the QR code or go to [semproducts.com/sfcc](http://semproducts.com/sfcc)

# Increase billable hours & get cars to your customer faster

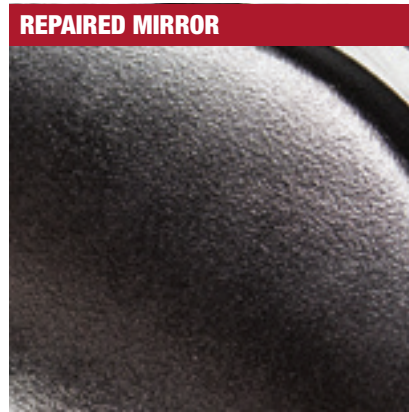
## CASE STUDY: Damaged 2015 Ford F150 mirror housing



**REPLACE MIRROR\***

- **LABOR HOURS: 0.9**
- **MIRROR: \$609.75**
- **KEY TO KEY: 3 DAYS**

Average reported wait time for replacement OE mirror: 2 days



**REPAIR MIRROR**

- **LABOR HOURS: 5.4**
- **MATERIAL: \$2.86 – \$4.99**
- **KEY TO KEY: 1 DAY**

\*Labor, parts & materials taken from actual quotes generated in 2018 on damaged 2015 Ford F150 Platinum SuperCrew 145” – Part Number FL3Z17683PB

# Duplicating OEM Texture

## STANDARD OPERATING PROCEDURE

### 1 PREP

! If damage is present, refer to **Plastic Repair Standard Operating Procedure** prior to refinishing the texture.

Clean with **Scuff & Clean** & a gray scuff pad. Rinse with water & dry with a clean, lint-free cloth.

Clean with **SEM Solve, Plastic & Leather Prep** or **XXX Universal Surface Cleaner**.

Wipe clean in one direction with a clean, lint-free cloth.

! Wiping in one direction will remove contaminants from the surface rather than smearing contaminants over the surface.

### 2 APPLY TEXTURE

Spray **Bumper Coater** flexible coating as a wet bed. While it is still wet, apply **Texture Coating** in light coats 16" – 24" from surface.

- To produce bigger droplets, spray closer to the surface.
- To produce smaller droplets, spray farther from the surface.
- To increase spacing between droplets, spray fast.
- To decrease spacing between droplets, spray slow.

Allow to flash for 10 minutes.

! If needed, apply additional coats in the same manner to achieve OEM texture.

Be sure to apply lightly enough so that raised texture droplets don't flow together.

- To produce grainy texture, no adjustment is needed.
- To produce round texture, lightly sand by hand with a gray scuff pad or P800 grit sandpaper.
- To produce flat texture, sand with a block or by hand using P400 – P600 grit sandpaper.

Blow off & wipe with a tack rag.

**Texture Coating** must be topcoated.

### 3 APPLY TEXTURE

Apply **Bumper Coater** flexible coating, **Color Coat** flexible coating, **Factory Pack** basecoat or **Trim Black Ultra** trim paint according to instructions.

See *Bumper Refinishing* – page 20

See *Plastic Refinishing* – Page 226

CHECK LOCAL VOC REGULATIONS TO ENSURE COMPLIANCE OF ALL PRODUCTS IN YOUR AREA. ALWAYS WEAR OSHA REQUIRED (PPE) PERSONAL PROTECTION EQUIPMENT TO ENSURE YOUR SAFETY.



Keep your watercraft looking new, season after season, by restoring the original color to your vinyl seats & plastic components. Save hundreds, if not thousands of dollars, over replacement or recovering.

## VINYL COAT

Flexible aerosol coatings to match, restore or change the color of most marine vinyl & plastic surfaces.

**16 oz. Aerosol**

- Covers stains, fading & prepped mildew
- Exceptional adhesion
- Outstanding UV protection
- Stays flexible, will not crack
- Excellent hiding
- Quick drying



PART#	COLOR
M25003	Ultra Purple
M25013	Ultra Turquoise
M25023	Ranger Orchid Green
M25033	Ultra Blue
M25043	Ranger Admiral Blue
M25053	Ranger Black
M25063	Ranger White
M25073	Ranger Off-White
M25083	Carver White
M25093	Sea Ray Mystic White
M25103	Sea Ray Alabaster
M25113	Sea Ray Champagne
M25123	Carver Dade Bisque
M25133	Carver Light Tan
M25143	Chaparral Beige/Platinum
M25153	Stingray Taupe
M25163	Ranger Beige
M25173	Ranger Charcoal
M25183	Ranger Gunmetal Grey
M25193	Light Grey
M25203	Formula Boats Grey
M25213	Carver Coco
M25223	Stingray Yellow
M25233	Formula Boats Red
M25243	Sterling Burgundy

## ENGINE PAINT

Flexible coating formulated to restore the color of plastic marine engine cowlings & other painted metal parts on the stern drive & lower unit.

**16 oz. Aerosol**

- Excellent for fiberglass, plastic and pre-coated metal
- Flexible coating – will not crack
- Exceptional hiding & gloss
- Smooth, consistent finish
- Convenient aerosols
- Quick drying
- Simple to use
- Matches OEM finish
- Excellent corrosion control



PART#	COLOR
M25503	Evinrude White
M25513	Mercury Phantom Black

All boat manufacturer names shown are registered trademarks of their respective holders.



## SEEING IS BELIEVING

Watch the video to see how this old seat was made new using *Vinyl Coat* flexible coating.

[semproducts.com/boatseats](http://semproducts.com/boatseats)



## GRIP-TIDE NON-SKID DECK COATING

2K high quality urethane, grip-enhancing, textured coating that provides a durable, protective finish for boat floors, decks & other marine surfaces.

- Adhesion to most surfaces
- Easy one-step spray or roller application
- Durable coating that maintains flexibility
- 5 popular marine colors
- Chemical & fade resistant

PART#	COLOR	SIZE
M25610	Sail White	GAL KIT
M25615	Sail White	6.25 GAL KIT
M25620	Gull Gray	GAL KIT
M25620	Gull Gray	6.25 GAL KIT
M25630	Mateo Wheat	GAL KIT
M25630	Mateo Wheat	6.25 GAL KIT
M25640	Sportsman Green	GAL KIT
M25640	Sportsman Green	6.25 GAL KIT
M25650	Midnight Black	GAL KIT
M25650	Midnight Black	6.25 GAL KIT

## GRIP-TIDE PRIMER

**2.1 VOC Compliant**

2K primer that provides bare metal adhesion & filling in one product.

- Outstanding adhesion on steel, aluminum & fiberglass
- Excellent corrosion control
- Builds quickly & sands easily
- Excellent color holdout
- Sprayable or rollable



PART#	PRODUCT	SIZE
M25674	Primer	Quart
M25686	Primer Activator	Half Pint

## HEAVY TEXTURE ROLLER

A high quality 9" x 3/8" foam nap roller for easily & consistently applying *GripTide Non-Skid Deck Coating*.

PART#	SIZE
71140	Each

**GRIP-TIDE GAL KIT CONTAINS:** 1 Gallon GripTide Non-Skid Deck Coating, 1 Cone Quart GripTide Catalyst, 1 9" Heavy Texture Roller

**GRIP-TIDE 6.25 GAL KIT CONTAINS:** 5 Gallon GripTide Non-Skid Deck Coating, 5 Cone Quart GripTide Catalyst





SEM Trim Black professionally restores the OEM look of automotive trim components. With several options to match color & gloss, SEM brings high performance flexibility & color stability to each job.

**TRIM BLACK**

Acrylic coating formulated to match the OEM finish on automotive trim components. For use on plastic, steel, aluminum, stainless steel & chrome.

- Excellent adhesion & durability
- No primer required
- Matches OEM appearance
- Retains flexibility
- Great coverage
- Professional results



PART#	SIZE
39141	Gallon
39143	20 oz. Aerosol
39144	Quart

**LOW VOC TRIM BLACK**

**2.8 VOC Compliant**

For use on plastic, aluminum, steel & properly prepped stainless steel.

- Excellent adhesion & durability
- No primer required
- Matches OEM appearance
- Retains flexibility
- Great coverage
- Professional results



PART#	SIZE
39141-LV	Gallon
39144-LV	Quart

**TRIM BLACK ULTRA**

True, jet-black trim paint matches today's trim color & gloss levels. For use on plastic, aluminum, steel & properly prepped stainless steel.

- Exceptional appearance & sprayability
- True, jet-black color
- **OEM recommended**
- Three gloss levels to match a variety of OEM applications
- Sprays smooth for an OEM-like finish
- Ultra transfer efficiency aerosol
- Adhesion to steel, aluminum, TPO & PPO



PART#	FINISH	SIZE
49133	Matte	20 oz. Aerosol
49143	Satin	20 oz. Aerosol
49153	Gloss	20 oz. Aerosol

**TRIM BLACK – GLOSS BLACK**

PART#	SIZE
39063	16 oz. Aerosol
39068	Pint



**TRIM BLACK – CHARCOAL METALLIC**

PART#	SIZE
39033	16 oz. Aerosol



**Intelligent Product Design.**

**Reduce repair time, steps & waste.**

It's the way we work.  
It's the way we think.



**This isn't a  
social call.**

**We're here to  
turn more cars.**

- **Reduce trim out time 85%**
- **Repair bumpers 2x faster**
- **Turn 1 extra car per week with direct to metal & paintable immediately technology**
- **Lower applied material cost**
- **Duplicate difficult OE textures**
- **Add additional revenue streams**



**Seeing is believing.  
Watch the videos & request  
a consultation to learn more.**

[semproducts.com/mso](http://semproducts.com/mso)





Increase throughput with shop floor compliant aerosols. Fill one custom aerosol or hundreds with our quick, clean & easy to use filling equipment & aerosol blanks. Limitless color combinations for solvent & waterborne paint systems increase your revenue.

**CUSTOM FILL AEROSOL BLANK**

Can be filled with a variety of automotive paints using a *Custom Fill* machine. Custom aerosols are compliant for use by professional shops outside the booth & give DIY customers professional results.

- No clean up
- Comfort tip eases finger fatigue
- Shop floor compliant (NESHAP 6H)
- Quick & easy to fill
- Professional spray pattern



PART#	SIZE
61993	16 oz. Aerosol

**CUSTOM FILL+ HIGH BUILD AEROSOL BLANK**

Provides higher film build & quicker coverage for 1K & 2K solvent primers, color & clear.

- *Color Coat* mixed color compatible
- Shop floor compliant (NESHAP 6H)
- Use your preferred primer, basecoat or clear with your activator to ensure proper mix



PART#	SIZE
62013	16 oz. Aerosol

**CUSTOM FILL WATERBORNE AEROSOL BLANK**

Can be filled with *Sure-Coat* mixed color & automotive waterborne basecoat for convenient, high quality repairs.

- No clean up
- Comfort tip eases finger fatigue
- Shop floor compliant (NESHAP 6H)
- Quick & easy to fill
- Professional spray pattern



PART#	SIZE
62003	16 oz. Aerosol

**MULTI-COAT AEROSOL BLANK**

Aerosol blank for enamels, urethanes & other paints.

- Create customer specific aerosols
- Ideal for industrial applications
- Shop floor compliant (NESHAP 6H)
- Use with Fillon\* machines



PART#	SIZE
61003	16 oz. Aerosol

**UNIVERSAL COLOR COAT**

A blank aerosol for filling custom *Color Coat* colors.

- Ideal solvent blend for *Color Coat* color
- Use with Omni\* or Fillon\* machines
- Professional spray pattern



PART#	SIZE
15993	16 oz. Aerosol

**CUSTOM FILL PNEUMATIC MACHINE**

Pneumatic machine for filling custom aerosols.

- No clean up
- Fills solvent & waterborne blanks
- Simple pneumatic operation
- Quickly fill 1 can or many



PART#	DESCRIPTION
70701	Machine
70704	Wall Bracket
70706	Cylinder

**CUSTOM FILL MANUAL MACHINE**

Hand operated machine for filling custom aerosols.

- No clean up
- Fills solvent & waterborne blanks
- Simple crank operation
- Perfect for lower volume filling



PART#	DESCRIPTION
70801	Machine

**CUSTOM FILL MEDIUM FAN TIP**

For use with any *Custom Fill* aerosol can to produce a shorter professional fan spray. May also be used with an array of aerosols.

- Medium fan, high volume



PART#	SIZE
MTIP25	25 Pack

**CUSTOM FILL WIDE FAN TIP**

For use with any *Custom Fill* aerosol can to produce a taller professional fan spray. This tip may also be used with an array of aerosols.

- Wide fan, low volume

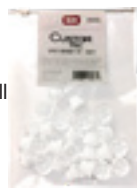


PART#	SIZE
WTIP25	25 Pack

**CUSTOM FILL SPOT REPAIR TIP**

Replaces tips on *Custom Fill* Aerosol Blanks when doing small spot repairs.

- Conical fan pattern for maximum spray control
- Minimal overspray and fine atomization, perfect for spot repair/wheel repair
- Comfort tip eases finger fatigue



PART#	SIZE
STIP25	25 Pack

\*Fillon & Omni are a registered trademark of their respective holders.



Filling an aerosol blank using the *Custom Fill* Pneumatic Machine

**GENERAL PURPOSE AEROSOLS**

**MULTIMAX**

Multi-purpose aerosol enamel for exterior or interior use on metal, wood, fiberglass & rigid plastic.



16 oz. Aerosol

- Durable, fast drying finish
- Great adhesion
- Professional finish

PART#	COLOR
61013	Flat Black
61023	Semi-Gloss Black
61033	Gloss Black
61043	Aluminum
61073	Clear
61083	Red Oxide Primer
61093	Gloss White
61103	Gray Primer
61113	Chassis Gray

**BLENDED SOLVENT**

**BLENZ-IN**

Blending solvent designed to melt the edge of 2K urethane refinish top coats into the existing coating. It allows users to keep repairs to a single panel by creating an invisible blend.



- Saves time & money
- Seamless blends
- Use with most clearcoats

PART#	SIZE
38403	20 oz. Aerosol

**Product Questions?**

Reach out to our Technical Support Team at 1-800-831-1122

Easily mix and fill your preferred primers, basecoats and clears into aerosols on the shop floor. Provides unmatched efficiency for high-volume collision centers.



The **Power Station** system allows users to easily mix & fill their preferred paint products into aerosols directly on the shop floor. No more cleaning spray guns, no more wasted paint products, & no more paint cups; simply mix, fill & spray.

- Reduce labor up to 85% through time savings & less steps
- Eliminate waste from costly cups, gun cleaning & hazardous waste
- Extend pot life of mixed products
- Rationalize SKUs needed for filling
- Free up paint team for larger jobs
- Compliant for shop floor application (NESHAP 6H)
- Compact, mobile design provides easy integration

### POWER STATION SOLVENT BASED

PART#	PRODUCT
<b>70901SB</b>	Solvent Based <i>Power Station</i> system

### POWER STATION WATERBORNE

PART#	PRODUCT
<b>70901WB</b>	Waterborne <i>Power Station</i> system

### INCLUDED IN SOLVENT BASED & WATERBORNE MODELS

PART#	PRODUCT	QTY
<b>70701</b>	<i>Custom Fill</i> Pneumatic Machine	1
<b>70900</b>	<i>Power Station</i> Rack	1
<b>19013</b>	<i>Factory Pack</i> - Silver Frost	1
<b>19023</b>	<i>Factory Pack</i> - Oxford White	1
<b>19033</b>	<i>Factory Pack</i> - Dk Shadow Grey	1
<b>19043</b>	<i>Factory Pack</i> - Redfire Pearl	1
<b>19063</b>	<i>Factory Pack</i> - Pueblo Gold	1
<b>19093</b>	<i>Factory Pack</i> - Silver Metallic	1
<b>19163</b>	<i>Factory Pack</i> - Alabaster Silver	1
<b>19193</b>	<i>Factory Pack</i> - Polished Gray Met	1
<b>19223</b>	<i>Factory Pack</i> - Taffeta White	1
<b>19263</b>	<i>Factory Pack</i> - Lunar Mist Met	1
<b>19283</b>	<i>Factory Pack</i> - Super White II	1
<b>19353</b>	<i>Factory Pack</i> - Red Pearl	1
<b>19363</b>	<i>Factory Pack</i> - Magnetic Gray Pearl	1
<b>19373</b>	<i>Factory Pack</i> - White	1
<b>19393</b>	<i>Factory Pack</i> - Victory Red	1
<b>19403</b>	<i>Factory Pack</i> - Olympic White	1
<b>19423</b>	<i>Factory Pack</i> - Black	1
<b>19443</b>	<i>Factory Pack</i> - Galaxy Silver Met	1
<b>19493</b>	<i>Factory Pack</i> - Tuxedo Black	1
<b>19503</b>	<i>Factory Pack</i> - Classic Silver Met	1
<b>19513</b>	<i>Factory Pack</i> - Granite Crystal Met	1
<b>19523</b>	<i>Factory Pack</i> - Blue Crush Met	1
<b>19533</b>	<i>Factory Pack</i> - Dk Amber Pearl	1
<b>19543</b>	<i>Factory Pack</i> - Titanium Silver Met	1
<b>38253</b>	Premium Powder Guide Coat	1
<b>39103</b>	<i>Bumper Coater</i> - Flexible Black	1
<b>39143</b>	Trim Black	2
<b>39163</b>	<i>Bumper Coater</i> - Med Smoke	1
<b>39683</b>	Self Etching Primer - Gray	2
<b>39793</b>	Heavy Texture Chip Guard	1
<b>39853</b>	Texture Coating	1
<b>40523</b>	Low VOC Rubberized Undercoating	1
<b>40903</b>	1K HS Clear - Gloss	2
<b>40913</b>	1K HS Clear - Semi-Gloss	2
<b>42003</b>	High-Build Primer Surfacer - Black	1
<b>42013</b>	High-Build Primer Surfacer - Gray	1
<b>45504</b>	<i>Rust Trap</i> - Black	1
<b>49143</b>	Trim Black Ultra - Satin	1
<b>62213</b>	<i>Ez Coat</i> - Black	1
<b>62223</b>	<i>Ez Coat</i> - Olive Green	1
<b>62233</b>	<i>Ez Coat</i> - Light Green	1
<b>62243</b>	<i>Ez Coat</i> - Gray	1
<b>62253</b>	<i>Ez Coat</i> - Tan	1
<b>62263</b>	<i>Ez Coat</i> - Olive Brown	1
<b>62273</b>	<i>Ez Coat</i> - White	1
<b>62283</b>	<i>Ez Coat</i> - Field Drab	1
<b>62293</b>	<i>Ez Coat</i> - Dark Green	1
<b>77723</b>	XXX Adhesion Promoter	1
<b>77774</b>	XXX Universal Surface Cleaner	1
<b>MTIP25</b>	<i>Custom Fill</i> Medium Fan Tips	25 Pack
<b>WTIP25</b>	<i>Custom Fill</i> Wide Fan Tips	25 Pack

### INCLUDED IN 70901SB ONLY

PART#	PRODUCT	QTY
<b>61993</b>	<i>Custom Fill</i> Aerosol - Blank	36
<b>62013</b>	<i>Custom Fill++</i> High Build Aerosol Blank	36

### OPTIONAL WITH INITIAL PURCHASE

PART#	PRODUCT
<b>70902S</b>	Solvent Based Refill

### INCLUDED IN 70901WB ONLY

PART#	PRODUCT	QTY
<b>61993</b>	<i>Custom Fill</i> Aerosol - Blank	24
<b>62003</b>	<i>Custom Fill</i> Waterborne Aerosol Blank	24
<b>62013</b>	<i>Custom Fill++</i> High Build Aerosol Blank	24

### OPTIONAL WITH INITIAL PURCHASE

PART#	PRODUCT
<b>70902W</b>	Waterborne Refill



# REDUCE REPAIR TIME, STEPS AND WASTE WITH THE *POWER STATION* SYSTEM

NOW YOU CAN FILL AEROSOL BLANKS WITH YOUR PREFERRED 2K PRIMER, BASECOAT, OR CLEAR AND SPRAY WHILE ON THE SHOP FLOOR

1

Choose the correct **Custom Fill Aerosol Blank** to suit your coating. Mix your preferred 2K coating & activator.



2

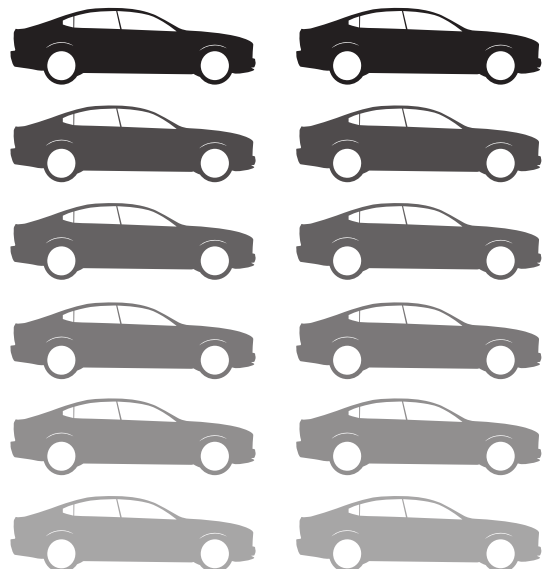
Place the **Custom Fill** cap in the Fill Cylinder & fill your pre-mixed coating for quick & easy refinishing on the shop floor.



\$

**TURN MORE CARS WITH THE *POWER STATION* SYSTEM & *CUSTOM FILL* AEROSOLS**

No spray guns to clean.  
No wasted paint.  
No paint cups.  
**Simply mix, fill & spray.**



LEARN MORE ABOUT *POWER STATION* SYSTEM  
[semproducts.com/power-station](http://semproducts.com/power-station)



Progressive, quality-crafted formulas with a touch of traditional, old-school charm. No matter what challenge lies ahead, Mothers® car care products have a product to get the job done right.

## RUBBING COMPOUND

Quickly removes 1,500 grade & finer sanding scratches, light oxidation, car wash scratches & other defects from paints that do not require sanding.

- Removes 1,500 grit & finer
- Fast cutting action
- Silicone-free
- Recommended for all types of refinish or factory applied automotive paints



PART#	SIZE
<b>08612</b>	12 oz.
<b>81132</b>	32 oz.
<b>81138</b>	Gallon

## HEAVY DUTY RUBBING COMPOUND

Quickly removes 1,200 grade & finer sanding scratches, heavy oxidation, car wash scratches & other defects from paints that do not require sanding.

- Removes 1,200 grit & finer
- Fast cutting action
- Silicone-free
- Recommended for all types of refinish or factory applied automotive paints



PART#	SIZE
<b>81232</b>	32 oz.
<b>81238</b>	Gallon

## MACHINE GLAZE

High-quality polishing glaze that quickly removes compound haze, fine scratches & swirl marks from all types of refinish or factory applied automotive paints.

- Eliminates & removes swirls
- Clarifies, brightens & adds depth
- Silicone-free
- Recommended for all types of refinish or factory applied automotive paints



PART#	SIZE
<b>82332</b>	32 oz.

## FOAM PAD POLISH

Removes compounding swirl marks from all types of refinish or factory applied automotive paints while enhancing color & adding depth.

- Removes compound swirls
- Enhances color & adds depth
- Silicone-free
- Recommended for all types of refinish or factory applied automotive paints



PART#	SIZE
<b>08712</b>	12 oz.
<b>83432</b>	32 oz.
<b>83438</b>	Gallon

## ULTRA FINISHING POLISH

Removes fine machine swirls from all types of refinish or factory applied automotive paint.

- Removes machine swirls
- Maximum shine, clarity & gloss
- Silicone-free
- Recommended for all types of refinish or factory applied automotive paints



PART#	SIZE
<b>83532</b>	32 oz.

## HAND GLAZE

Provides added shine & protection with an easy-to-use formula, safe on all types of paints.

- Adds depth & clarity
- Quick & easy
- Silicone-free
- Professional-grade



PART#	SIZE
<b>84532</b>	32 oz.

## INSTANT DETAILER

Silicone-free, body shop safe, paintable product that provides unparalleled depth, shine, gloss & clarity.

- Body shop safe
- Quick surface cleanups for paint repair evaluations
- Ideal for pre-delivery touch-ups
- Silicone-free



PART#	SIZE
<b>85624</b>	24 oz.
<b>85638</b>	Gallon
<b>85645</b>	5 Gallon

## INSTANT DETAILER SPRAY BOTTLE

PART#	SIZE
<b>85632</b>	32 oz. OSHA Compliant Spray Bottle

## AUTO WASH

Carefully crafted concentration of soaps & detergents for cleaning away grease & grime with ease, without streaking paint or removing existing wax.

- Economical pH balanced shampoo concentrate
- Non-toxic & biodegradable formula
- Cleans & shines
- Professional-grade



PART#	SIZE
<b>80138</b>	Gallon
<b>80145</b>	5 Gallon
<b>80155</b>	55 Gallon

## ALL-PURPOSE CLEANER

Highly concentrated, biodegradable, multi-purpose cleaning solution for carpets, fabrics, vinyl upholstery, engine compartments, fender wells, door jams & more.

- Highly versatile cleaning concentrate
- Interior/exterior safe dilutions
- Non-toxic & biodegradable formula
- Professional-grade



PART#	SIZE
<b>87138</b>	Gallon
<b>87145</b>	5 Gallon
<b>87155</b>	55 Gallon

## ALL-PURPOSE CLEANER SPRAY BOTTLE

PART#	SIZE
<b>87132</b>	32 oz. OSHA Compliant Spray Bottle

## WATER-BASED DEGREASER

Lifts away carbon & baked-on grime from a variety of surfaces with a safe but effective blend of grease-cutting surfactants & biodegradable solvents.

- Highly versatile cleaning concentrate
- Lifts away grease & baked-on grime
- Non-toxic & biodegradable formula
- Water-based



PART#	SIZE
<b>87538</b>	Gallon
<b>87545</b>	5 Gallon
<b>87555</b>	55 Gallon

## WATER-BASED DEGREASER SPRAY BOTTLE

PART#	SIZE
<b>87532</b>	32 oz. OSHA Compliant Spray Bottle

## Product Questions?

Call Technical Support Team at  
1-800-831-1122

## GLASS CLEANER

Cost-effective & versatile cleaning concentrate formulated for all glass & virtually any surface. It dries quickly and leaves behind a sparkling clean, streak-free shine, even in cold weather.

- Highly versatile cleaning concentrate
- Economical & cost-effective
- Streak-free, no haze
- Tint-safe, ammonia-free

PART#	SIZE
87638	Gallon
87645	5 Gallon

## GLASS CLEANER SPRAY BOTTLE

PART#	SIZE
87632	32 oz. OSHA Compliant Spray Bottle



## WHEEL CLEANER

Biodegradable cleaning concentrate for factory/OEM wheels & hubcaps, including painted, clearcoated, color coated & chrome.

- Highly effective cleaning concentrate
- Safe on factory/OEM coated wheels
- Penetrates & removes tough brake dust
- Does not contain hydrofluoric, sulfuric or phosphoric acids, making it safer than conventional acid cleaners

PART#	SIZE
87938	Gallon
87945	5 Gallon
87955	55 Gallon

## WHEEL CLEANER SPRAY BOTTLE

PART#	SIZE
87932	32 oz. OSHA Compliant Spray Bottle



## VINYL & RUBBER DRESSING

Protects vinyl, rubber, plastic surfaces, & engine compartments from the elements & leaves a non-greasy, like-new finish.

- Ready-to-use formula
- Water-based & non-greasy
- Like-new look & feel
- Does not contain soaps, glycerine or other extenders

PART#	SIZE
88138	Gallon
88145	5 Gallon

## VINYL & RUBBER DRESSING SPRAY BOTTLE

PART#	SIZE
88132	32 oz. OSHA Compliant Spray Bottle



## SILICONE-FREE DRESSING

Pre-delivery prep product designed for body shops. This silicone-free, water-based formula is safe for any rubber & trim.

- Ready-to-use formula
- Water-based & body shop safe
- Effective pre-delivery prep
- Silicone-free

PART#	SIZE
88538	Gallon
88545	5 Gallon

## SILICONE-FREE DRESSING SPRAY BOTTLE

PART#	SIZE
88532	32 oz. OSHA Compliant Spray Bottle



## SILICONE-FREE DRESSING CONCENTRATE

Pre-delivery prep product designed for body shops. This silicone-free, water-based formula is safe for any rubber & trim.

- Highly versatile dressing concentrate
- Water-based & body shop safe
- Effective pre-delivery prep
- Silicone-free

PART#	SIZE
88638	Gallon
88645	5 Gallon

## SILICONE-FREE DRESSING CONCENTRATE SPRAY BOTTLE

PART#	SIZE
88632	32 oz. OSHA Compliant Spray Bottle



## DISPENSER BOTTLE

Dispenses the perfect amount of polishes & compounds with ease. Features a self-cleaning pop-top to prevent clogging.

- Rugged polyethylene construction
- Chemical resistant
- Self-cleaning pop-top
- Professional-grade

PART#	SIZE
80000	12 oz. Dispenser Bottle



## METERING UNIT

Most efficient & precise way to ensure that Mothers® product concentrates are being diluted correctly for their specified use.

- Efficient & precise dilution
- Simple push button operation
- Easy-to-install & easy-to-use
- Professional-grade

PART#	SIZE
80006	Metering Unit



## SPIGOT FOR 5 GALLON CONTAINER

Easily dispenses liquids with a simple twist for quick filling of 32 oz. OSHA compliant secondary spray bottles.

- Rugged polyethylene construction
- Chemical resistant
- Easy twist
- Quick & easy fill

PART#	SIZE
80005	Each



Stop oxidation & prevent further damage, convert existing rust or restore OEM corrosion protection. These quality products solve corrosion problems while improving repair process efficiencies.

PRODUCT	CONVERTS RUST	CORROSION PROTECTION	APPLY TO RUST	APPLY TO PREPPED METAL	SUBSTRATE MUST BE TOPCOATED	CAN BE TOPCOATED	SOUND DAMPENING
<b>Rust Mort</b> transformaton coating	●		●		●		
<b>Rust Seal</b> transformaton coating	●	●	●			●	
<b>Rust Trap</b> moisture cure urethane		●	●	●		●	
<b>Rust Shield</b> corrosion coating		●	●	●			
<b>Rust Preventer Cavity Wax</b>		●		●			
<b>Rubberized Undercoating</b>		●		●		●	●
<b>Undercoating</b>		●		●			●

## RUST MORT

Acidic compound that removes or converts rust to an insoluble coating prior to applying body filler, primer or top coat.

- OEM recommended
- Completely removes light rust
- Converts heavy rust into a stable, workable substrate
- Creates ideal surface for filler or primer
- Requires minimal surface preparation
- Brush or submerge



PART#	SIZE
<b>69501</b>	Gallon
<b>69504</b>	Quart
<b>69508</b>	Pint

## RUST SEAL

Dual-purpose acidic compound that neutralizes mild rust & provides a temporary rust-protective layer prior to top coating.

- Neutralizes mild rust
- Leaves a tough protective coating
- May be left exposed temporarily in controlled environments
- Must be topcoated to prevent further oxidation
- Apply with brush or roller
- Can be sanded before application of top coat
- Requires minimal surface preparation



PART#	SIZE
<b>39304</b>	Quart
<b>39308</b>	Pint



## RUST SHIELD

### VOC Compliant

Direct to metal coating that isolates & controls oxidation, rust & corrosion on metal substrates.

- Paint direct to rust or bare sanded steel
- Fast application
- 50 state compliant
- Enhancer available for gloss adjustment
- Can be topcoated for UV resistance
- Restore agricultural, industrial & heavy equipment



PART#	COLOR	SIZE
<b>28061</b>	Gloss Black	Gallon
<b>28064</b>	Gloss Black	Quart
<b>28081</b>	Safety Orange	Gallon
<b>28091</b>	Flat Black	Gallon
<b>28101</b>	Black	Gallon
<b>28104</b>	Black	Quart
<b>28111</b>	White	Gallon
<b>28131</b>	I. H. Red	Gallon
<b>28141</b>	Cat Yellow	Gallon
<b>28151</b>	F.M.F. Gray	Gallon
<b>28161</b>	John Deere Yellow	Gallon
<b>28181</b>	John Deere Green	Gallon
<b>28191</b>	Aluminum	Gallon

## RUST SHIELD HARDENER & GLOSS ENHANCER

A catalyst for use with **Rust Shield** corrosion coating.

- Adds gloss & durability
- Easy 8:1 mixing ratio
- Eliminates recoat headaches
- Aids in curing in cooler conditions

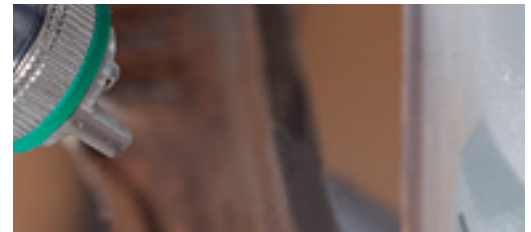
PART#	SIZE
<b>38008</b>	Pint

All equipment manufacturer names shown are registered trademarks of their respective holders.

## APPLICATOR EQUIPMENT

Applicator equipment & spray wands for undercoating, chip guards, bedliners & rust prevention coatings

SEE PAGES 10 – 12



## RUST TRAP

High gloss, moisture-cured urethane coating for restoring & protecting rusty metal.

- Premium moisture-cured urethane technology
- Paint directly to rust or bare sanded steel
- No conversion products needed
- Wet-on-wet application for faster repairs
- 50 state compliant
- Flattener available
- Can be topcoated



PART#	COLOR	SIZE
<b>45501</b>	Black	Gallon
<b>45504</b>	Black	Cone Quart
<b>45508</b>	Black	Pint
<b>45514</b>	Silver	Cone Quart
<b>45518</b>	Silver	Pint
<b>45594</b>	Flattener	Cone Quart
<b>45598</b>	Flattener	Pint

## RUST PREVENTER CAVITY WAX

Semi-transparent black internal panel compound to restore OEM corrosion protection on inner body panels & cavities.

- OEM recommended
- Non-hardening
- Sprayable in 360° pattern with specialized wand (see pg.11)
- Exceptional adhesion
- Excellent corrosion protection
- Wicks into vertical seams



PART#	SIZE
<b>39573</b>	24 oz. Aerosol
<b>39574</b>	Quart



## Rust Preventer Cavity Wax

STANDARD OPERATING PROCEDURE

### RESTORES OEM CORROSION PROTECTION

**Rust Preventer Cavity Wax** is easily applied with a 360° spray pattern when using the **Premium Undercoat Gun & Spray Wand** or the **Rust Preventer Aero Wand**.

- ! Do not spray without tip being inserted into inner panel access point.

#### PREP & APPLY AEROSOL



Clean surface with **SEM Solve** or **XXX Universal Surface Cleaner** where applicable. Remove cap from **Rust Preventer Cavity Wax**, attach straw or **Rust Preventer Aero Wand**. Apply 1 – 2 coats.

- ! Change angle & depth of the tip inside panel to ensure coverage.

#### PREP & APPLY QUART



Clean surface with **SEM Solve** or **XXX Universal Surface Cleaner** where applicable. Shake bottle of **Rust Preventer Cavity Wax** for 1 minute. Spray 1 – 2 coats at 35 – 45 psi.

- ! Change angle & depth of the tip inside panel to ensure coverage.

#### CLEAN WAND



Clean **Rust Preventer Aero Wand** by attaching the tip & wand to **XXX Universal Gun Cleaner**.

Clean **Premium Undercoat Gun & Spray Wand** with **XXX Universal Gun Cleaner**.

CHECK LOCAL VOC REGULATIONS TO ENSURE COMPLIANCE OF ALL PRODUCTS IN YOUR AREA. ALWAYS WEAR OSHA REQUIRED (PPE) PERSONAL PROTECTION EQUIPMENT TO ENSURE YOUR SAFETY.



**SEM** undercoatings eliminate headaches caused by poor performance of low quality products. Our rubberized products offer exceptional color & texture without bleed through. Our asphalt-based products give fantastic coverage & dry times at an economic price.

#### RUBBERIZED UNDERCOATING

Premium, single component, paintable, textured coating for sound dampening, chip resistance, rust protection & corrosion protection.

- **OEM recommended**
- Uniform final appearance
- Quality asphalt-free formula
- Paintable without bleed through
- Sound-dampening properties
- Aerosol includes straw for tight spots
- Fast-drying
- Chip & corrosion resistant



PART#	COLOR	SIZE
39513	White (EU only)	24 oz. Aerosol
39523	Black	24 oz. Aerosol

#### UNDERCOATING

Non-paintable, asphalt-based aerosol coating for corrosion protection, chip resistance & sound dampening on automotive frames, wheel wells & undercarriage areas.

- Uniform appearance
- Excellent adhesion
- Economical



PART#	COLOR	SIZE
39463	Black	24 oz. Aerosol

#### LOW VOC UNDERCOATING

##### VOC Compliant

Asphalt-based, aerosol coating for corrosion protection, chip resistance & sound dampening on frames, wheel wells & undercarriage areas.

- Uniform appearance
- Excellent adhesion
- Economical



PART#	COLOR	SIZE
40463	Black	24 oz. Aerosol

#### LOW VOC RUBBERIZED UNDERCOATING

##### VOC Compliant

Premium, easy to apply, paintable, asphalt-free coating for sound dampening, chip resistance, rust & corrosion protection.

- **OEM recommended**
- Paintable without bleed-through
- Pinhole free
- 100% asphalt free
- Sound-dampening properties
- Chip & corrosion resistant
- Aerosol includes straw for tight spots



PART#	COLOR	SIZE
40523	Black	24 oz. Aerosol



## BUILT BETTER™

#### Every day.

Collision centers, restoration shops & DIYers trust **SEM's** OEM recommended products to reduce repair time, steps & waste in every application.

#### Every day.

We relentlessly pursue excellence. We innovate and we improve.

**We are American manufacturing.**



SEM has a comprehensive line of products for restoring OEM chip resistance and corrosion protection to lower body panels. From fine to heavy textured coatings, SEM has a chip guard that is right for the job.

## PRO-TEX 2K CHIP GUARD

2K, urethane, textured coating for the ultimate protection of lower panels prone to chipping & corrosion.

- OEM recommended
- Tintable & paintable
- Duplicate most OEM textures
- Topcoat with solvent or waterborne systems
- Outstanding protection
- Excellent gloss retention
- No special equipment needed



PART#	SIZE
40820	Kit

KIT CONTAINS: 1 – 40824 Chip Guard Quart  
2 – 40836 Catalyst Half Pint

## HEAVY TEXTURE CHIP GUARD

Aerosol coating that matches medium to coarse OEM textures & protects lower panels from impact, chipping & abrasion.

- Excellent chip & impact protection
- Duplicate a variety of factory textures
- Simple aerosol application
- Medium to coarse texture
- Dries fast



PART#	SIZE
39793	20 oz. Aerosol

## SATIN BLACK CHIP GUARD

Durable, acrylic coating that matches light to medium OEM textures & protects lower panels from impact, chipping & abrasion.

- Duplicate a wide variety of factory textures
- Available in aerosol & ready to spray quarts
- Full texture spectrum from fine to coarse



PART#	SIZE
39813	20 oz. Aerosol
39814	Quart

## 2K URETHANE CHIP GUARD

A job-sized, two-component, shake-and-shoot, textured coating for reproducing a variety of OE textures & chip guards.

- OEM recommended
- Reproduces fine to coarse OE textures
- 50 state compliant
- Non-yellowing & staining
- Tintable, paintable or can be used as a textured top coat
- Chemical resistant
- Excellent for sound dampening
- Job-sized, billable unit
- Use with HVLP/RP gun or 71103 2K Urethane Chip Guard Applicator



PART#	SIZE
52000	Kit

KIT CONTAINS: 1 – 52008 Chip Guard Quart  
1 – 52004 Activator 4 oz.

## 2K URETHANE CHIP GUARD APPLICATOR

Sold separately, see page 11.

## CLEAR CHIP GUARD

Durable, acrylic coating that matches light to medium OEM textures & protects lower panels from impact, chipping & abrasion.

- Protects lower panels from impact, chipping, & abrasion
- Duplicate a wide variety of factory textures
- Available in aerosol & ready to spray quarts
- Full texture spectrum from fine to coarse



PART#	SIZE
39803	20 oz. Aerosol
39804	Cone Quart

## APPLICATOR EQUIPMENT

Applicator equipment & spray wands for undercoating, chip guards, bedliners & rust prevention coatings

SEE PAGES 10 – 12

## 2K Urethane Chip Guard

### APPLICATION INSTRUCTIONS

**IMPORTANT:** Product has a short pot life.

Spray immediately after mixing. If allowing to flash, mix only enough for 1 coat at a time.

### 1 PREP

Clean with **SEM Solve** or **XXX Universal Surface Cleaner**.

Sand with P180 – P220 grit sandpaper.

Prime any bare metal areas & sand the primer with P180 – P220 grit sandpaper.

Blow off dust & tack clean.

### 2 MIXING

**2K Urethane Chip Guard** is a shake-and-shoot system.

Pour entire **2K Urethane Chip Guard Activator** into the **2K Urethane Chip Guard**.

Add 1 oz. solvent-based tint (optional).

Shake bottle for 2 minutes.

Attach **2K Urethane Chip Guard** to the **2K Urethane Chip Guard Applicator**.

If using an HVLP/RP gun, pour into paint cup & attach to gun.

### 3 APPLICATION

Coats: 1 – 4

Flash time between coats: 0 – 20 minutes

**Air Pressure:** 20 – 110 psi when using **2K Urethane Chip Guard Applicator**

**Air Pressure:** 3 – 30 psi when using HVLP/RP gun

**Top coat time:** 20 minutes – 4 hours with waterborne or solvent-based paint

**NOTE:** If topcoating after 4 hours, **2K Urethane Chip Guard** must be scuffed.

Follow top coat manufacturer's instructions for proper procedure.

Use **2K Urethane Chip Guard** to easily reproduce a variety of OE textures found on newer model vehicles.

CHECK LOCAL VOC REGULATIONS TO ENSURE COMPLIANCE OF ALL PRODUCTS IN YOUR AREA. ALWAYS WEAR OSHA REQUIRED (PPE) PERSONAL PROTECTION EQUIPMENT TO ENSURE YOUR SAFETY.







# 2K URETHANE CHIP GUARD

Two-component, urethane, texture coating for reproducing a variety of OE textures & chip guards

## SHAKE. SHOOT. DONE.

When using 2K Urethane Chip Guard, numerous textures can be achieved with different techniques.

The chart below ranks 16 textures by coarseness (grain of texture) & film build (thickness of material on panel).



Access the **Technical Data Sheet** with detailed instructions for reproducing these 16 different textures at [semproducts.com](http://semproducts.com).





# ROCK-IT X<sup>C</sup>

X<sup>TREME</sup> COATING



**Kits Include FREE Applicator Gun**

# More than a Truckbed Liner

It's a rock-hard, protective, 2K urethane Xtreme Coating for truckbeds, recreational vehicles, industrial equipment, restoration & more



Truckbeds



Off-Road Vehicles



Trailers



Equipment



Industrial



Marine



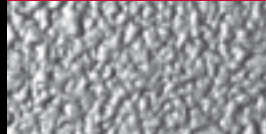
ATVs



Golf Carts

## SMOOTH TEXTURES

### HEAVY SMOOTH TEXTURE



### MEDIUM SMOOTH TEXTURE

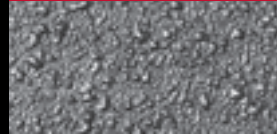


### LIGHT SMOOTH TEXTURE

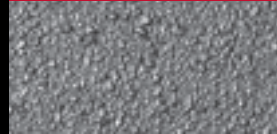


## COARSE TEXTURES

### HEAVY COARSE TEXTURE



### MEDIUM COARSE TEXTURE



### MEDIUM-LIGHT COARSE TEXTURE



### LIGHT COARSE TEXTURE



**Technical Data Sheet** includes detailed instructions for these 7 texture options.

SEM offers three sprayable urethane truckbed liners with various advantages in protection and cosmetic appearance. SEM truckbed liners will not chalk, fade or peel after proper application.



**ROCK-IT XC**

High quality, urethane, textured coating that provides a durable, chemical & fade resistant, protective finish for truckbeds, recreational vehicles, industrial equipment & restoration.

- Exceptional durability, gloss, & texture
- Free applicator in every kit
- Excellent fade resistance & UV stability
- 50 state compliant
- T<sup>3</sup> True Tint Technology™ – non-yellowing formula
- Produces a variety of textures with **Economy Coating Gun**, HVLP gun, roller or brush
- Resistant to a variety of strong chemicals
- Durable coating that maintains flexibility
- Excellent for sound dampening
- Outstanding adhesion to most surfaces

PART#	PRODUCT	SIZE
46650	Rock-It XC - Black	Kit
46670	Rock-It XC - Tintable	Kit

KIT CONTAINS: 4 sprayable quarts, including catalyst. Technical Data Sheet with detailed instructions for 7 texture options, 1 Mixing Cup & 1 **Economy Coating Gun**

**SOLD SEPARATELY**

PART#	PRODUCT	SIZE
46644	Rock-It XC Catalyst	Quart
46646	Rock-It XC Catalyst	Half Pint
46654	Rock-It XC - Black	Quart
46655	Rock-It XC - Black	5 Gallon
4665-DR	Rock-It XC - Black	54 Gallon
46674	Rock-It XC - Tintable	Quart
46675	Rock-It XC - Tintable	5 Gallon
4667-DR	Rock-It XC - Tintable	54 Gallon



**PRO-TEX TRUCKBED LINER**

Professional, two-component, urethane liner system that provides a hard, durable finish & exceptional protection to truckbeds & equipment.

- **Lifetime Warranty\***
- Tough, durable & non-corrosive
- Air & water tight
- Tintable version to match OEM colors
- Outstanding chemical resistance
- Bonds to most surfaces
- Resists fading
- Excellent sound dampening
- No maintenance

PART#	PRODUCT	SIZE
40640	Black	Kit
40660	Tintable	Kit

KIT CONTAINS: 1 gallon Truckbed Liner, 2 quarts Catalyst, 2 Plastic Schutz Bottles & 2 Mixing Cups

**SOLD SEPARATELY**

PART#	PRODUCT	SIZE
40645	Black	5 Gallon
4064-DR	Black	54 Gallon
40671	Catalyst	Gallon
40665	Tintable	5 Gallon
4066-DR	Tintable	54 Gallon

**PLASTIC SCHUTZ BOTTLE**

Black HDPE plastic bottle for applying undercoatings & liner systems.

PART#	SIZE
71004	Each



**PROFESSIONAL TRUCKBED LINER**

Two-component, urethane, textured coating that provides exceptional adhesion, film build & flexibility to truckbeds & restoration projects.

- Durable, slip resistant, non-corrosive coating
- Outstanding adhesion & chemical resistance
- Will not fade
- Bonds to most surfaces
- Tintable version to match OEM colors
- Sound dampening properties
- Air & water tight

PART#	PRODUCT	SIZE
39630	Black	Kit
39650	Tintable	Kit

KIT CONTAINS: 1 gallon Truckbed Liner, 1 quart Catalyst, 2 Plastic Schutz Bottles & 1 Mixing Cup

**PRO-TEX EXTENDER**

Additive to lengthen the pot life of Pro-Tex Truckbed Liner & Pro-Tex 2K Chip Guard kit.

- Extends pot life
- Excellent for hot & humid conditions

PART#	SIZE
40688	Pint



**APPLICATOR EQUIPMENT**

Applicator equipment & spray wands for undercoating, chip guards, bedliners & rust prevention coatings

**SEE PAGES 10 – 12**

“ I really like the new Rock-It XC liner for a few reasons. Easy to spray, the kits come complete with everything you need for application & the ability to match or create lots of different textures. We’ve abused the heck out of this stuff in a truck used for hunting. And, after a normal wash, it looks just as good as the day I sprayed it. ”

**Jeremy Winters**  
 Host of BoothTalk  
 @thatPainter\_fella  
 Painter  
 Butler Collision  
 Macon, GA



\*Visit semproducts.com/warranty for complete Pro-Tex Lifetime Warranty information.





Width: 25" | Height: 30" | Depth: 13"

## Need to find a distributor?

Visit [semproducts.com](http://semproducts.com) to locate your nearest distributor of SEM automotive, marine and custom interior coatings.



### SHOP CABINET

Comprehensive system of 23 products a technician needs every day for panel bonding, plastic repair, seam sealing, sound dampening & corrosion protection. The product assortment is delivered with a locking, steel-welded cabinet for added protection & organization.

- Over \$350 in savings
- 23 product assortment of SEM's most popular collision center products
- Includes two-component 71119 Universal Manual Applicator
- Durable, steel-welded construction
- All included Dual-Mix products are OEM recommended & forever warrantied

**Now Included: DMAB Dual-Mix Application Board**

**PART#**  
**70080** 1 Cabinet

### Dual-Mix Forever Warranty

When used according to product instructions. SEM guarantees to the purchaser that all Dual-Mix products will perform to specifications for the life of the vehicle. This warranty covers reasonable costs for labor, loss of use of the vehicle, parts & materials only, & excludes consequential or incidental damages. When applicable, OEM repair procedures must be followed.



### PRODUCTS INCLUDE:

Part#	Product
38373	SEM Solve
38398	Scuff & Clean
39377	Dual-Mix Seam Sealer – Gray ★
39573	Rust Preventer Cavity Wax ★
39599	Metal Bite Finishing Glaze
39683	Self Etching Primer – Gray
39747	Dual-Mix Multi-Purpose Panel Adhesive ★
39777	Dual-Mix High-Build Self Leveling Seam Sealer ★
39847	Dual-Mix Multi-Plastic Repair Material ★
39977	Dual-Mix Panel Vibration Control Material ★
40477	Dual-Mix Heavy Bodied Seam Sealer - White ★
40489	Bumper Bite Flexible Glaze
40507	Dual-Mix Quick Set 50 – Black ★
40523	Low VOC Rubberized Undercoating ★
40773	Zincweld ★
42013	High-Build Primer Surfacer – Gray
62223	Ez Coat – Olive Green ★
70007	Plastic Repair Contouring Tape
70070	Versa-Tip (6 Pack)
71119	Universal Manual Applicator
71120	Rust Preventer Aero Wand
77723	XXX Adhesion Promoter
77763	XXX Universal Gun Cleaner

★ OEM Recommended



SEM assortments offer selections of our most popular products. They act as silent salesmen and promote SEM's commitment to quality while improving store appearance.



**REFINISHING CENTER**

A jobber's best selling, lowest paid salesperson. Attract more customers & generate additional revenue with SEM's Refinishing Center of professional aerosols.

<b>PART#</b>	
<b>40032</b>	1 Rack



**CLASSIC RACK ASSORTMENT**

Assortment of all *Classic Coat* colors & necessary prep materials.

<b>PART#</b>	
<b>17002</b>	1 Rack



**MARINE RACK ASSORTMENT**

Assortment of *Vinyl Coat* aerosols & other SEM Marine prep products.

<b>PART#</b>	
<b>M25992</b>	1 Rack

**MARINE VINYL COAT 12 CAN ASSORTMENT**

Assortment of the top selling Marine *Vinyl Coat* aerosols

<b>PART#</b>	
<b>M25889</b>	12 Can Assortment

**MARINE VINYL COAT 30 CAN ASSORTMENT**

Contains 2 each of our most popular *Vinyl Coat* colors & 1 each of the other 20 colors

<b>PART#</b>	
<b>M25779</b>	30 Can Assortment

**Product Questions?**

Reach out to our Technical Support Team at 1-800-831-1122



# In-depth training to get it done right



## SEM Shop Clinics

Available For Qualified Collision Centers

We'll come to you to demo products, train, provide SOPs, & answer any questions.

These shop clinic sessions can be tailored to your needs & anyone is welcome to attend.

- Repair bumpers 2x faster
- Reduce trim out time 85%
- Turn 1 extra car per week with direct to metal & paintable immediately products

## I-CAR Training

SEM is a proud member of the I-CAR Sustaining Partners™ Program.

SEM I-CAR classes include:

- Adhesive, rivet & weld bonding
- Automotive corrosion protection
- Automotive foams & sound dampening
- Plastic bumper repair & refinishing

Contact your local SEM rep for more information about training opportunities.



Built Better, Bumper Coater, Bumper Bite, Carbo Fill+, Classic Coat, Color Coat, Custom Fill, Dual-Mix, Ez Coat, Factory Pack, GripTide, Vinyl Coat, Mini-Max, Metal Bite, Metallock, Multi-Coat, MultiMax, ORBIT, Power Station, Pro-TEX, Rock-It XC, Rust Mort, Rust Seal, Rust Shield, Rust Trap, SEM, Sure-Coat and Zincweld are trademarks of SEM Products, Inc. • Metton is a registered trademark of Metton America, Inc. • Mothers is a registered trademark of Mothers Polishes Waxes Cleaners Corporation. • I-CAR and Industry Training Alliance are registered trademarks of Inter-Industry Conference on Auto Collision Repair Corporation.

© 2019 PPG Industries, Inc. All Rights Reserved.



TECH SUPPORT  
CUSTOMER CARE

1-800-831-1122  
1-866-327-7829



tech@semproducts.com  
custcare@semproducts.com

