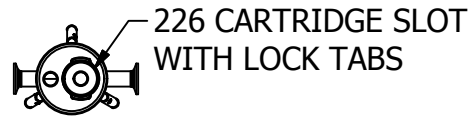


THIS DOCUMENT IS FOR REFERENCE ONLY AND IS PROPRIETARY INFORMATION BELONGING TO INTERNATIONAL FILTER PRODUCTS UNAUTHORIZED COPIES OR USE FOR OTHER PURPOSES STRICTLY PROHIBITED.

| REVISIONS | | | | |
|-----------|-----|--------------------|------------|----------|
| ZONE | REV | DESCRIPTION | DATE | APPROVED |
| | - | Production Release | 12/20/2018 | YA Zanki |

D

D



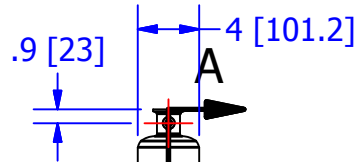
INTERNAL VIEW

1.5" TC GAUGE PORT
1/4" BARB VENT VALVE

45 [1134]

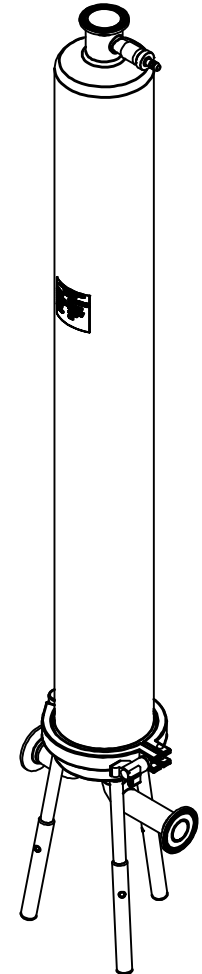
1" TC INLET PORT
1" TC OUTLET PORT

8 [205]



34.8 [883]

SECTION A-A



C

B

NOTES:

- 1.0 DESIGN PRESSURE 125 PSI [8.5 BAR] @ 212 °F [100 °C]
- 2.0 FINISH INTERNAL: 11 RA; EXTERNAL 25 RA
- 3.0 UNIT IS DESIGNED TO ACCEPT FILTER CARTRIDGE:
(1) 2.75 DIA., 30" LONG 226 O-RING FILTER CARTRIDGE W/FIN
- 4.0 FILTER HOUSING IS DESIGNED AND BUILT PER ASME 2010 DIVISION I SECTION VIII
- 5.0 SEAL MATERIAL: SILICONE

| | | | |
|--|---|---------------------------------|------------------------------------|
| DRAWN YA Zanki 12/4/2018 CHECKED A. AZIZ 12/20/2018 APPROVED CD Morland 12/20/2018 | International Filter Products 7914 Ajay Dr. Sun Valley, CA 91352 PHONE: 818-504-8115 FAX: 818-841-2947 email: www.internationalfilterproducts.com | TITLE HOUSING, 30 INCH, SSSH | |
| UNLESS OTHERWISE SPECIFIED DIMENSIONS ARE IN INCHES DECIMALS FRACTIONS +/- 1/16 X +/- .030 ANGLES +/- 1/2 XX +/- .015 SURFACE ROUGHNESS 125 XXX +/- .005 CONCENTRICITIES .010 (FIM) INTERNAL RADII .015~.030 BREAK CORNERS .005~.015 | SIZE A | ISOF NO NA | DWG NO 01-0210-3-1-226-1 |
| SCALE NA | WEIGHT N/A | SHEET 1 OF 2 | REV - |

4

3

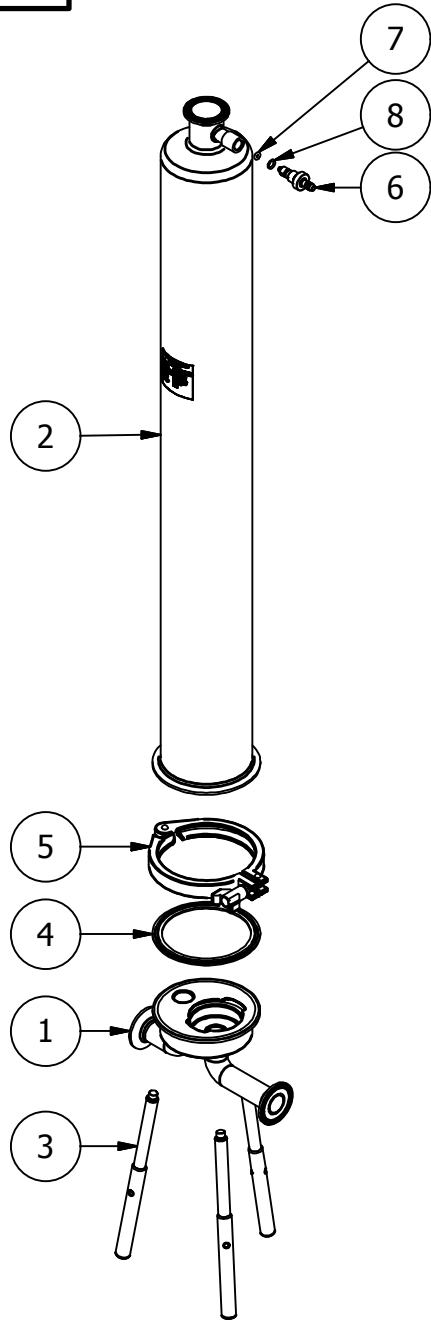
2

1

A

A

THIS DOCUMENT IS FOR REFERENCE ONLY AND IS PROPRIETARY INFORMATION BELONGING TO INTERNATIONAL FILTER PRODUCTS UNAUTHORIZED COPIES OR USE FOR OTHER PURPOSES STRICTLY PROHIBITED.



| STANDARD SEAL KITS | |
|--------------------|----------------------------|
| PART NUMBER | DESCRIPTION |
| IFP-091-0001 | SEALS, SSSH, SILICONE, KIT |
| IFP-091-0002 | SEALS, SSSH, EPDM, KIT |
| IFP-091-0003 | SEALS, SSSH, BUNA, KIT |
| IFP-091-0004 | SEALS, SSSH, PTFE, KIT |
| IFP-091-0005 | SEALS, SSSH, VITON, KIT |

| 8 | IFP-09T-0002 | SEAL, O-RING, 011, SILICONE | 1 |
|------|--------------|-------------------------------------|-----|
| 7 | IFP-09T-0001 | SEAL, O-RING, 105, SILICONE | 1 |
| 6 | IFP-03D-0001 | VALVE, VENT, 0.25 INCH, 316LSS | 1 |
| 5 | IFP-10E-0005 | CLAMP, TC, 4.0 INCH | 1 |
| 4 | IFP-09T-0106 | SEAL, TC, 4.0 INCH, SILICONE | 1 |
| 3 | IFP-02D-0201 | HOUSING, LEG, SSSH, T-TYPE | 3 |
| 2 | IFP-02D-0204 | HOUSING, 30L DOME, SSSH, T-TYPE.ipt | 1 |
| 1 | IFP-02D-0200 | HOUSING, BASE, SSSH, T-TYPE | 1 |
| ITEM | PART NUMBER | DESCRIPTION | QTY |

| BILL OF MATERIALS | | | |
|--|--|---|-------------------|
| DRAWN YA Zanki | | 12/4/2018 | |
| CHECKED A. AZIZ | | 12/20/2018 | |
| APPROVED CD Morland | | 12/20/2018 | |
| UNLESS OTHERWISE SPECIFIED DIMENSIONS ARE IN INCHES | | International Filter Products 7914 Ajay Dr. PHONE: 818-504-8115 Sun Valley, CA 91352 FAX: 818-841-2947 email: www.internationalfilterproducts.com | |
| DECIMALS FRACTIONS +/- 1/16 | | TITLE | |
| X +/- .030 ANGLES +/- 1/2 | | HOUSING, 30 INCH, SSSH | |
| XX +/- .015 SURFACE ROUGHNESS 125 | | SIZE | DWG NO |
| XXX +/- .005 | | A | 01-0210-3-1-226-1 |
| CONCENTRICITIES .010 (FIM) | | SCALE | REV |
| INTERNAL RADII .015~.030 | | NA | - |
| BREAK CORNERS .005~.015 | | WEIGHT | SHEET 2 OF 2 |
| | | N/A | |