



Welcome



Creating Art for Screen Printed Transfers



Presented by:

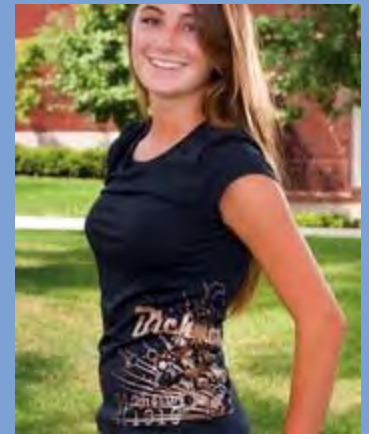
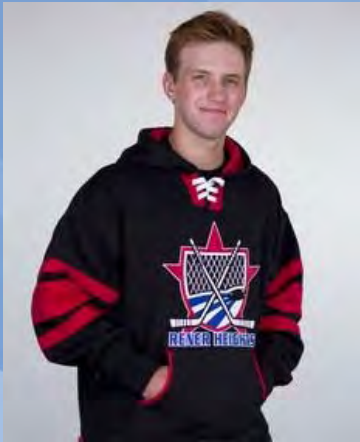


STAHL'S
TRANSFER EXPRESS



What Is a Screen Printed Transfer?

Plastisol ink printed onto a release paper that will need to be applied with a heat press



What Art Program Should I Use?

We recommend:
CorelDraw® or Illustrator®

We Accept:



Create Vector Artwork

- Vector art is created with lines, curves and shapes.
- Vector art can be resized with no loss in quality
- Vector art does not have pixels



Vector Art



Raster Art



Convert Your Text To Curves



Live Text



Curves/Outlines



Our computer without the
font and not converted to curves

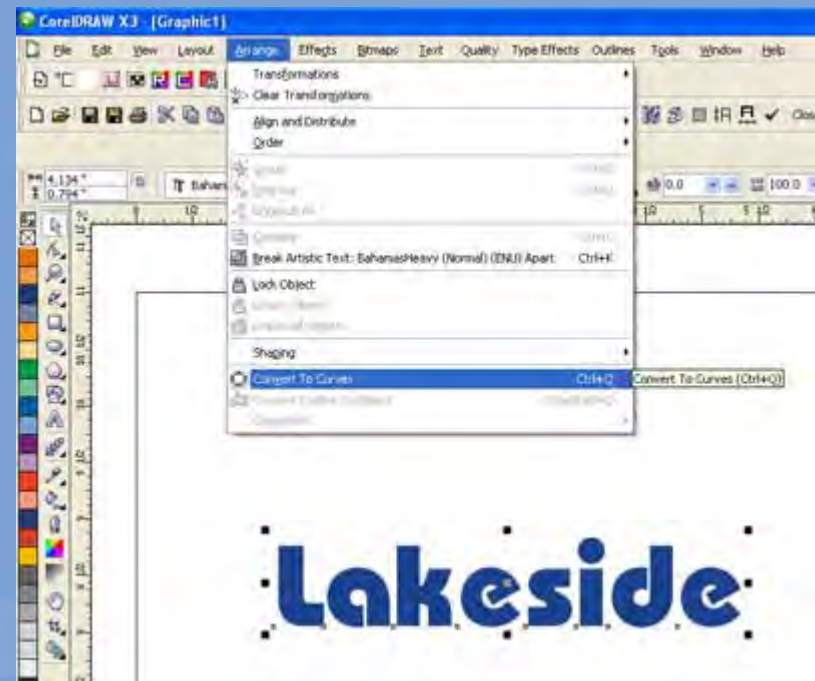


Convert Your Text To Curves

- This creates a file so the text is no longer text but rather a shape
- This maintains the integrity of the font you used

How To Convert to Curves in Corel®:

1. Select Your Text
2. Click the Arrange Menu
3. Choose Convert to Curves



Convert Your Text To Curves

In Adobe Illustrator® this is called Create Outlines

How To Convert to Curves in Illustrator:

1. Select Your Text
2. Click the Type Menu
3. Choose Create Outlines



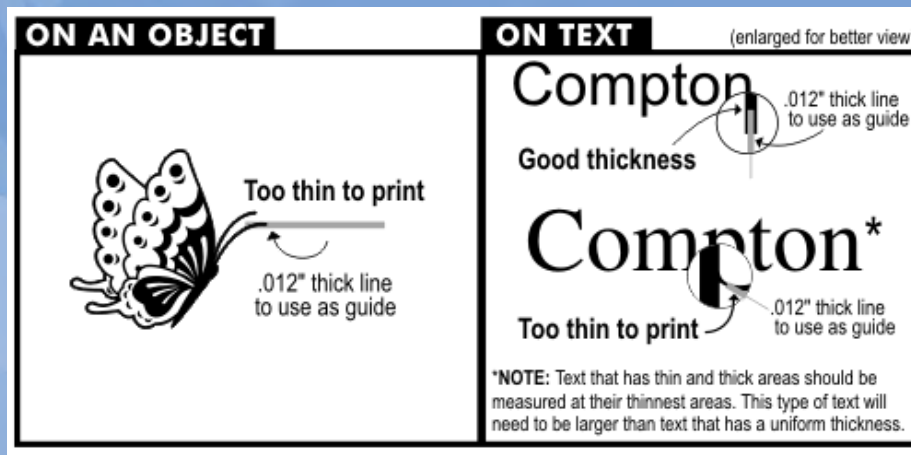
Line Thickness

.012" or .864 points

Line Thickness

To test the line thickness in your artwork files:

1. Create a straight line in your file and make it a different color than your artwork.
2. Set the thickness of the line to .012" or .864 points.
3. Now move the line around, setting it over top of any artwork that may have thin areas of color. All of your artwork should be at least as thick as that line whether it be text, outlines or objects.
4. Delete the line when you have finished checking your file.



Any portion of artwork that is less than the recommended thickness is not guaranteed to be printed.

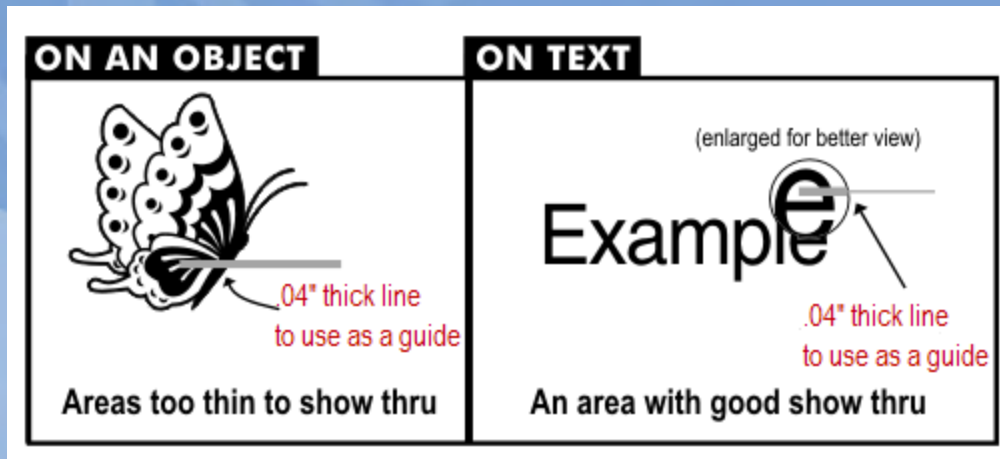


Show Through Area

.04" or 2.88 points

To test the open areas in your artwork files:

1. Create a straight line in your file and make it a different color than your artwork.
2. Set the thickness of the line to .04" or 2.88 points.
3. Now move the line around, setting it over top of any artwork that may have thin areas of color. All of your artwork should be at least as thick as that line whether it be text, outlines or objects.
4. Delete the line when you have finished checking your file.



Show-thru thickness is important so the artwork will not close up once it is printed and applied to the garment. This applies to any non-printing area including the open spaces within text.



Colors



- Can be any color
- Be consistent
- Let us know what ink colors will be used where
(Example what is white will be printed in black Ink)
- We stock 75 colors including glitter and pearl!
- Specify what colors will be used-our stock or color match



Gang Sheets



Create Your Own Gang Sheet

Gang sheets are a fast and easy way to save money when buying screen printed transfers. If your custom image is small enough for gang sheets, send us your artwork and we will certainly make the gang sheet for you. However, if you would like to make your own gang sheet, here are a few tips on how to make the most of the “real estate” on each sheet.

All images on the sheet can be as close as you want. However, keep in mind that you have to cut apart your images. Don't put them so close together that you are wasting time cutting out tightly close images. We recommend leaving a ½” spacing between all images that you will be cutting apart.

The images don't all have to be facing one direction. Rotate them based on their shape to fit as many as you can onto one sheet.

Add as many different images as you would like to a gang sheet. They do not all have to be the same image.



What We Will Need To Know



1. What TYPE OF GARMENT or accessory do they want to put it on?
2. What COLOR GARMENT will it be going on?
3. How many COLORS is it?
4. How MANY do you need?



Sending Us the Art

The screenshot shows the STAHL'S TRANSFER EXPRESS website. The header includes the company logo, a search bar, and navigation links for 'LOG IN', 'MY ACCOUNT', and 'CART'. A navigation menu below the header lists categories like 'VIEW LAYOUTS & CLIP ART', 'HEAT APPLIED TRANSFERS', 'NAME & NUMBER TRANSFERS', 'BANNERS, DECALS & MORE', 'HEAT PRESSES', 'MARKETING TOOLS', 'ORDERING & PRICING', and 'HELP & EDUCATION'. The main content area features a 'TRANSFER EXTREME®' promotion for 'Stock Halloween Heat Transfers'. The central image shows a person wearing a black t-shirt with a graphic of a man's face. To the right of the main image are three buttons: 'SEND US YOUR ARTWORK', 'VIEW LAYOUTS', and 'VIEW CLIP ART'. A 'Learn More' button is also present. At the bottom of the main image area, there are five small numbered tabs (1-5).

STAHL'S
TRANSFER EXPRESS.
The Custom Transfer Source

Site SEARCH

LOG IN MY ACCOUNT 0 CART

Plus Orders Order within: 1 Hrs 45 Min Ships By: 9/30 800.622.2280

VIEW LAYOUTS & CLIP ART HEAT APPLIED TRANSFERS NAME & NUMBER TRANSFERS BANNERS, DECALS & MORE HEAT PRESSES MARKETING TOOLS ORDERING & PRICING HELP & EDUCATION

TRANSFER EXTREME® [Learn More](#)
Stock Halloween Heat Transfers

TRICK OR TREAT!
Full color screen printed transfers for Halloween
[Order Now](#)

SEND US YOUR ARTWORK

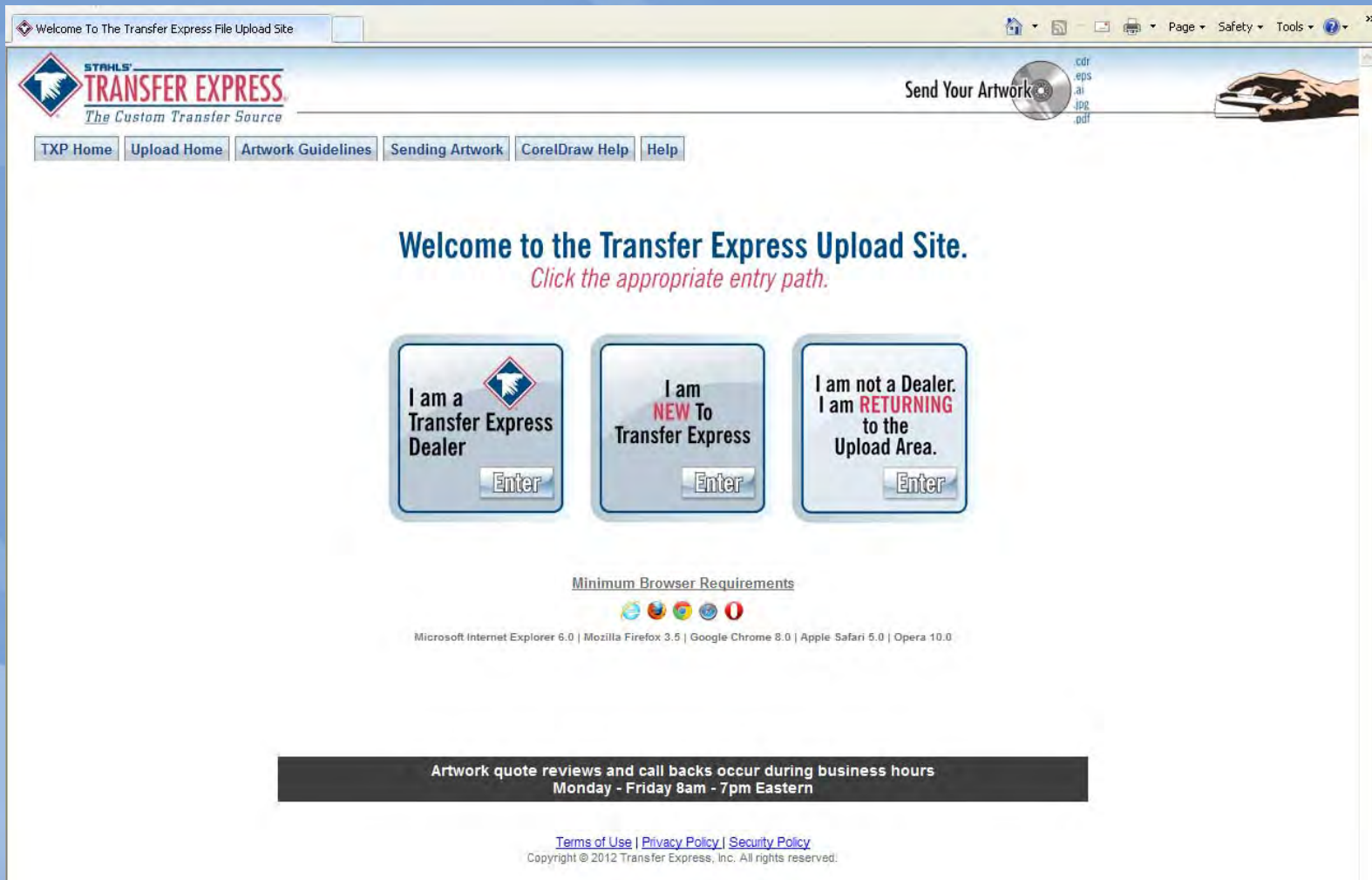
VIEW LAYOUTS

VIEW CLIP ART

1 2 3 4 5





Sending Us the Art




Welcome To The Transfer Express File Upload Site


STAHLS
TRANSFER EXPRESS
The Custom Transfer Source

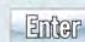
Send Your Artwork  

[TXP Home](#) [Upload Home](#) [Artwork Guidelines](#) [Sending Artwork](#) [CorelDraw Help](#) [Help](#)


Welcome to the Transfer Express Upload Site.
Click the appropriate entry path.

I am a Transfer Express Dealer 

I am NEW To Transfer Express 

I am not a Dealer. I am RETURNING to the Upload Area. 

Minimum Browser Requirements



Microsoft Internet Explorer 6.0 | Mozilla Firefox 3.5 | Google Chrome 8.0 | Apple Safari 5.0 | Opera 10.0

Artwork quote reviews and call backs occur during business hours
Monday - Friday 8am - 7pm Eastern

[Terms of Use](#) | [Privacy Policy](#) | [Security Policy](#)
Copyright © 2012 Transfer Express, Inc. All rights reserved.



Coming Soon!



A pair of red theater curtains with gold tassels, partially drawn to reveal a dark stage. The curtains are set against a blue background with light rays.

Improved Easy View™

- Add text lines
- Move artwork
- Use our art to create your own layout
- Enlarge or Reduce artwork
- Create Gang sheets
- See Your Layout on Apparel



Thank You for Attending

Next GGG Webinar

- **No Digitizer On Hand? No Problem!**
- **Tuesday, October 22, 2013**
- **2:00 PM – 3:00 PM**
- **Sponsor: Imprintables Warehouse**

Next Transfer Express GGG Webinar

- **Warm Up Winter Sales**
- **Thursday, November 7, 2013**
- **2:00 PM - 3:00 PM**

What topics you would like to see covered in a Transfer Express webinar?

Email them to: info@transferexpress.com

Info@greatgarmentgraphics.com

www.greatgarmentgraphics.com

