



# Improving access to diagnosis and treatment of Alzheimer's Disease

Advancing **Clinical Care** and **Equity** through **Scalable Solutions** in **Alzheimer's Disease** diagnosis and treatment

ACCESS-AD is a pan-European, public-private partnership working to ensure that scientific advances in Alzheimer's disease diagnosis and treatment can be delivered across diverse healthcare settings. By integrating brain imaging, biomarkers, digital tools, new treatments and real-world evidence, ACCESS-AD will enable earlier diagnosis, safer use of disease-modifying therapies and more equitable access to care.

## BACKGROUND

Alzheimer's disease (AD) continues to be one of the most significant healthcare challenges globally – with **139 million dementia patients** predicted by 2050, **1.6 million deaths** yearly, **\$1.3 trillion** global cost and a **massive social burden** for both patients and their families alike.

### CURRENT CHALLENGES IN AD CARE

- |                                                                              |                                                                          |                                                                             |
|------------------------------------------------------------------------------|--------------------------------------------------------------------------|-----------------------------------------------------------------------------|
| <b>01</b> Fragmented data & absence of centralised infrastructure            | <b>02</b> Limited accessibility to affordable, scalable diagnostic tools | <b>03</b> Lack of personalised, equitable strategies for DMT implementation |
| <b>04</b> Insufficient validation of cost-effective, AI-enabled technologies | <b>05</b> Fragmented stakeholders & policy misalignment                  | <b>06</b> Insufficient patient and caregiver involvement                    |

**OUR RESPONSE: INTEGRATION, INNOVATION, AND INCLUSION**

## PROJECT STRUCTURE

- COORDINATE:** Establish a robust project management framework, ensuring on-time delivery of the project milestones
- INTEGRATE:** Identify, integrate, and expand available data across Europe to counteract the fragmentation of knowledge collection, leveraging InRAD, EPND and the AD Workbench
- DETECT:** Reduce patient access barriers tailored to local clinical workflows by further developing imaging, biofluid biomarkers, digital monitoring tools and clinical standardisation
- STRATIFY:** Develop and deliver AI/ML based prediction models for tailored clinical decision-making workflows towards a precision medicine paradigm
- TREAT:** Collect real-world evidence on the safety, usability, and implementation of DMTs across diverse clinical settings, and explore emerging therapeutic approaches
- EVALUATE & SUSTAIN:** Integrating economic, regulatory and ethical aspects we will chart a sustainable pathway for uptake of new AD therapies, preparing Europe for a new era of AD therapy
- INVOLVE & ENGAGE:** Implement strategies for involvement, engagement, communication and dissemination, to strengthen the public awareness of this initiative, promote preventive healthcare measures and ensure that the needs and perspectives of people affected by dementia are considered

- Integrate multimodal diagnostics (neuroimaging, blood-based biomarkers, digital health tools), new treatments and real-world evidence
- Deploy AI-driven decision support
- Empower primary care and community settings
- Build a sustainable European data and governance framework

## PARTNERS

**Alzheimer Europe**  
Luxembourg

**Amsterdam UMC**  
Amsterdam, The Netherlands

**Anavex Germany GmbH**  
Munich, Germany

**Centre for Research and Technology Hellas**  
Thessaloniki, Greece

**Clinica Universidad de Navarra**  
Pamplona, Spain

**DZNE**  
Bonn, Germany

**Eisai**  
Hatfield, UK

**Fraunhofer SCAI**  
St. Augustin, Germany

**Gates Ventures**  
Kirkland, WA, USA

**Hospital Clinic Barcelona & IDIBAPS**  
Barcelona, Spain

**InRAD**  
Deventer, The Netherlands

**Karolinska Institutet**  
Stockholm, Sweden

**King's College London**  
London, UK

**LMU & LMU Klinikum**  
Munich, Germany

**Motol University Hospital**  
Prague, Czech Republic

**Muhdo Health**  
Martlesham, UK

**Neotiv GmbH**  
Magdeburg, Germany

**Neurimmune**  
Schlieren, Switzerland

**NICE**  
Manchester, UK

**Positriago AG**  
Zürich, Switzerland

**Region Stockholm**  
Stockholm, Sweden

**Siemens Healthineers**  
Erlangen, Germany

**Société des Produits Nestlé**  
Vevey, Switzerland

**Stavanger University Hospital**  
Stavanger, Norway

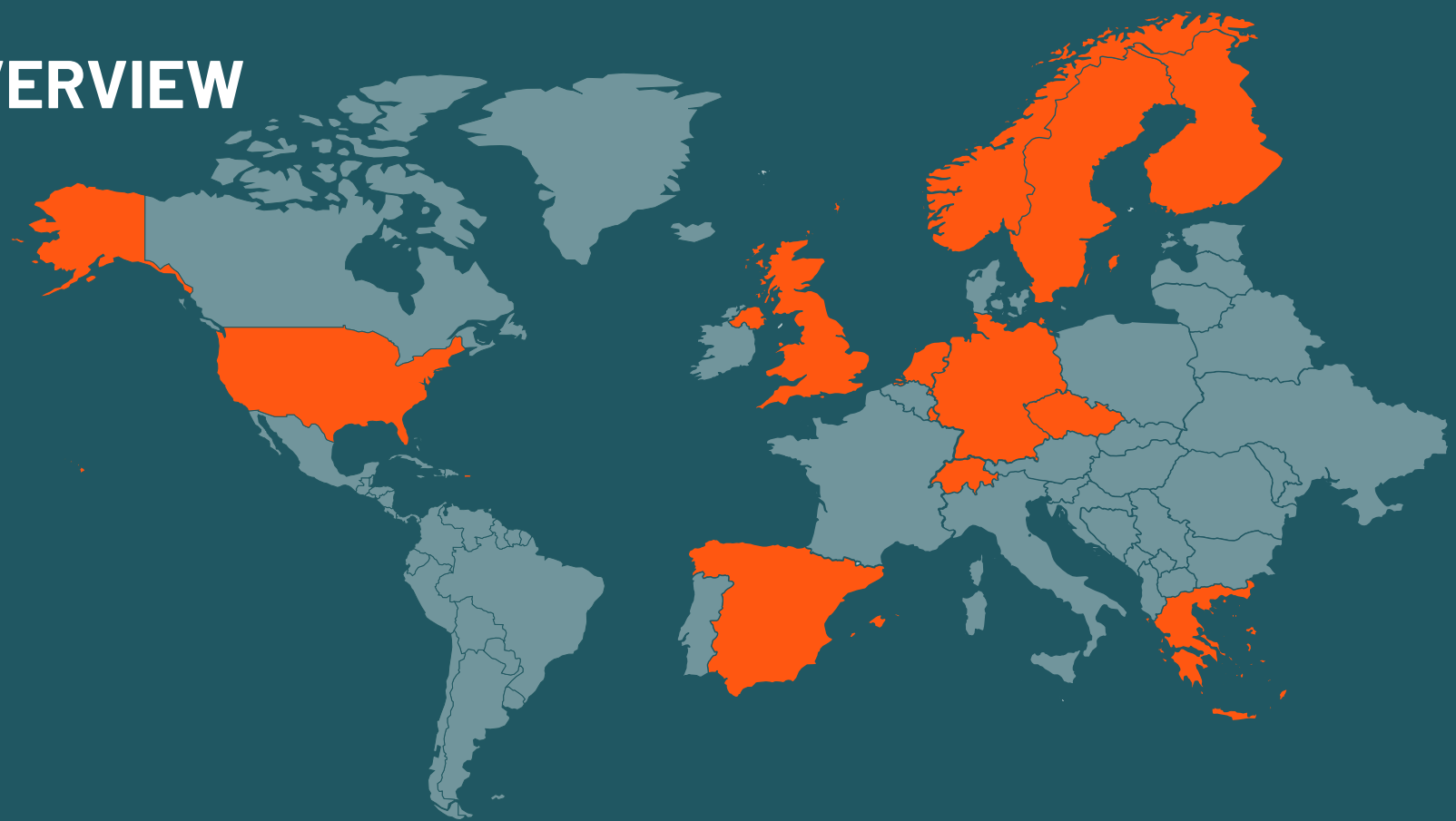
**Universitätsklinikum Erlangen**  
Erlangen, Germany

**University College London**  
London, UK

**University of Leicester**  
Leicester, UK

**Wellbeing services County of North Savo**  
Kuopio, Finland

## OVERVIEW



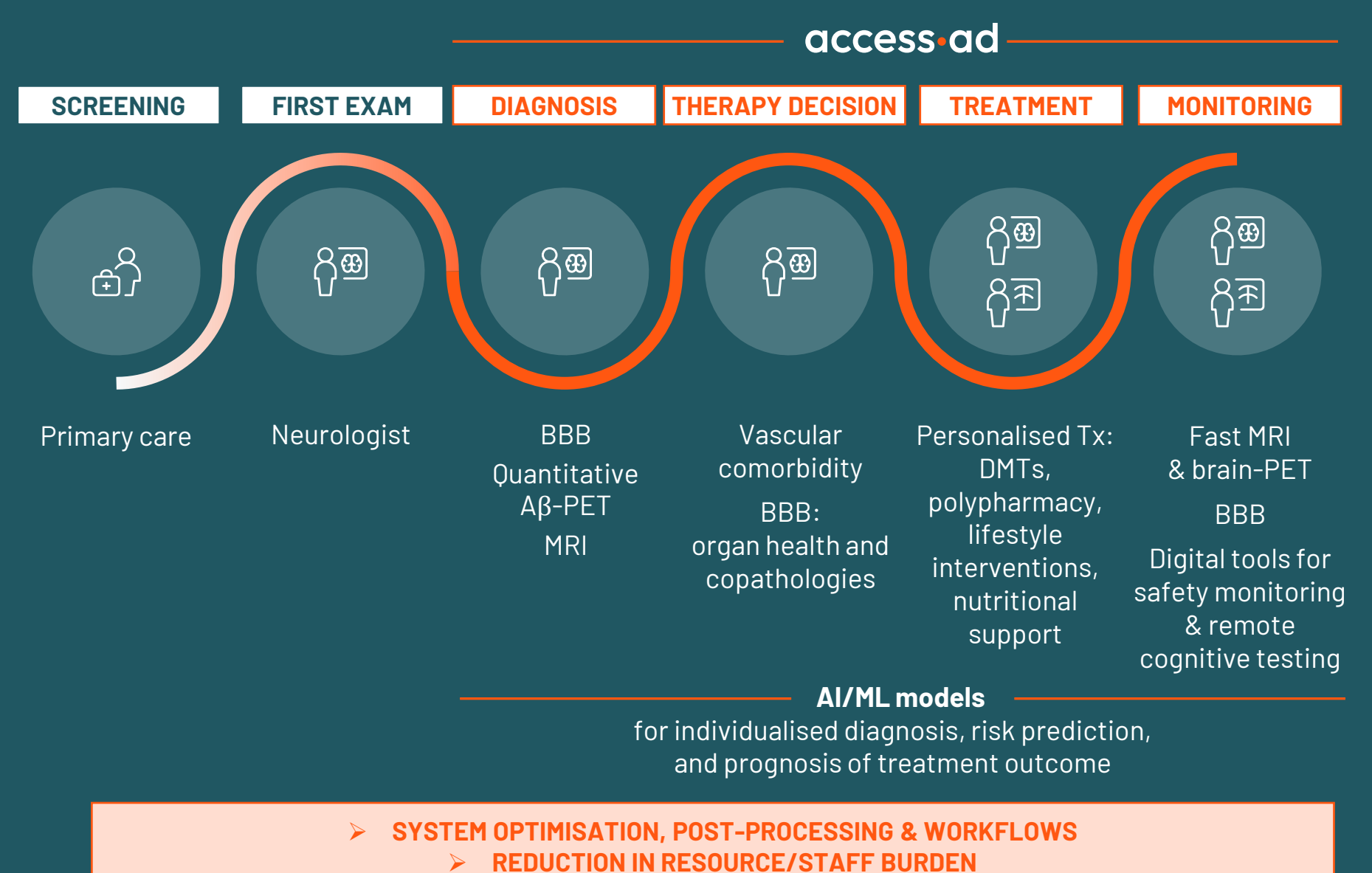
### FACTS & FIGURES

- 30+ academic and industry partners
- Funded by the EU's Innovative Health Initiative
- Project duration: 2026-2030
- Total project volume: 38 M €

### LEAD PARTNERS

<b>Frederik Barkhof</b> Amsterdam UMC Amsterdam, NL	<b>Dag Aarsland</b> King's College London London, UK
<b>Gaby Marquardt &amp; Haitham Mohamed</b> Siemens Healthineers Erlangen, DE	<b>Niranjan Bose</b> Gates Ventures Kirkland, WA, USA

## METHODOLOGY ACCESS-AD in the Alzheimer's disease patient journey



## Our Mission

To **transform the Alzheimer's patient journey** by turning cutting-edge science into everyday care – integrating **accessible imaging, biomarkers, digital tools and AI** to deliver **connected, inclusive and data-driven treatment pathways** across Europe

Integrate industry solutions for coordinated decision making

Harness AI potential to advance disease management

Harmonise & standardise procedures and evaluation methods

## Our Vision

To make **timely, personalised and equitable** Alzheimer's care a reality for every patient – wherever they live, ensuring better outcomes and sustainable healthcare systems