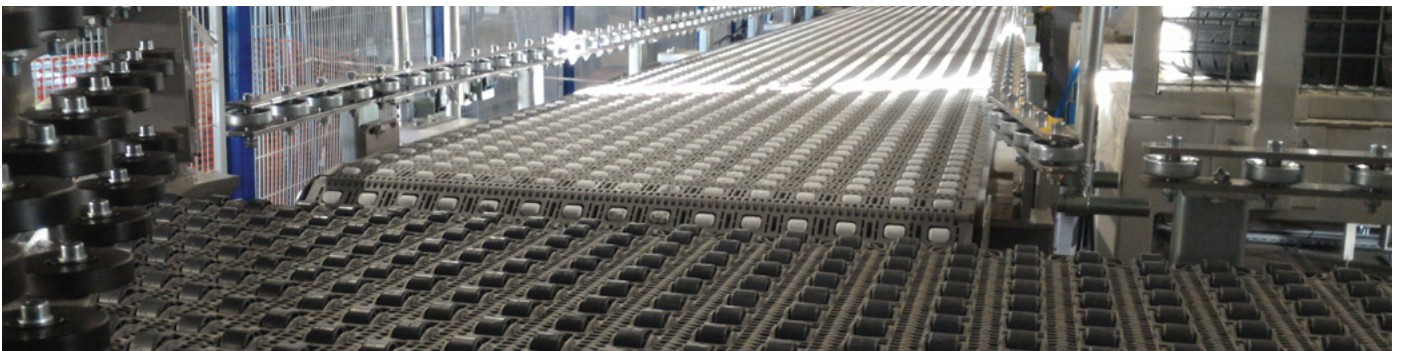
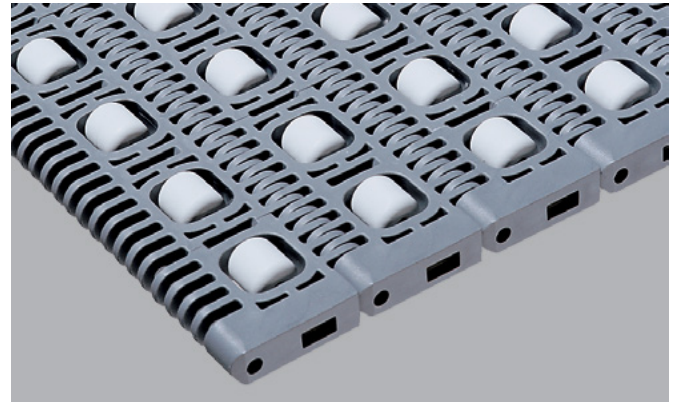
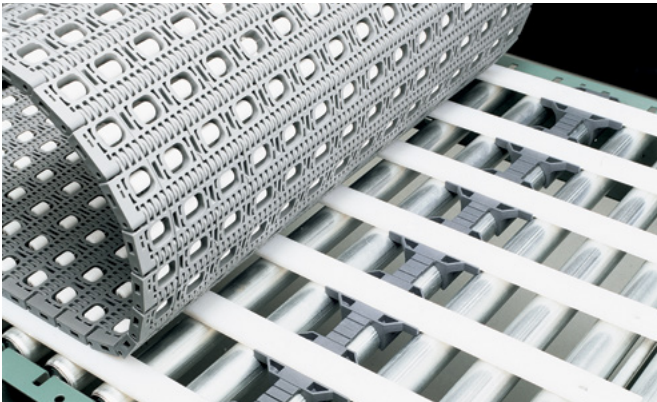


S400 ROLLER TOP BELTS IMPROVE ACCUMULATION WHILE MINIMIZING BACK PRESSURE AND MAINTENANCE

Intralox® Series 400 Roller Top™ belting improves accumulation capacity in several automotive applications, including tire and wheel assembly as well as seat, trim, and interior delivery. Handling approximately 50 ft (15 m) of accumulation between stops, the S400's durable acetal rollers rotate in the direction of belt travel to provide near-zero back pressure while also eliminating traditional roller systems' maintenance issues. Plus, every belt is custom built to fit your existing conveyor, ensuring seamless installations with no drilling or modification required.

Benefits for the Automotive Industry

- Remove the need for lubrication and tensioning
- Protect product quality with near-zero back pressure
- Decrease maintenance due to roller jams and breaks
- Eliminate drives by building longer conveyors
- Reduce noise compared to chain-driven live roller conveyors



To learn more about the S400 Roller Top belt, contact your Account Manager or [Intralox Customer Service](#).