

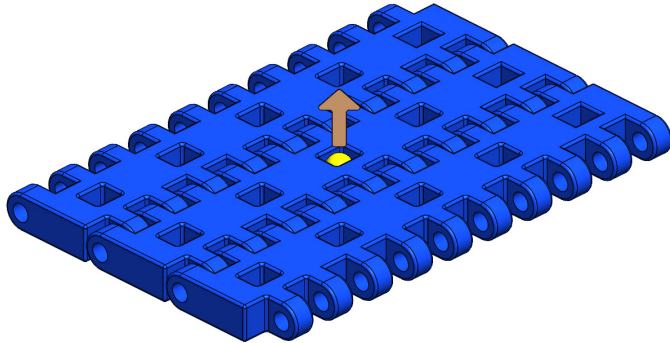


INTRALOX TENSIONER INSTRUCTIONS

FORCE LIMIT 400 LB

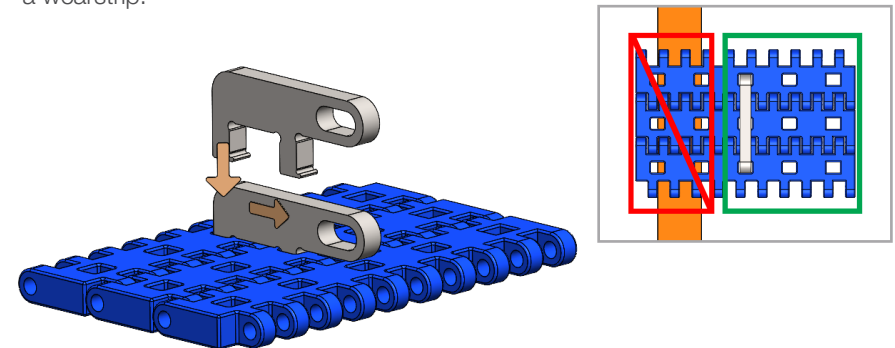
Step 1: Ensure Tensioner Pockets Are Clear

Ensure the tensioner pockets are clear of debris to allow full insertion.



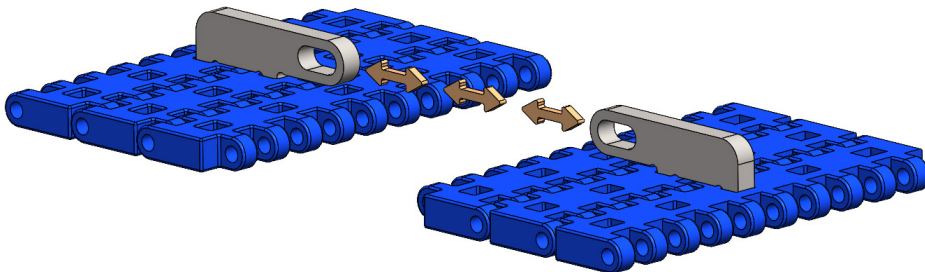
Step 2: Insert Tensioner into Pocket

The tensioner should drop into the pocket and securely engage the belt geometry when pulled. Do not put the tensioner in a pocket that is over a wearstrip.



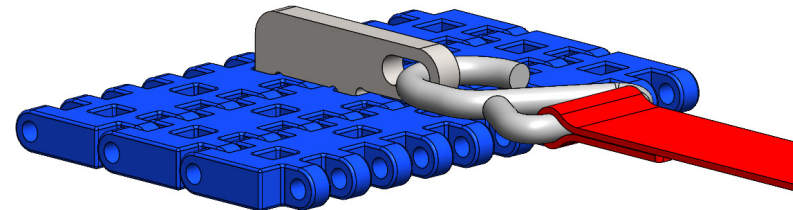
Step 3: Align Opposing Tensioner

Place the opposite tensioner in line with the first one to ensure proper alignment.



Step 4: Use Ratchet Strap to Tension Belt

Attach the ratchet strap hook to the tensioner and begin tightening the belt.



Use tensioners strictly in accordance with Intralox instructions. The tensioners are provided “as-is,” without warranty of any kind, express or implied, including but not limited to warranties of merchantability or fitness for a particular purpose. Recipient further acknowledges that use of the tensioners may involve certain risks, including but not limited to injury, property damage, or other losses, and assumes all such risks voluntarily. You hereby release, waive, and discharge Intralox and its officers, directors, employees, agents, affiliates, from any and all claims, demands, liabilities, actions, or causes of action arising out of or related to any loss, damage, or injury, including death, that may be sustained by you or any third party in connection with the use or possession of the tensioners.