

OPTIMIZE AIRFLOW. **MAXIMIZE THROUGHPUT EFFICIENCY.**

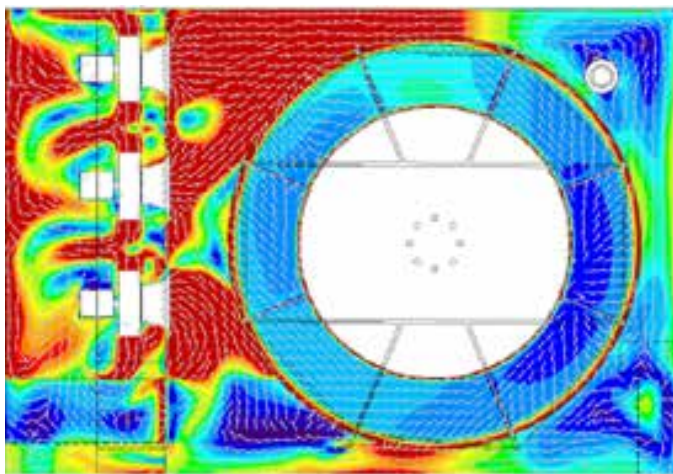
Conditioning Optimization—available exclusively from Intralox—helps food processors achieve maximum airflow efficiency, which increases throughput, improves product quality, enhances food safety, and reduces energy costs.

What Is Conditioning Optimization?

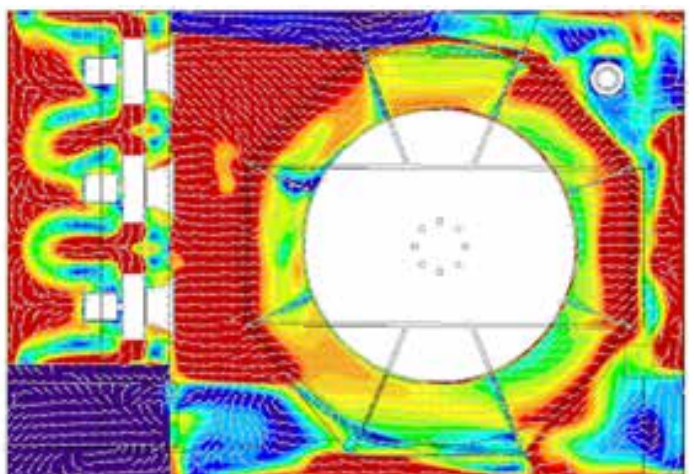
It's the first service of its kind available to food manufacturers. Intralox Conditioning Specialists study your spiral cooler or freezer to ensure heat transfer rates are optimized. We conduct proprietary airflow analyses and implement vital mechanical changes so your system delivers maximum efficiency, consistent product quality, and reduced energy consumption.



Base Line with Product Load



Optimization with Product Load



Computational fluid dynamics airflow simulations show a spiral freezer before and after conditioning optimization. On the left, blue shows minimal airflow on the belt surface. On the right, red, orange, and yellow indicate maximized airflow velocity across the spiral belting.

Why Is This Service Critical for Your Spiral Freezer?

Optimized airflow improves freezing efficiency, which has proven to:

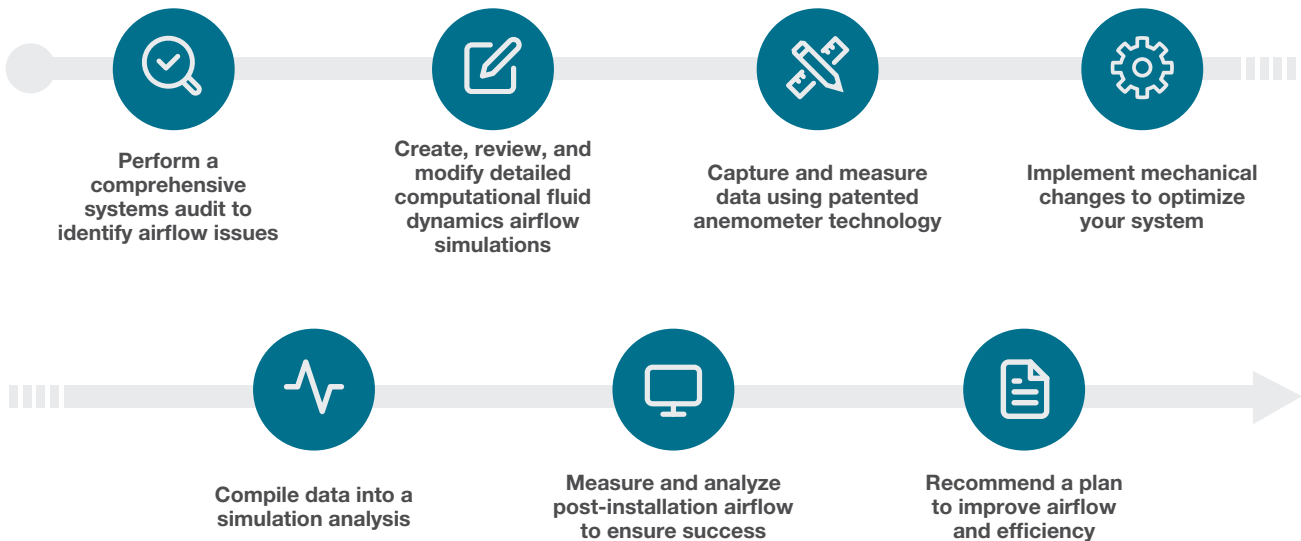
- Reduce dwell time, conditioning more product in a shorter period of time
- Minimize bacteria growth for improved food safety
- Decrease moisture loss and large ice crystal formation for less product damage and waste
- Mitigate ice buildup
- Enhance fan/coil performance
- Lower the energy consumption of freezers, often a plant's most power-hungry equipment



Ice buildup blocks airflow velocity, reducing system efficiency.

How Does the Process Work?

Whether you're a food processor or an OEM, Conditioning Optimization Services are available as a part of spiral optimization or as a consultation. Beginning with our proprietary airflow evaluation, Intralox Conditioning Specialists will:



For more about how our exclusive Conditioning Optimization Services can improve your operation's efficiency, [contact your Intralox Spiral Account Manager](#).