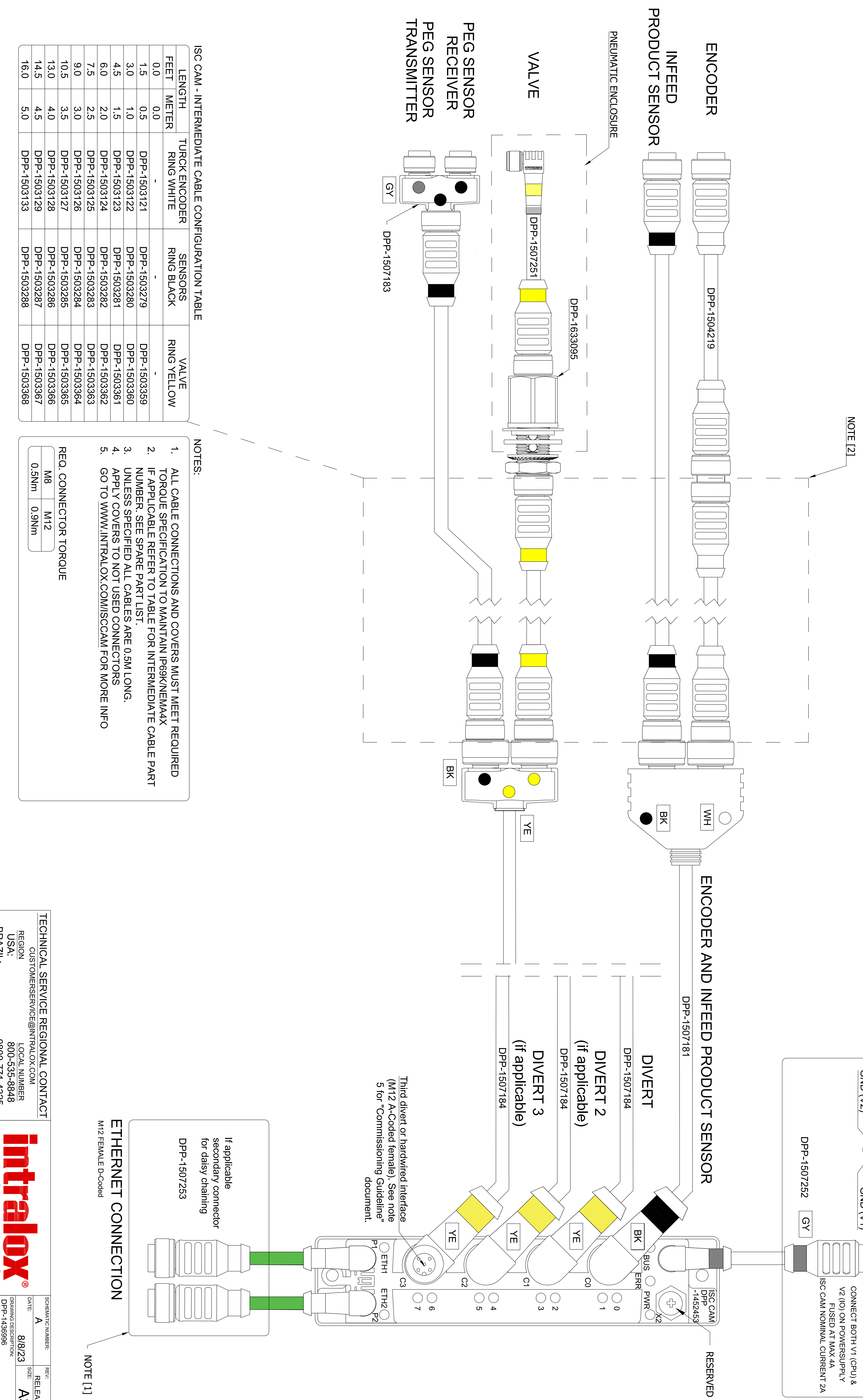
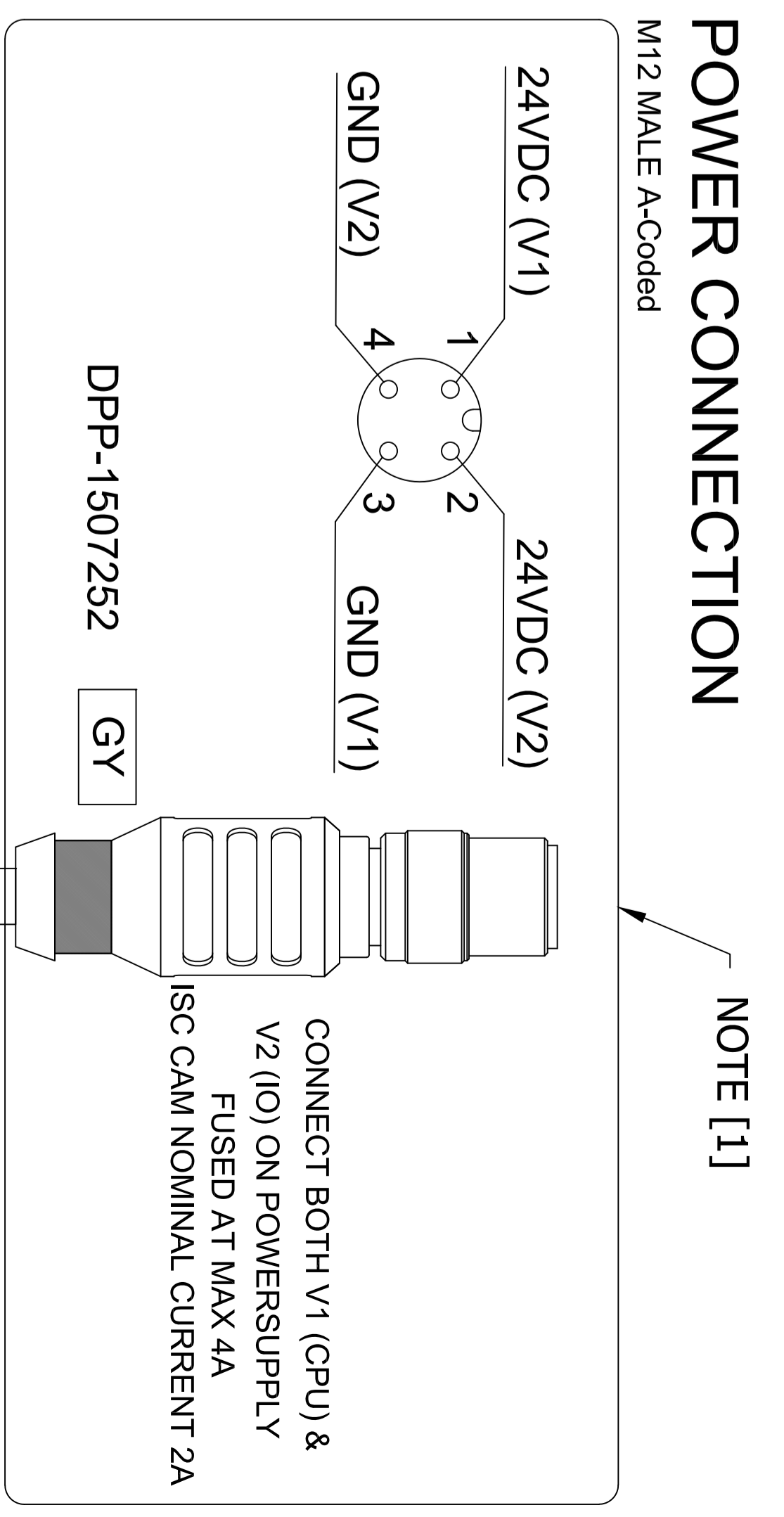


ISC CAM CONNECTION OVERVIEW



NOTE [2]



NOTES:

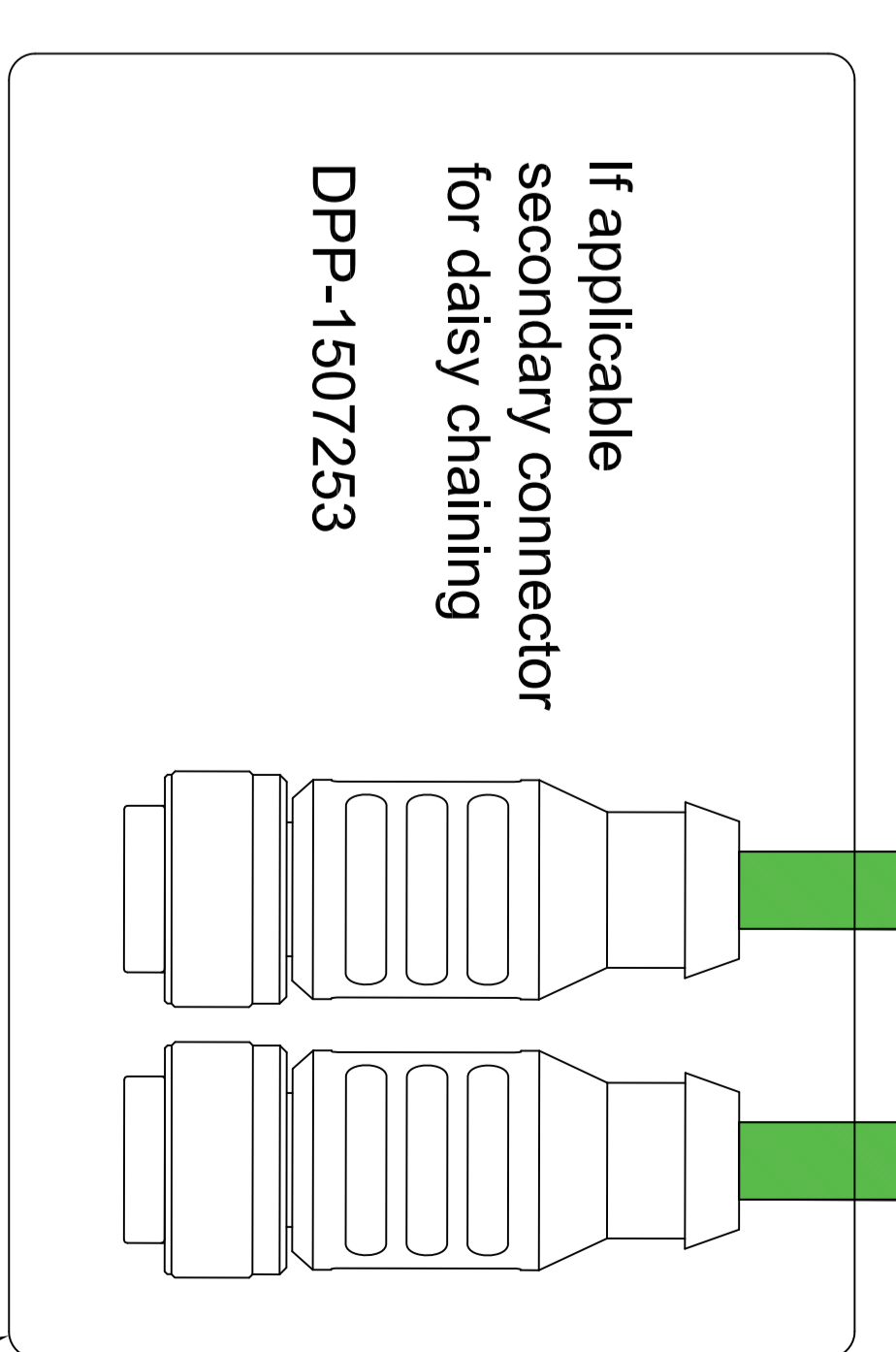
1. ALL CABLE CONNECTIONS AND COVERS MUST MEET REQUIRED TORQUE SPECIFICATION TO MAINTAIN IP69K/NEEMAX
2. IF APPLICABLE REFER TO TABLE FOR INTERMEDIATE CABLE PART NUMBER. SEE SPARE PART LIST.
3. UNLESS SPECIFIED ALL CABLES ARE 0.5M LONG.
4. APPLY COVERS TO NOT USED CONNECTORS
5. GO TO WWW.INTRALOX.COM/SCCAM FOR MORE INFO

ISC CAM - INTERMEDIATE CABLE CONFIGURATION TABLE

LENGTH FEET	METER	TURCK ENCODER RING WHITE	SENSORS RING BLACK	VALVE RING YELLOW
0.0	0.0	-	-	-
1.5	0.5	DPP-1503121	DPP-1503279	DPP-1503369
3.0	1.0	DPP-1503122	DPP-1503280	DPP-1503360
4.5	1.5	DPP-1503123	DPP-1503281	DPP-1503361
6.0	2.0	DPP-1503124	DPP-1503282	DPP-1503362
7.5	2.5	DPP-1503125	DPP-1503283	DPP-1503363
9.0	3.0	DPP-1503126	DPP-1503284	DPP-1503364
10.5	3.5	DPP-1503127	DPP-1503285	DPP-1503365
13.0	4.0	DPP-1503128	DPP-1503286	DPP-1503366
14.5	4.5	DPP-1503129	DPP-1503287	DPP-1503367
16.0	5.0	DPP-1503133	DPP-1503288	DPP-1503368

REQ. CONNECTOR TORQUE

M8	M12
0.5Nm	0.9Nm



Third divert or hardwired interface (M12 A-Coded female). See note 5 for "Commissioning Guideline" document.

TECHNICAL SERVICE REGIONAL CONTACT
CUSTOMERSERVICE@INTRALOX.COM

REGION
USA: 800-535-8848
BRAZIL: 0800-771-4325
EUROPE: 0800-022-9757
APAC: 4008-423-469

LOCAL NUMBER: 800-535-8848
PROJECT TITLE: AIM TECHNOLOGY WITH TURCK ENCODER

DATE: 8/8/23
DRAWING DESCRIPTION: DPP-1436986

SCHEMATIC NUMBER: A
REV: A3
RELEASED: 201