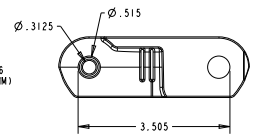
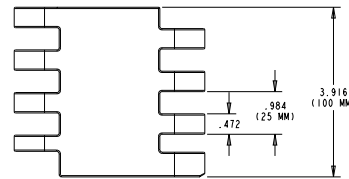
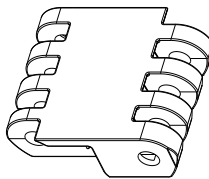


# S10000 AUTOMOTIVE BELTING: THICKER. STRONGER. DESIGNED TO LAST.

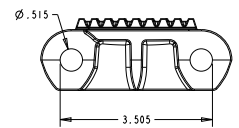
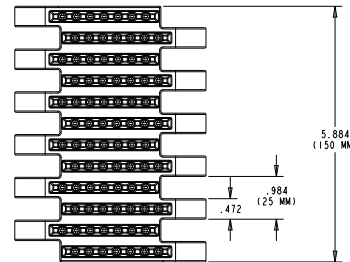
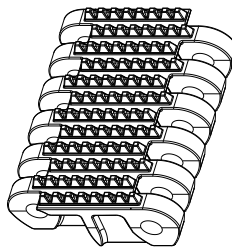
Intralox® Series 10000 belting outlasts the competition with 21–30% longer belt life. Its design eliminates belt mistracking and requires less maintenance. Superior engineering enables more uptime.

The benefits of plant optimization with S10000 belting start on day one and add up over time. You can expect a lower total cost of ownership (TCO) and increased plant productivity.

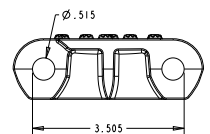
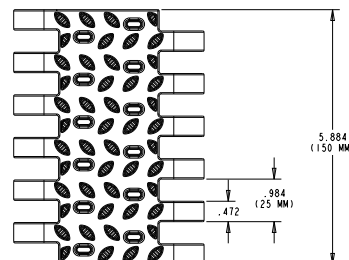
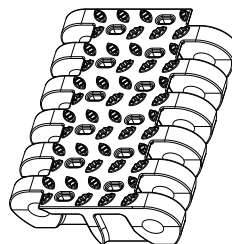
## Intralox SkidVeyor™ / For Stamping and Body Shop Applications



## Intralox PeopleVeyor™ / For Trim, Chassis, and General Assembly Applications

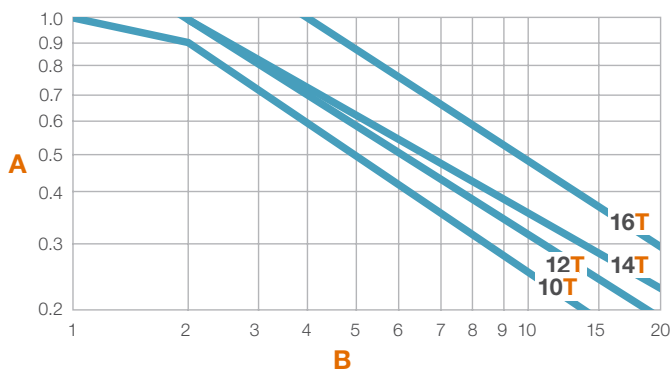


## Intralox VehicleVeyor™ / For Inspection Lines



## Heavy-duty Strength for Automotive's Toughest Challenges

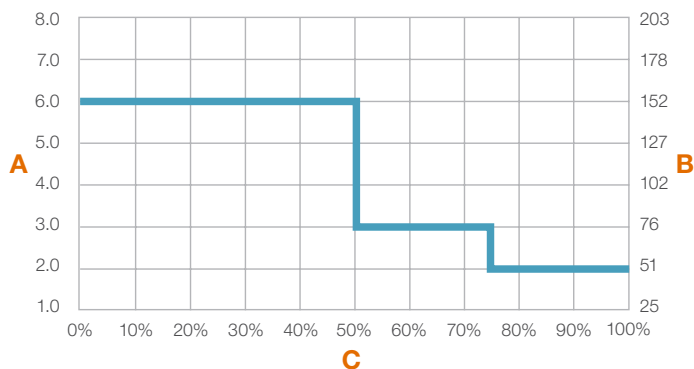
**S10000 Strength Factor**



**A** = Strength Factor  
**B** = Speed/Length Ratio (V/L)  
**T** = Number of Teeth  
**V** = Belt Speed, ft/min (m/min)  
**L** = Shaft Centerline Distance, ft (m)

To determine the speed/length ratio, divide the belt speed by the shaft centerline distance. The strength factor is found at the intersection of the speed/length ratio and the appropriate sprocket line.

**Sprocket Spacing as a Function of Belt Strength Utilized**



**A** = Sprocket Spacing, in  
**B** = Sprocket Spacing, mm  
**C** = Percentage of Allowable Belt Strength Utilized

	S10000	Next-strongest Belt	Difference
Total Thickness	36.66 mm	30 mm	22%
Rod Diameter	12.7 mm	10 mm	27%
Distance Between Rod and Bottom	11.45 mm	10 mm	15%
Wearable Distance (after subtracting 3-mm safety margin)	<b>8.45 mm</b>	<b>7 mm</b>	<b>+21%</b>

Available S10000 Configurations			
Style	Material	Strength (lb/ft)	Strength (kg/m)
Flat Top	Acetal	10,000	14,882
	High-Strength Electrically Conductive (HSEC) Acetal*	8,000	11,905
Mold to Width Flat Top	Acetal (3.9 in width)	2,500	3,720
	Acetal (7.9 in width)	5,800	8,631
	HSEC Acetal (3.9 in width)	2,000	2,976
	HSEC Acetal (7.9 in width)	4,700	6,994
Non Skid Raised Rib	HSEC Acetal	8,000	11,905
Non Skid Perforated	Acetal	10,000	14,882
	HSEC Acetal	8,000	11,905

\*Features a surface resistance of 10<sup>5</sup> ohms per square

What goals can we help you accomplish?  
[Connect with an Intralox Tire and Automotive expert](#) to discuss your needs.