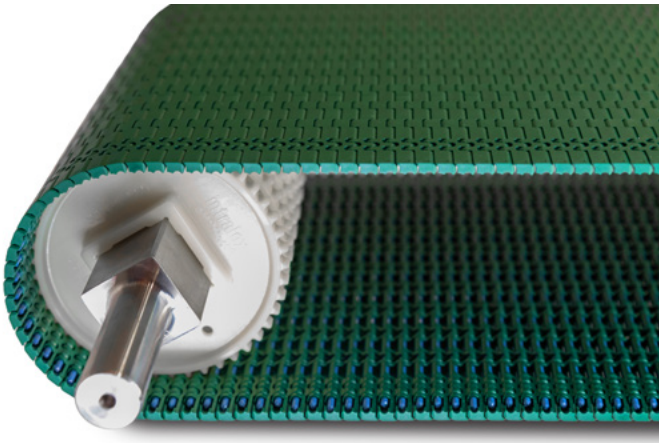


# ONE BELT ELIMINATES MULTIPLE RISKS IN CANMAKING



Reduce downtime and production risks while meeting fire safety requirements with Intralox® Series 560 belting in flame retardant thermoplastic polyester (FR TPES). Ideal for lines requiring fire breaks, this belting is part of a solution that eliminates dead plate transfers—and the downtime and product damage they cause—from your layout.

Your high-speed canmaking line is only as efficient as your weakest transfer. Our S560 belting in FR TPES pairs perfectly with the Intralox nosebar transfer unit to eliminate weak points and enable faster, risk-free production. Say goodbye to tipping, stranding, and downed cans. These transfers are simple to install and require roughly zero maintenance or adjustments over time. Protect your time and products with the most reliable transfer technology on the market.

## Benefits

- Reduce downtime
- 70% fewer tipped cans
- Stop mixed label pallets
- Meet safety requirements

## Key Applications

- Periodic fire breaks in high-speed can lines
- Incoming and outgoing transfers where dead plates create inefficiency
- Quality-critical handling between processing, inspection, and packaging zones

Recommended Accessories	Size
Nosebar	12 in (305 mm)
Nosebar transfer unit	24 in, 36 in, and 48 in (610 mm, 914 mm, and 1,219 mm)
Molded sprockets	4.6 in (117 mm) pitch diameter with 1.5 in (40 mm) square bore

To specify your firebreak zones and order S560 belting in FR TPES, [contact Intralox Customer Service.](#)