

TEXCAN

A Sonepar Company

Responsive. Reliable. Respected.

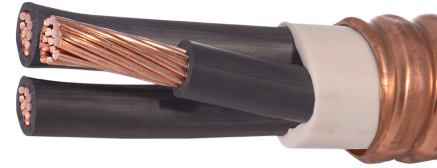
VITALink® MC 2-Hour Fire Rated Power Cable



VITALink® MC is a self-contained CSA-approved 2-hour fire rated cable system that offers cost, reliability, and ease of installation advantages over other methods of providing Fire Rated Circuits.

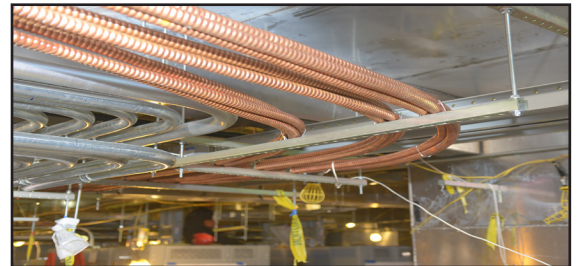
Key Features

- Standard installation methods
- Simple termination, only standard tools required
- Stock available to cut to specific lengths for immediate delivery
- Available in long lengths, eliminating the need for splicing
- Suitable for wet locations
- Suitable for direct burial
- MC - CCW copper armour
- Continuous corrugated copper armour is impervious to moisture
- Connectors stocked at Texcan (sized for each cable)
- Easier to bend than traditional 2-hour fire rated cables
- Fully qualified listing to UL 2196 and ULC-S139 Vertical/Horizontal with hose stream
- Diversified sizes and conductors



VITALink® MC 2-Hour for all your Specialty Requirements

- Fire alarms
- Emergency device activation
- Fire pumps
- Emergency systems
- Firefighter elevators
- Smoke evacuation fans
- High-rises
- Hospitals
- Auditoriums
- Stadiums
- College & universities
- Fire safety room / refuge



Contact a wire and cable specialist today to learn more!

1.800.665.1025 or texcan.sales@texcan.ca

We carry one of the largest inventories of industrial, commercial and residential wires and cables in Canada.

For info about our products and services: www.texcan.com

When others can't, TEXCAN

WIRE & CABLE SPECIALISTS SINCE 1978

wire and cable specialists since 1978



A Sonepar Company

wire and cable specialists since 1978

VITALink® MC Single Conductor 2-Hour Fire Rated Power Cable

| Product Code | Size (AWG kcmil) | # of Cond. | Nom. Core Diameter (In) | Nom. Armour Diameter (In) | Approximate Net Weight (Lbs/1000 ft) | Ampacity 75°C / 90°C Amps* |
|----------------|------------------|------------|-------------------------|---------------------------|--------------------------------------|----------------------------|
| 26-VM011X0-500 | 1/0 | 1 | 0.66 | 1.00 | 815 | 230/260 |
| 26-VM012X0-500 | 2/0 | 1 | 0.70 | 1.04 | 925 | 265/300 |
| 26-VM013X0-500 | 3/0 | 1 | 0.75 | 1.08 | 1,055 | 310/350 |
| 26-VM014X0-500 | 4/0 | 1 | 0.81 | 1.16 | 1,235 | 360/405 |
| 26-VM01250-500 | 250 | 1 | 0.89 | 1.22 | 1,410 | 405/455 |
| 26-VM01350-500 | 350 | 1 | 0.99 | 1.35 | 1,795 | 505/570 |
| 26-VM01500-500 | 500 | 1 | 1.13 | 1.50 | 2,350 | 620/700 |
| 26-VM01750-500 | 750 | 1 | 1.34 | 1.73 | 3,285 | 785/885 |

*Ampacity per CEC Table 1

VITALink® MC Multi Conductor 2-Hour Fire Rated Power Cable

| Product Code | Size (AWG kcmil) | # of Cond. | Nom. Core Diameter (In) | Nom. Armour Diameter (In) | Approximate Net Weight (Lbs/1000 ft) | Ampacity 75°C / 90°C Amps* |
|----------------|------------------|------------|-------------------------|---------------------------|--------------------------------------|----------------------------|
| 26-VM02014-500 | 14 | 2 | 0.49 | 0.82 | 395 | 20/25 |
| 26-VM02012-500 | 12 | 2 | 0.53 | 0.82 | 415 | 25/30 |
| 26-VM02010-500 | 10 | 2 | 0.58 | 0.89 | 475 | 35/40 |
| 26-VM03014-500 | 14 | 3 | 0.52 | 0.82 | 425 | 20/25 |
| 26-VM03012-500 | 12 | 3 | 0.56 | 0.89 | 475 | 25/30 |
| 26-VM03010-500 | 10 | 3 | 0.61 | 0.94 | 542 | 35/40 |
| 26-VM03008-500 | 8 | 3 | 0.72 | 1.04 | 675 | 50/55 |
| 26-VM03006-500 | 6 | 3 | 0.80 | 1.16 | 840 | 65/75 |
| 26-VM03004-500 | 4 | 3 | 0.91 | 1.24 | 1,140 | 85/95 |
| 26-VM03003-500 | 3 | 3 | 0.97 | 1.30 | 1,210 | 100/115 |
| 26-VM03002-500 | 2 | 3 | 1.04 | 1.41 | 1,400 | 115/130 |
| 26-VM03001-500 | 1 | 3 | 1.21 | 1.59 | 1,715 | 130/145 |
| 26-VM031X0-500 | 1/0 | 3 | 1.29 | 1.67 | 1,990 | 150/170 |
| 26-VM032X0-500 | 2/0 | 3 | 1.39 | 1.80 | 2,345 | 175/195 |
| 26-VM033X0-500 | 3/0 | 3 | 1.49 | 1.92 | 2,755 | 200/225 |
| 26-VM034X0-500 | 4/0 | 3 | 1.62 | 2.04 | 3,305 | 230/260 |
| 26-VM03250-500 | 250 | 3 | 1.80 | 2.26 | 3,870 | 255/290 |
| 26-VM03350-500 | 350 | 3 | 2.02 | 2.48 | 5,015 | 310/350 |
| 26-VM03500-500 | 500 | 3 | 2.30 | 2.82 | 6,720 | 380/430 |
| 26-VM04014-500 | 14 | 4 | 0.57 | 0.89 | 480 | 20/25 |
| 26-VM04012-500 | 12 | 4 | 0.62 | 0.94 | 575 | 25/30 |
| 26-VM04010-500 | 10 | 4 | 0.67 | 1.00 | 635 | 35/40 |
| 26-VM04008-500 | 8 | 4 | 0.80 | 1.16 | 815 | 50/55 |
| 26-VM04006-500 | 6 | 4 | 0.89 | 1.22 | 990 | 65/75 |
| 26-VM04004-500 | 4 | 4 | 1.00 | 1.35 | 1,285 | 85/95 |
| 26-VM04003-500 | 3 | 4 | 1.07 | 1.41 | 1,475 | 100/115 |
| 26-VM04002-500 | 2 | 4 | 1.15 | 1.50 | 1,710 | 115/130 |
| 26-VM04001-500 | 1 | 4 | 1.34 | 1.73 | 2,125 | 130/145 |
| 26-VM041X0-500 | 1/0 | 4 | 1.43 | 1.82 | 2,485 | 150/170 |
| 26-VM042X0-500 | 2/0 | 4 | 1.54 | 1.95 | 2,935 | 175/195 |
| 26-VM043X0-500 | 3/0 | 4 | 1.68 | 2.12 | 3,530 | 200/225 |
| 26-VM044X0-500 | 4/0 | 4 | 1.82 | 2.26 | 4,205 | 230/260 |
| 26-VM04250-500 | 250 | 4 | 2.00 | 2.46 | 4,925 | 255/290 |
| 26-VM04350-500 | 350 | 4 | 2.25 | 2.71 | 6,420 | 310/350 |
| 26-VM04500-500 | 500 | 4 | 2.60 | 3.13 | 8,740 | 380/430 |

**CEC Table 2, ampacities are based on three current carrying conductors