



Generative AI: A New Frontier in Innovating Public Services

**LA County 20th Annual Leadership Conference
June 14, 2023**

**Michael Allen
Laserfiche Chief Technology Officer**

Agenda

- Generative AI: What is it?
- Large language models: A breakthrough technology
- Digital transformation playbooks: More valuable than ever
- Using AI won't happen automatically
- Public trust in AI: An uphill road
- AI risks

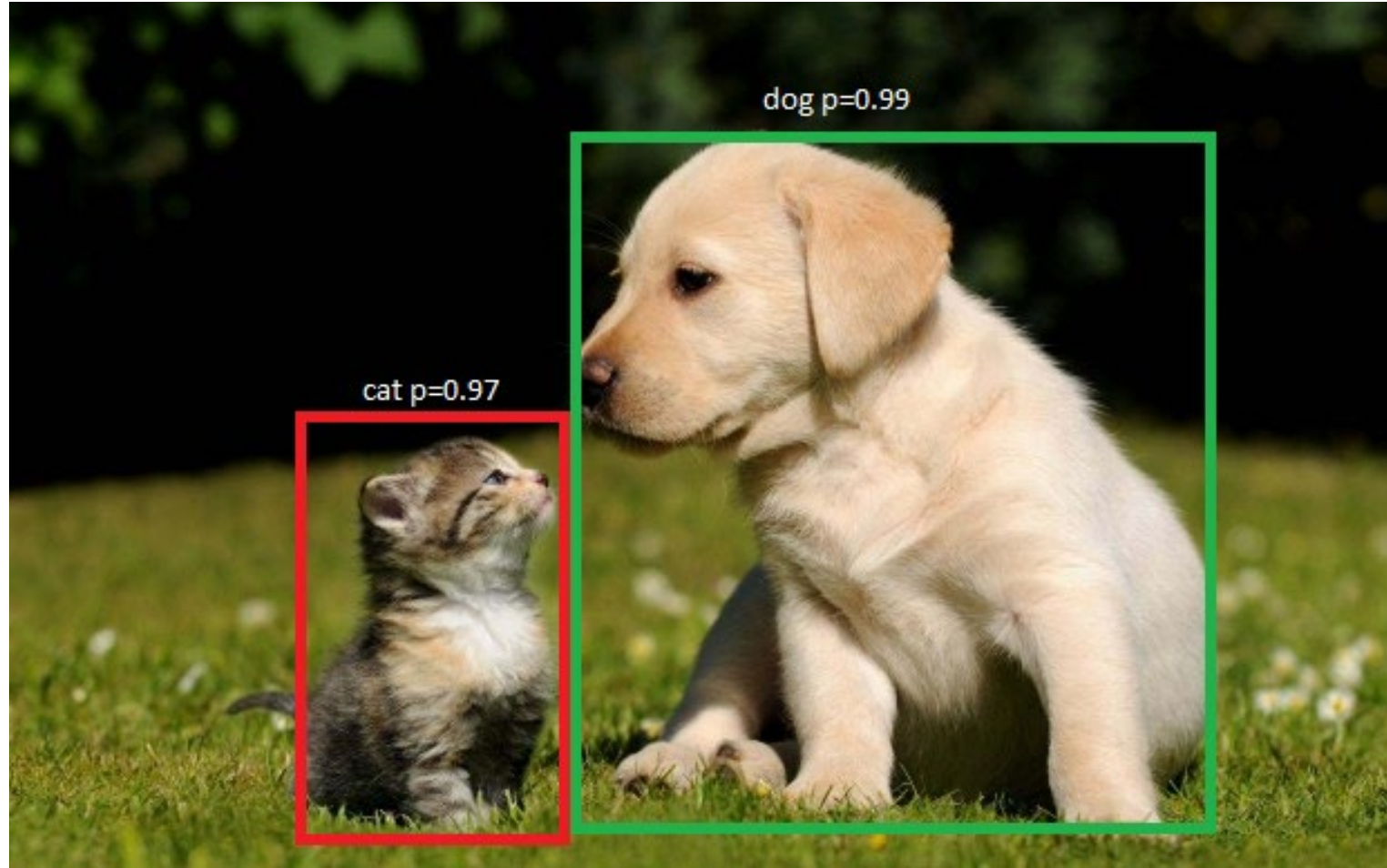
Artificial Intelligence: Promise vs. Reality



Source:

Left image: Generated by Bing Image Creator (DALL-E)

Artificial Intelligence: Promise vs. Reality



Source:

Left image: Generated by Bing Image Creator (DALL-E)

Right image: Pixels Info, "Cute Dog and Cat Wallpaper", May 2023, <https://www.pixelstalk.net/cute-dog-and-cat-wallpaper/>

Have You Tried ChatGPT?



REUTERS®

World ▾

Business ▾

Markets ▾

Sustainability ▾

Legal ▾

Breakingviews

Technology ▾



Technology



ChatGPT sets record for fastest-growing user base - analyst note

By Krystal Hu ▾

February 2, 2023 7:33 AM PST · Updated 4 months ago

Source:

Left image: Reuters, May 2023, <https://www.reuters.com/technology/chatgpt-sets-record-fastest-growing-user-base-analyst-note-2023-02-01/>

Have You Tried ChatGPT?



REUTERS®

World ▾

Business ▾

Markets ▾

Sustainability ▾

Legal ▾

Breakingviews

Technology ▾



Technology



ChatGPT sets record for fastest-growing user base - analyst note

By Krystal Hu ▾

February 2, 2023 7:33 AM PST · Updated 4 months ago



Pew Research Center

RESEARCH TOPICS ▾

ALL PUBLICATIONS

METHODS

SHORT READS

[Home](#) > [Research Topics](#) > [Internet & Technology](#)

MAY 24, 2023



A majority of Americans have heard of ChatGPT, but few have tried it themselves

BY EMILY A. VOGELS

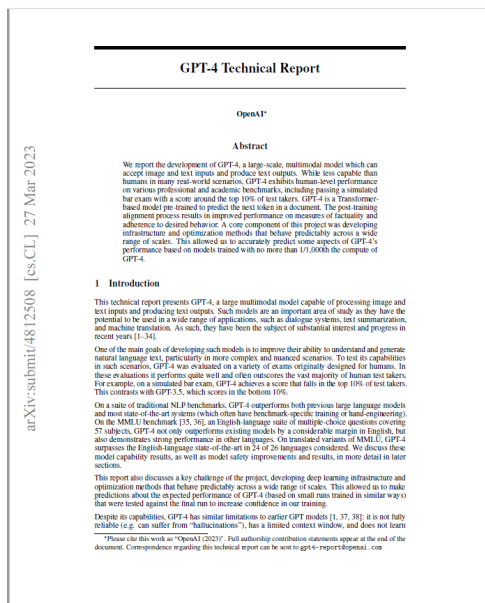
Source:

Left image: Reuters, May 2023, <https://www.reuters.com/technology/chatgpt-sets-record-fastest-growing-user-base-analyst-note-2023-02-01/>

Right image: Pew Research Center, May 2023, <https://www.pewresearch.org/short-reads/2023/05/24/a-majority-of-americans-have-heard-of-chatgpt-but-few-have-tried-it-themselves/>

GPT-4

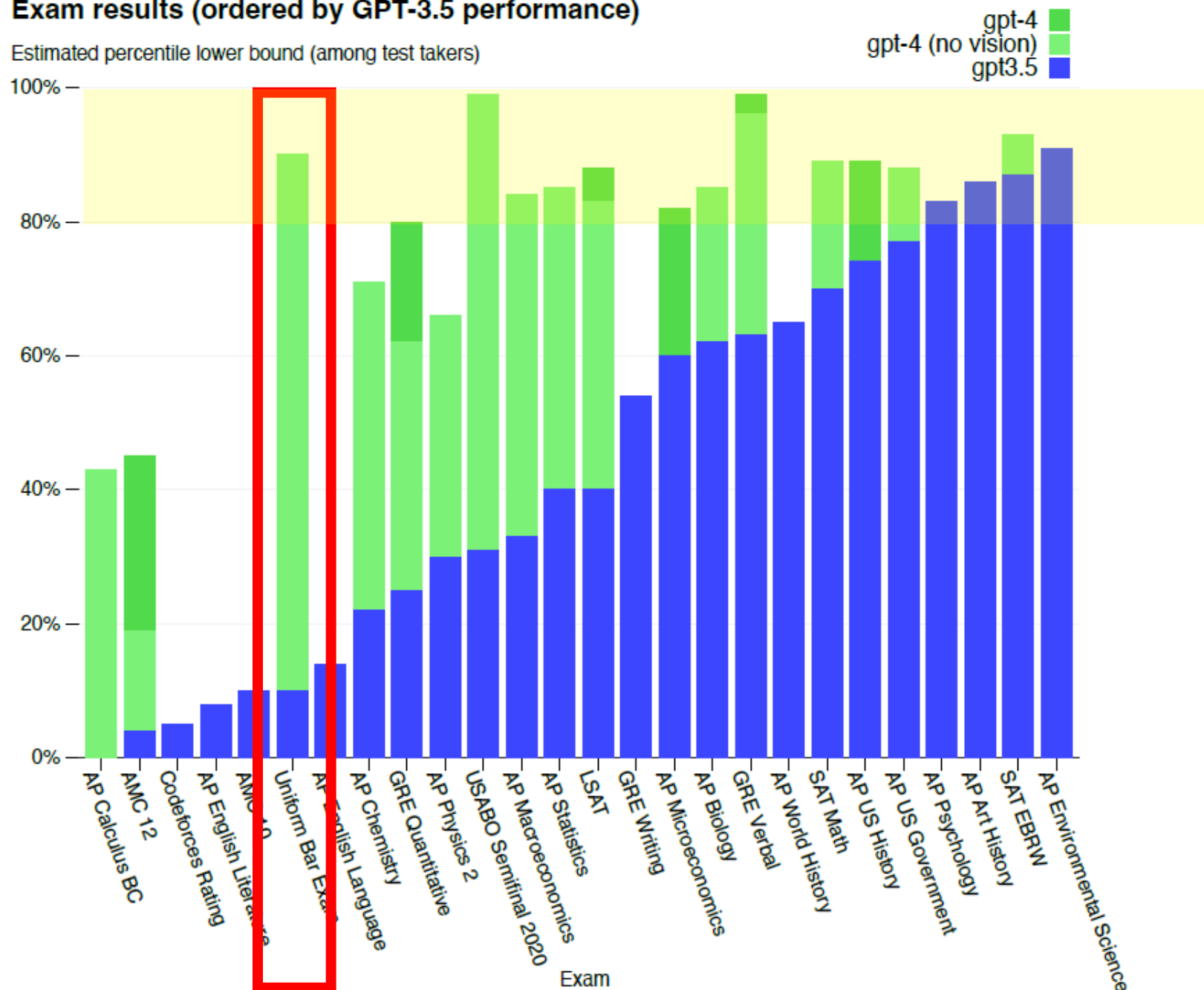
Technical Report



Source: OpenAI, "GPT-4 Technical Report", arXiv:submit/4812508

Exam results (ordered by GPT-3.5 performance)

Estimated percentile lower bound (among test takers)



GPT-4: Exam Scores

Exam	GPT-4	GPT-4 (no vision)	GPT-3.5
Uniform Bar Exam (MBE+MEE+MPT)	298 / 400 (~90th)	298 / 400 (~90th)	213 / 400 (~10th)
LSAT	163 (~88th)	161 (~83rd)	149 (~40th)
SAT Evidence-Based Reading & Writing	710 / 800 (~93rd)	710 / 800 (~93rd)	670 / 800 (~87th)
SAT Math	700 / 800 (~89th)	690 / 800 (~89th)	590 / 800 (~70th)
Graduate Record Examination (GRE) Quantitative	163 / 170 (~80th)	157 / 170 (~62nd)	147 / 170 (~25th)
Graduate Record Examination (GRE) Verbal	169 / 170 (~99th)	165 / 170 (~96th)	154 / 170 (~63rd)

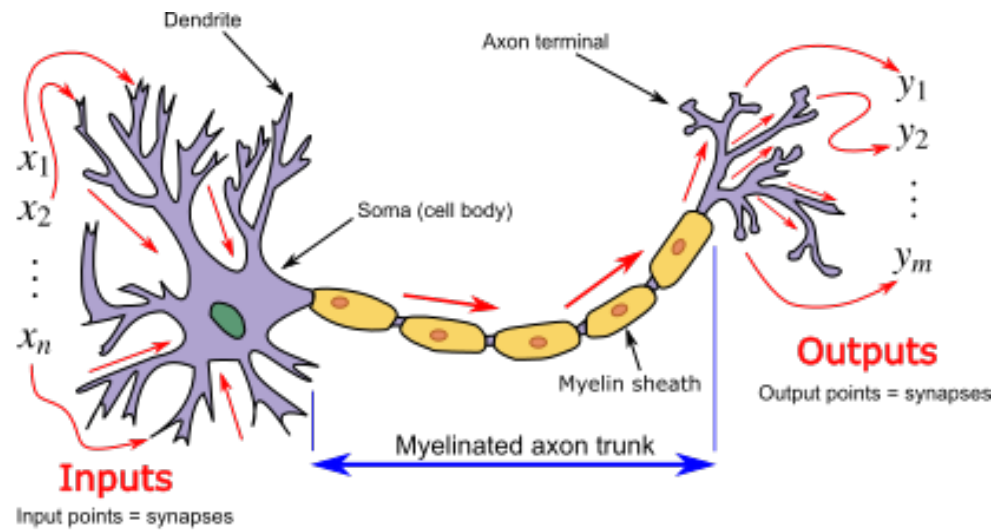
SAT Evidence-Based Reading & Writing	710 / 800 (~93rd)	710 / 800 (~93rd)	670 / 800 (~87th)
SAT Math	700 / 800 (~89th)	690 / 800 (~89th)	590 / 800 (~70th)



Codeforces Rating	392 (below 5th)	392 (below 5th)	260 (below 5th)
AP Art History	5 (86th - 100th)	5 (86th - 100th)	5 (86th - 100th)
AP Biology	5 (85th - 100th)	5 (85th - 100th)	4 (62nd - 85th)
AP Calculus BC	4 (43rd - 59th)	4 (43rd - 59th)	1 (0th - 7th)
AP Chemistry	4 (71st - 88th)	4 (71st - 88th)	2 (22nd - 46th)
AP English Language and Composition	2 (14th - 44th)	2 (14th - 44th)	2 (14th - 44th)
AP English Literature and Composition	2 (8th - 22nd)	2 (8th - 22nd)	2 (8th - 22nd)
AP Environmental Science	5 (91st - 100th)	5 (91st - 100th)	5 (91st - 100th)
AP Macroeconomics	5 (84th - 100th)	5 (84th - 100th)	2 (33rd - 48th)
AP Microeconomics	5 (82nd - 100th)	4 (60th - 82nd)	4 (60th - 82nd)
AP Physics 2	4 (66th - 84th)	4 (66th - 84th)	3 (30th - 66th)
AP Psychology	5 (83rd - 100th)	5 (83rd - 100th)	5 (83rd - 100th)
AP Statistics	5 (85th - 100th)	5 (85th - 100th)	3 (40th - 63rd)
AP US Government	5 (88th - 100th)	5 (88th - 100th)	4 (77th - 88th)
AP US History	5 (89th - 100th)	4 (74th - 89th)	4 (74th - 89th)
AP World History	4 (65th - 87th)	4 (65th - 87th)	4 (65th - 87th)
AMC 10 ³	30 / 150 (6th - 12th)	36 / 150 (10th - 19th)	36 / 150 (10th - 19th)
AMC 12 ³	60 / 150 (45th - 66th)	48 / 150 (19th - 40th)	30 / 150 (4th - 8th)
Introductory Sommelier (theory knowledge)	92 %	92 %	80 %
Certified Sommelier (theory knowledge)	86 %	86 %	58 %
Advanced Sommelier (theory knowledge)	77 %	77 %	46 %

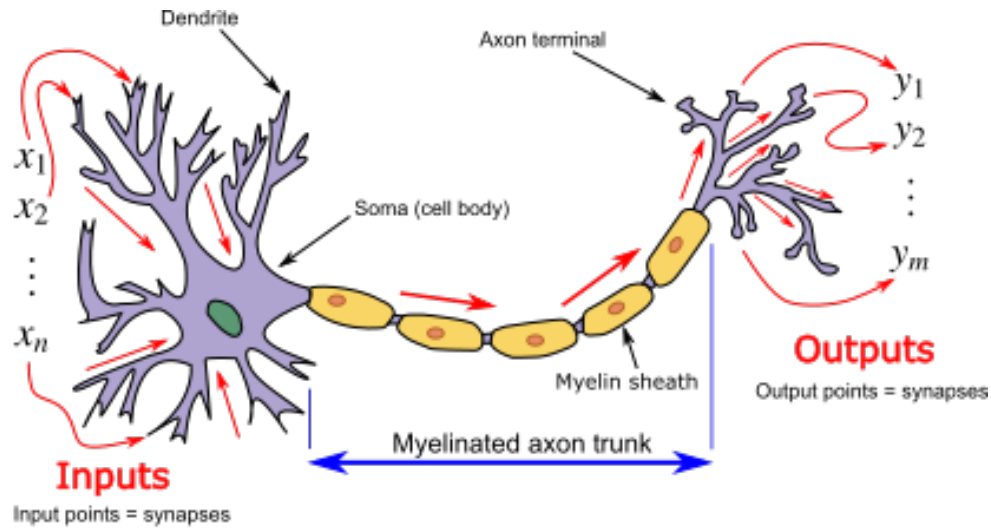
Source: OpenAI, "GPT-4 Technical Report"

Artificial Neural Networks (ANN)



Animal neuron model

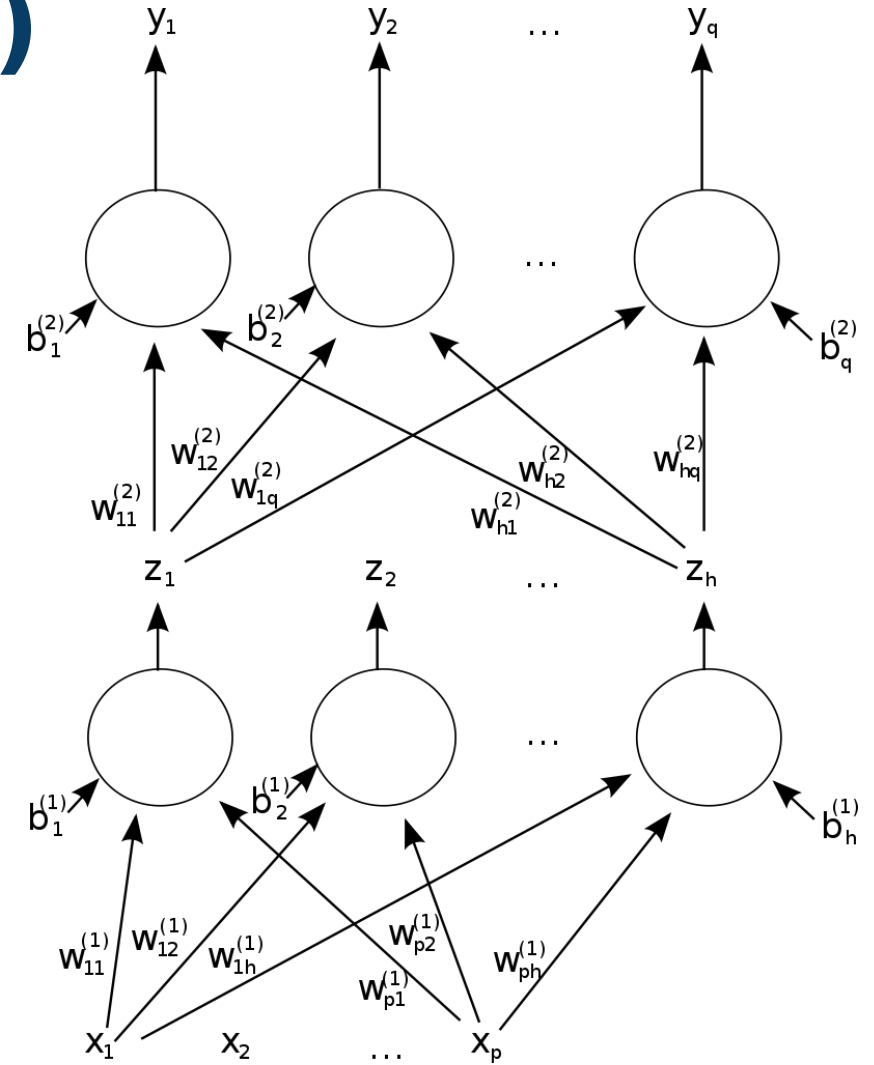
Artificial Neural Networks (ANN)



Animal neuron model



Models of animal
neurons (loosely)
inspired ANNs



Artificial neural network

Large Language Models: A Breakthrough in AI

Earlier Model Architectures

- **Flexibility:** Limited; specialized for a type of data and application
- **Uses:** Classification, regression, clustering
- **Results:** Scalars and tensors in a probability space

Large Language Models: A Breakthrough in AI

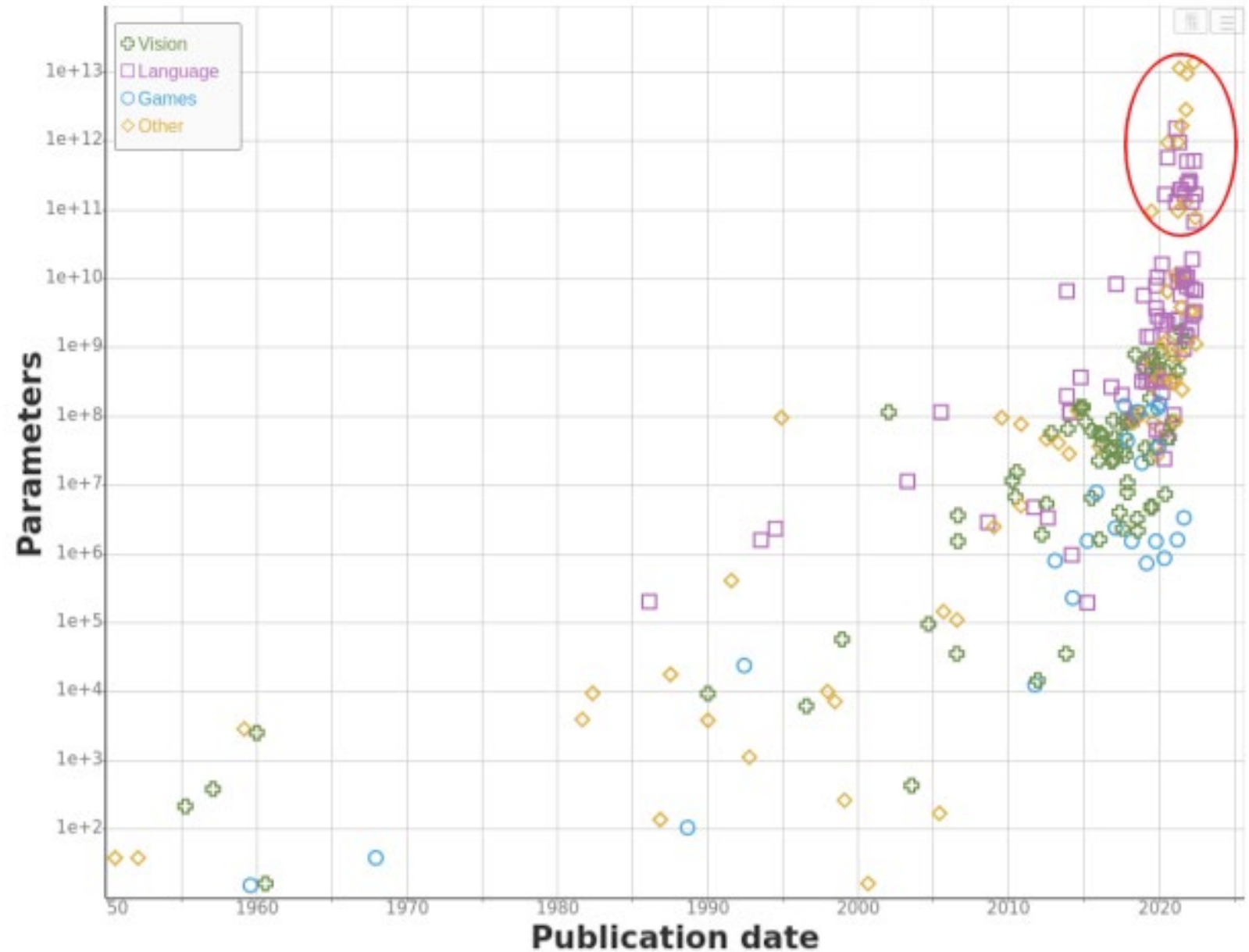
Earlier Model Architectures

- **Flexibility:** Limited; specialized for a type of data and application
- **Uses:** Classification, regression, clustering
- **Results:** Scalars and tensors in a probability space

LLM Architectures

- **Flexibility:** General-purpose; able to understand information and apply reasoning to a wide range of tasks
- **Uses:** Generation of text, images, music, videos, and other media
- **Results:** Media directly consumable by humans, e.g., plain-language text

Exponential Growth In ANN Model Sizes



Source: P. Villalobos *et al.*, "Machine Learning Model Sizes and the Parameter Gap," arXiv: 2207.02852

Digital Transformation Playbook

Vision

- Clear picture of success
- Aligned with the mission
- Ends, not means – not overly technology centric

Digital Transformation Playbook

Vision

- Clear picture of success
- Aligned with the mission
- Ends, not means – not overly technology centric

Change Management

- Proven strategy for change management
- Don't reinvent the wheel
- Risk-based approach

Digital Transformation Playbook

Vision

- Clear picture of success
- Aligned with the mission
- Ends, not means – not overly technology centric

Change Management

- Proven strategy for change management
- Don't reinvent the wheel
- Risk-based approach

Infrastructure

- Appropriate IT investments to support AI
- Data lakes to centralize enterprise data storage
- Investing in “human capital” – human knowledge is the hidden infrastructure

AI at Scale

- AI is used to transform operations and decision-making across the org.
- Driven by organizational leadership
- Supports the mission, crosses functional units
- People + Process + Technology = Transformation Enablers

AI Will Mostly Complement, Not Replace

Goldman
Sachs

Global Economics Analyst
The Potentially Large Effects of Artificial Intelligence on Economic Growth
(Briggs/Kodnani)

But there are likely exceptions in:

- Legal-related occupations
- Administrative work
- Software development and testing

Source:

Left image: J. Briggs, D. Kodani *et al.*, Goldman Sachs, "The Potentially Large Effects of Artificial Intelligence on Economic Growth"

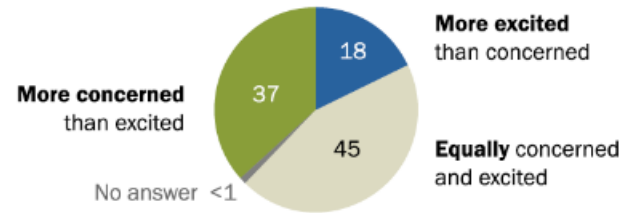
Right image: Generated by Bing Image Creator (DALL-E)



Building Public Trust in AI: An Uphill Road

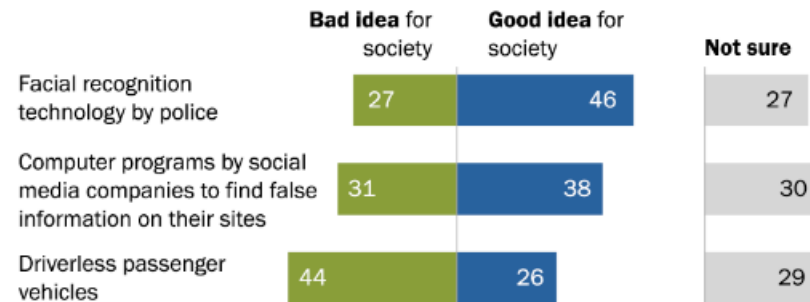
Americans lean toward concern over excitement when it comes to the increased use of AI in daily life ...

% of U.S. adults who say that overall, the increased use of artificial intelligence computer programs in daily life makes them feel ...



And public views are varied when it comes to three specific AI applications

% of U.S. adults who think widespread use of each of the following has been/would be a ...



Note: Respondents who did not give an answer are not shown. Figures may not add up to 100% due to rounding.

Source: Survey conducted Nov. 1-7, 2021.

"AI and Human Enhancement: Americans' Openness Is Tempered by a Range of Concerns"

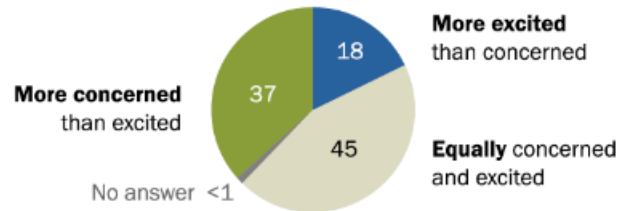
PEW RESEARCH CENTER

Source: L. Rainie et al., "AI and Human Enhancement: Americans' Openness Is Tempered by a Range of Concerns," Pew Research Center, March 17, 2022, <https://www.pewresearch.org/internet/2022/03/17/ai-and-human-enhancement-americans-openness-is-tempered-by-a-range-of-concerns/>. Copyright 2023 Pew Research Center.

Building Public Trust in AI: An Uphill Road

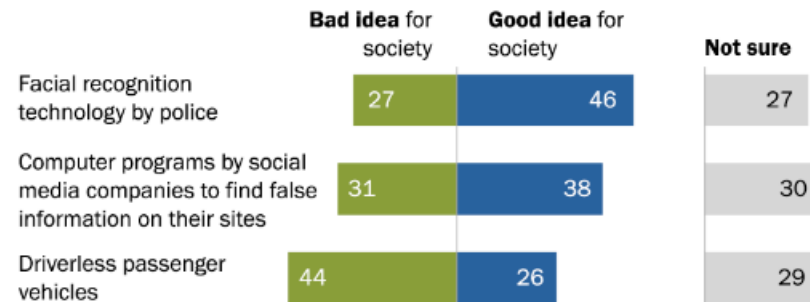
Americans lean toward concern over excitement when it comes to the increased use of AI in daily life ...

% of U.S. adults who say that overall, the increased use of artificial intelligence computer programs in daily life makes them feel ...



And public views are varied when it comes to three specific AI applications

% of U.S. adults who think widespread use of each of the following has been/would be a ...



Note: Respondents who did not give an answer are not shown. Figures may not add up to 100% due to rounding.

Source: Survey conducted Nov. 1-7, 2021.

"AI and Human Enhancement: Americans' Openness Is Tempered by a Range of Concerns"

PEW RESEARCH CENTER

Americans explain in their own words what makes them either more concerned or more excited about the increased presence of AI in daily life

% of U.S. adults who say that overall, the increased use of artificial intelligence computer programs in daily life makes them feel ...



Among those who say they are more excited than concerned, % who mention each of the following when asked what the main reason is for their view

- 31 Makes life, society better
- 13 Saves time, more efficient
- 10 Inevitable progress, is the future
- 7 Handles mundane, tedious tasks
- 6 Helps with work/labor
- 6 AI is interesting, exciting
- 6 Helps humans with difficult/dangerous tasks
- 4 More accurate than humans
- 4 Helps those who are elderly/have a disability
- 2 Personal anecdotes
- 2 Other people's fears based on sci-fi, not reality
- 7 Other

Among those who say they are more concerned than excited, % who mention each of the following when asked what the main reason is for their view

- 19 Loss of human jobs
- 16 Surveillance, hacking, digital privacy
- 12 Lack of human connection, qualities
- 8 AI will get too powerful, outsmarting people
- 8 People misusing AI
- 7 People becoming too reliant on AI/tech
- 6 AI fails, makes mistakes
- 3 Concerns about govt./tech companies using AI
- 3 Don't trust AI or people wielding it
- 2 Unforeseen consequences/effects
- 2 Loss of freedom
- 2 Human bias coded into AI
- 2 Lack of oversight and regulation
- 7 Other

Note: Open-ended responses have been coded into categories. The 22% who received but did not give an answer for the more excited than concerned question and the 20% who received but did not give an answer for the more concerned than excited question are not shown.

Including these groups, figures for each question may add up to more than 100% because multiple responses were allowed.

Source: Survey conducted Nov. 1-7, 2021.

"AI and Human Enhancement: Americans' Openness Is Tempered by a Range of Concerns"

PEW RESEARCH CENTER

AI Risk: Lack of Transparency

Would you want to apply for a job that uses AI to help make hiring decisions?

% of U.S. adults who say they would or would not want to apply for a job with an employer that uses artificial intelligence to help in hiring decisions

66% say No

32% say Yes

IN OPEN-ENDED RESPONSES TO THIS QUESTION,
PEOPLE SHARED WHY THEY SAID “YES” OR “NO”

WHY NO?

AI lacks the human touch

“It would lack/overlook the human factor. What if I don’t have the ‘right’ keywords on my application? Would I be dismissed outright? I would need to learn more about AI to feel comfortable with it.”

— WOMAN, 40s

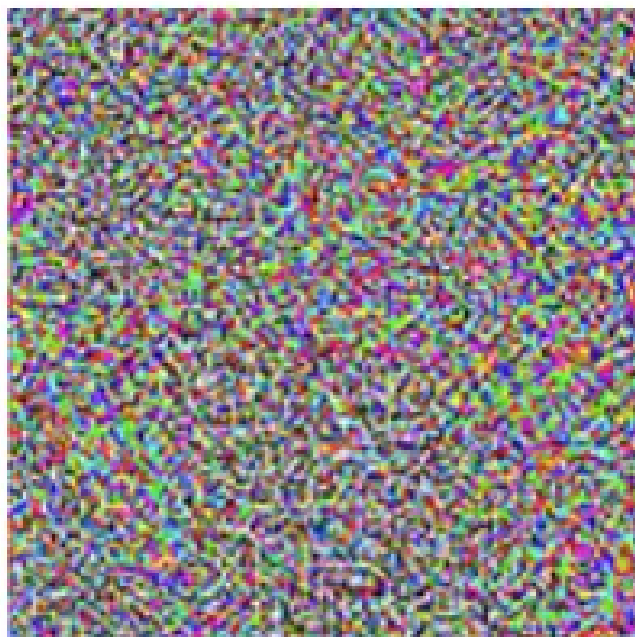
AI Vulnerability: Adversarial Example



“panda”

57.7% confidence

+ ϵ



=



“gibbon”

99.3% confidence

Questions & Answers