



# COUNTYWIDE CRIMINAL JUSTICE COORDINATION COMMITTEE



March 4, 2013

TO: Supervisor Mark Ridley-Thomas, Chairman  
Supervisor Gloria Molina  
Supervisor Zev Yaroslavsky  
Supervisor Don Knabe  
Supervisor Michael Antonovich

FROM: Mark Delgado, Executive Director <sup>MD</sup>  
Countywide Criminal Justice Coordination Committee

SUBJECT: Public Safety Realignment Implementation Update – December 2012 to January 2013 (Related to Item S-1 of the August 30, 2011 Board Agenda)

---

On August 30, 2011, your Board directed the Countywide Criminal Justice Coordination Committee (CCJCC) to work with impacted departments and provide status reports on public safety realignment implementation in the County. This report provides information captured by departments through January 31, 2013 and complements the Probation Department's report to your Board scheduled for March 5, 2013.

## SUMMARY

- Through the end of January, 13,535 individuals were released on Postrelease Community Supervision (PCS) to Los Angeles County. As anticipated, the PCS population growth has slowed considerably. The Probation Department reports that 10,445 individuals were subject to supervision at the end of January. (page 2)
- As discussed in previous realignment reports, individuals who qualify for PCS because their Mentally Disordered Offender (MDO) status was decertified present significant supervision and treatment challenges. Your Board has taken a leadership role on this issue, and the County is sponsoring legislation to address this issue. AB 1065 (Holden) would establish that individuals who currently are or were previously designated as MDOs are subject to state parole supervision upon their release from prison. (page 3)
- To address supervision and treatment challenges for PSPs who are medically fragile, the County has developed a conceptual framework with the California Department of Corrections and Rehabilitation (CDCR) for the sharing of medical information prior to an inmate's release. To implement this model, the Department of Health Services (DHS) proposes to co-locate staff at Probation's Pre-Release Center. (pages 3-4)
- Beginning July 1, 2013, revocations for state parolees will be heard in the local Court system. PSRT's Legal Work Group is currently working with CDCR's Division of Adult Parole Operations to finalize the process for handling these matters. (pages 6-7)
- The Public Safety Realignment Team's (PSRT) Law Enforcement Subcommittee developed the Chiefs of Police Regional Support (COPRS) program. COPRS provides for the co-location of deputy probation officers at designated police agencies to serve as regional law

enforcement liaisons and to ensure coordination on supervision and enforcement efforts for the highest risk PSPs. (page 8)

- PSRT’s Law Enforcement Subcommittee is also initiating a review of compliance checks practices throughout the County to identify best practices for promoting officer safety, the efficient use of resources, and PSP accountability in a fair and even-handed manner. This review is being assisted by Biola University with support from the Second Supervisorial District. (page 8)
- The jail population continues to be heavily influenced by the realigned populations housed locally. On September 30, 2011, the inmate count was 15,463; on January 31, 2013, the count was 18,864. The realigned population accounted for 32% of the population: 5,743 offenders sentenced per Penal Code 1170 (h) and 408 parole violators. (pages 8-10)

**POSTRELEASE COMMUNITY SUPERVISION (PCS)**

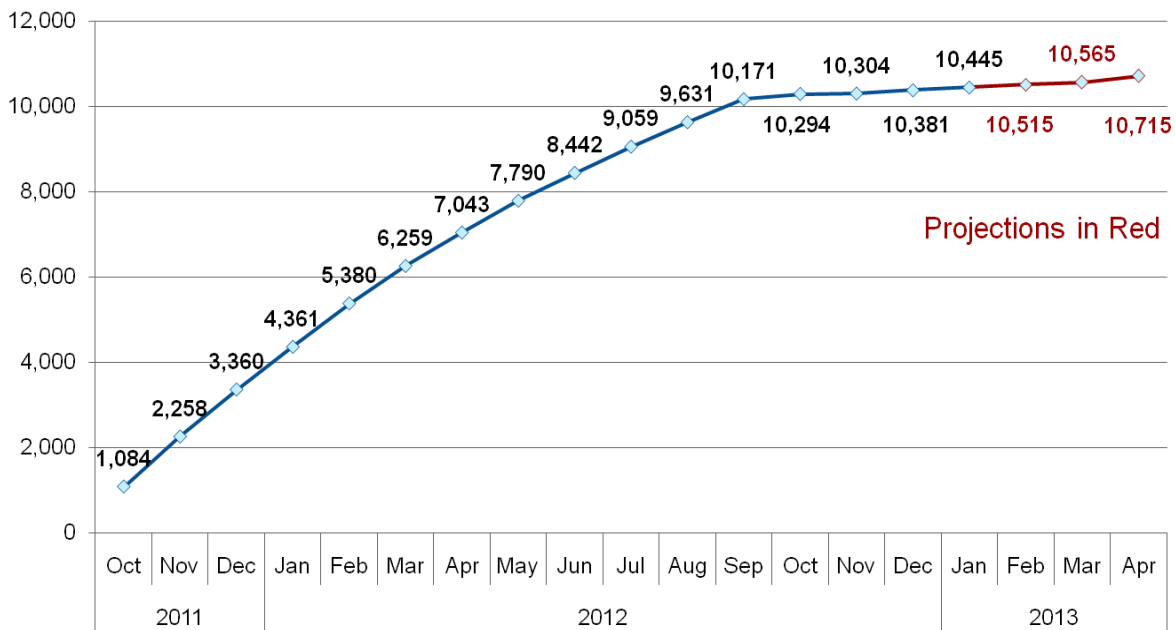
**Participant Numbers and Projections**

According to the CDCR Law Enforcement Automated Data System (LEADS), 13,535 PSPs were released to the County on PCS between October 1, 2011 and January 31, 2013.

As anticipated, the PSP population growth has slowed considerably in year two, as the number of prison releases to PCS decreases and the number of supervision terminations increases. By law, PSPs who complete 12 consecutive months of supervision with no violations resulting in custody time are to be discharged from supervision within 30 days. Of the 4,577 PSPs released between October 2011 and January 2012, 1,481 (32%) qualified for such a discharge.

In addition, some PSPs are terminated from supervision for other reasons, such as having been convicted of a new crime and sentenced to prison. Chart 1 illustrates the PCS population growth trend.

**Chart 1 – Population Subject to PCS Supervision**



### **Hub Intake/Assessment**

In December and January, 524 and 547 PSPs reported to the hubs, respectively, for intake and assessment.

As previously reported to your Board, Probation has begun to supervise PSPs at newly established risk levels (very high, high, and medium). The PCS population has now assessed at the following risk levels: 3% very high, 55% high, 40% medium, and 2% low.

Departments highlight the following with respect to the hub intake processes:

- Co-located Department of Mental Health (DMH) staff at the hubs assessed 3,558 PSPs (30% of the reporting population) by the end of January 2013.
- From October 2011 to January 2013, the Department of Public and Social Services (DPSS) screened 8,195 PSPs for benefits eligibility at the hubs. The department ultimately enrolled 9,147 in benefits programs, including individuals who were screened at the hubs and “walk-ins” to area offices. Enrollment data is significantly higher than previously reported, as the department’s capture and reporting of walk-in enrollments began in December 2012.
- In July 2012, DPSS eligibility workers were cross trained and designated to facilitate enrollment applications for qualified PSPs in Healthy Way L.A. (HWLA), the County’s Low Income Health Plan. DPSS also began the actual filing of applications in December 2012.

Since the inception of this program, 145 identified PSPs have been enrolled in HWLA, 106 of them having been enrolled in January. It is expected that enrollments will continue to increase, as processes have been refined and technical issues addressed.

- The Department of Public Health – Substance Abuse Prevention and Control (DPH-SAPC) co-located staff from the Community Assessment and Service Centers (CASCs) at the Day Reporting Center (South Los Angeles) and Lynwood hubs to conduct substance abuse assessments. This co-location was instituted to address concerns that PSPs referred for assessments were showing at a low rate to existing CASC locations. Co-location at the remaining hubs is pending.

### **Mentally Disordered Offenders (MDOs) and Medically Fragile PSPs**

***MDOs*** – As discussed in previous realignment reports, individuals who qualify for PCS because their MDO status was decertified present significant supervision and treatment challenges. Your Board’s leadership on this issue is reflected by the County’s sponsorship of legislation to address the MDO issue. AB 1065 (Holden) would establish that individuals who are currently or were previously designated as MDOs are subject to state parole supervision upon their release from prison.

***Medically Fragile PSPs*** – As also discussed in previous reports to your Board, PSPs who are medically fragile, in need of skilled nursing facility placement, or otherwise requiring medical care for chronic or active medical conditions present significant supervision and care challenges. Such cases are highly resource intensive and often come to the County’s attention after or just prior to an inmate’s release.

PSRT convened an ad hoc work group to address this matter with CDCR and discuss potential remedies. In response, CDCR leadership has developed with DHS management a framework for the

transmittal of medical information to County health care providers on inmates pending release who have chronic or active medical conditions. Such information sharing presents numerous potential benefits, including: reduced pressure on County emergency room and other acute care resources; pre-planned and better coordinated medical care to PSPs with significant medical needs; and improved supervision outcomes.

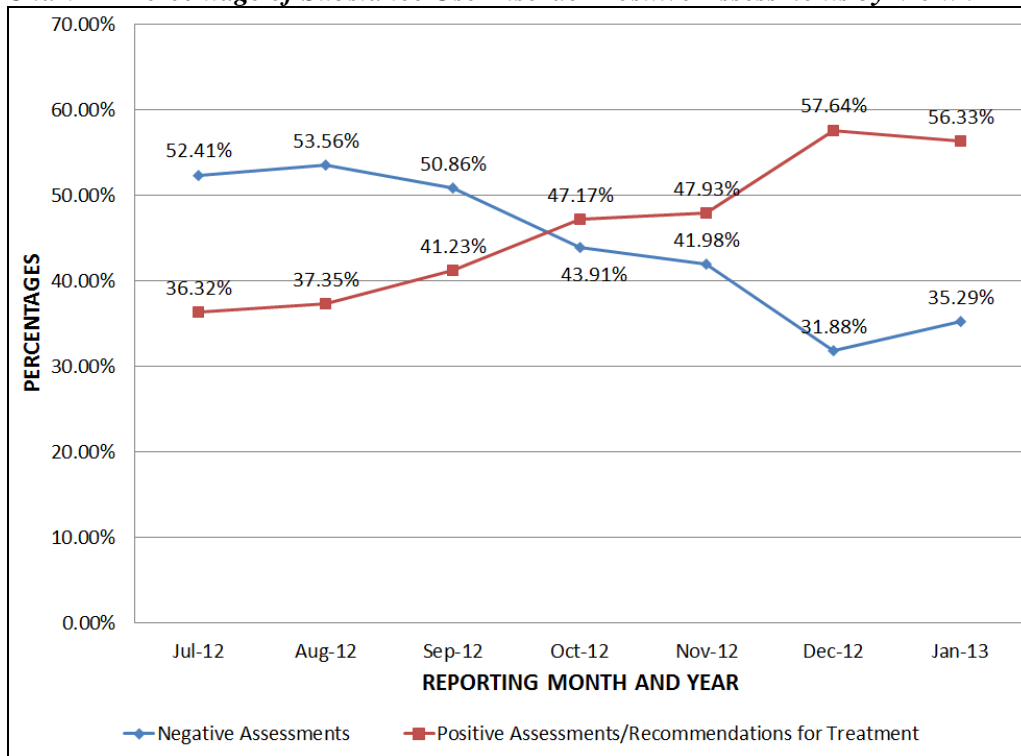
DHS proposes to co-locate staff at the County’s Pre-Release Center – similar to DMH’s co-location model – to initiate this process. DHS is working with the Chief Executive Office on an AB109 funding request for staffing resources to enact this co-location proposal.

**Provision of Treatment Services to Individuals**

The following are updates on the status of operational recommendations that have been made to address PSP treatment engagement and retention challenges:

- **CASC co-location** – CASC staff have co-located at the Day Reporting Center (South Los Angeles) and Lynwood hubs to conduct substance abuse assessments on site. CASCs have also begun conducting assessments for PSPs with substance use disorders at the PCS revocation court. These operational changes and commitments were made to reduce the frequency of missed assessments.
- **Substance Use Disorder (SUD) assessment practices** – Previous reports discussed a concern that the use of computerized self assessments was under-identifying substance abuse treatment needs among reporting PSPs. To address this concern, DPH-SAPC implemented a system of dual track assessments in October 2012, where CASC staff could utilize the self assessment program or conduct full-interview assessments of PSPs. Chart 2 illustrates that this change has resulted in an increasing number of recommendations for treatment.

**Chart 2 – Percentage of Substance Use Disorder Positive Assessments by Month**



- **Establishment of treatment violation hotline** – In January, Probation implemented a treatment violation “hotline,” through which DMH, DPH-SAPC, DPSS, or HealthRight 360 staff notify the department of treatment non-compliance or potential violation activity. The system, which includes both a designated phone number and email address, is monitored by Probation staff 24 hours a day to ensure prompt response to non-compliance.
- **Implementation of Probation’s sanction matrix** – Probation formally implemented the department’s sanctions matrix in November 2012. The sanctions matrix adds consistency to the imposition of sanctions to promote PSP accountability and treatment engagement, correct non-compliant behavior, and serve public safety.

Impacted departments have identified several other operational areas that remain in need of review/resolution. These include:

- **Eliminating wait lists for services** – Wait lists for substance abuse treatment services have been reported in Service Planning Areas (SPAs) 2, 6, 7, and 8. In November, DPH-SAPC added AB109 treatment locations in SPAs 4, 6, and 8, but the elimination of wait lists throughout the County remains a goal. To that end, DPH-SAPC is in the process of adding more treatment locations.
- **Coordination of services following new convictions** – Potential dual supervision cases occur when PSPs are convicted of a new crime and are placed on probation and/or are eligible for a drug treatment program. The establishment of PSP drug court enrollment protocols and improved coordination of treatment and supervision in such cases is needed.
- **PCS discharge planning** – As more PSPs qualify for mandatory discharge, it is necessary to improve and formalize discharge planning processes to ensure continuity of services, as appropriate, post-AB109 supervision. It is also important that discharge information be provided as soon as possible to all treatment providers so that transition to non-AB109 treatment options can be explored.
- **In-custody treatment programming** – In-custody treatment for County jail inmates is a key component for promoting successful reentry. Efforts to implement and enhance this model should continue.
- **Treatment services for sex offenders** – The placement of PSPs with a history of sexual offenses in mental health and SUD treatment presents significant challenges. Further work is needed to address this issue.
- **Identification of PSPs in non-AB109 treatment settings** – The hub process was established to coordinate intake and assessment and to serve as the primary funnel into treatment services, but departments are increasingly seeing PSPs entering treatment through other avenues. It is important to track such entries into the system better so that the necessary operational and/or budgetary adjustments can be made.

The Public Safety Realignment Team will continue to address these issues and report back to your Board on progress. In addition, PSRT continues to receive input from community stakeholders through a variety of means, including at PSRT monthly meetings and at other community events and forums where department staff participate. Impacted departments and the PSRT will continue to review such feedback to identify actionable items the committee believes should be recommended to your Board.

**Intermediate Sanctions and Revocations**

*Intermediate Sanctions*

In April 2012, Probation implemented a process to track the use of intermediate sanctions. Data in Table 1 only reflect actions taken in response to violation activity. For example, PSPs placed on electronic monitoring (EM) as an initial condition of supervision would not be reflected in the GPS/EM totals.

***Table 1 – Intermediate Sanctions Imposed by Probation***

	Year 1*	Year 2					TOTAL
	Total	OCT	NOV	DEC	JAN	Total	
No. of verbal warnings	1703	251	341	325	189	<b>1,106</b>	2,809
Increase reporting (to DPO) requirements	131	20	21	20	23	<b>84</b>	215
Additional conditions of supervision	84	7	6	7	7	<b>27</b>	111
PAAWS (Cal Trans)	100	13	19	10	4	<b>46</b>	146
Referral to Treatment Program	544	60	85	65	36	<b>246</b>	790
Flash incarceration (Supervision and Warrants)	2587	543	672	708	899	<b>2,822</b>	5,409
GPS/EM	2	0	1	0	0	<b>1</b>	3

\* Year One data is through September 30, 2012. However, not all data items have been collected since the inception of the program.

*Revocations and Court Hearings*

The number of PCS revocations continues to increase significantly as more PSPs are in the community and as Probation increasingly determines in certain cases that intermediate sanctions have been inadequate at responding to continued violation activity. There were a total of 1,281 requests during the first realignment implementation year (October 2011 to September 2012). In the first four months of year two, there have been a total of 1,067 petitions for revocation, or 83% of the full year-one total.

*Parole Revocations*

Beginning July 1, 2013, revocations for individuals on state parole will also be handled through the Superior Court. While this second phase of realignment should not impact custody – parolees revoked already serve their time in county jail – this will have significant impact on the Court system. The District Attorney’s Office, Public Defender’s Office, and Alternate Public Defender’s Office will handle prosecution and defense representation duties.

PSRT’s Legal Work Group is currently working with the State’s Division of Adult Parole Operations to refine the process for handling these matters. In January 2013, the Board of Parole Hearings

handled approximately 1,000 to 1,200 revocation matters in Los Angeles County. This offers a rough monthly estimate of the number of revocations that could be processed by the Court after July 1, 2013. Finalizing the new local revocation process is a priority in the coming months.

**Supervision and Enforcement**

Probation, the Sheriff’s Department, and the District Attorney’s Office continue to track data on warrants, arrests, prosecutions, and other PCS enforcement efforts. Table 2 summarizes various enforcement actions taken from realignment’s October 1, 2011 start date through January 31, 2013.

**Table 2 – PCS Absconder Enforcement Efforts**

	Year 1*	Year 2					TOTAL
	Total	OCT	NOV	DEC	JAN	Total	
Absconder warrants requested	2,776	155	385	562	516	1,618	4,394
Absconder warrants issued	3,181	533	385	392	614	1,924	5,105
Absconders apprehended	1,755	334	314	270	394	1,312	3,067
Active warrants remaining (month end)	1,426	1,625	1,696	1,802	2,022		

\*Year 1 data is from October 1, 2011 to September 30, 2012.

The Sheriff’s Department also tracks arrests of PSPs countywide. Table 3 provides arrest and booking data through January 2013 and new case data captured by the D.A.

**Table 3 – Countywide Arrests of PSPs and New Cases**

	Year 1	Year 2				TOTAL
	Total	OCT	NOV	DEC	JAN	
Bookings for new offenses/warrants	5,647	745	566	510	592	8,060
Bookings for prior matters	858	37	40	28	31	994
Bookings for flash incarceration <sup>†</sup>	518	125	203	211	222	1,279
Total Bookings	7,023	907	809	749	845	10,333
New cases presented to the D.A. for filing	3,288	509	462	489	585	5,333

<sup>†</sup> This row provides the number of flash incarcerations imposed by supervision deputies as a sanction. Flash incarcerations that resulted following apprehension on a warrant are included in new offense data.

As Table 3 indicates, 994 of the recorded arrests were not actually for new offenses, but for direct transports to County jail from CDCR in advance of a court appearance on a prior matter, such as warrants or previous charges. Another 1,279 bookings resulted from flash incarceration, leaving 8,060 bookings for new offenses and warrants through the end of January.

Table 3 provides an aggregate count of all bookings of PSPs, even if they have now been terminated from PCS. This differs from the arrest data presented by Probation in the departmental report to the Board, which tallies the number of times individuals who are *still* on PCS have been arrested. Probation's tally does not include arrests of individuals whose cases have already been closed.

#### *Chiefs of Police Regional Support (COPRS)*

PSRT's Law Enforcement Subcommittee developed COPRS to enhance coordination between Probation and law enforcement agencies in the County on PCS supervision and enforcement efforts. COPRS provides for the co-location of deputy probation officers at designated police agencies to serve as regional law enforcement liaisons. Officers will be assigned to the Glendale, Long Beach, Montebello, Pasadena, Pomona, Southgate, and Torrance police departments and serve as liaisons in regions developed by the County Police Chiefs Association. COPRS DPOs will maintain a supervision caseload of PSPs assessed as very-high risk.

COPRS adds to Probation's already existing co-location with law enforcement on AB109. The Los Angeles Sheriff Department's Parole Compliance Team and Los Angeles Police Department each have five DPOs assigned to assist with AB109 operations.

#### *Compliance Checks*

Compliance checks can be an important component of supervision efforts to promote PSP accountability and public safety. How compliance checks are conducted throughout the County, however, varies by jurisdiction.

PSRT's Law Enforcement Subcommittee is initiating a review of compliance checks practices throughout the County to identify best practices for promoting officer safety, the efficient use of resources, and PSP accountability in a fair and even-handed manner. This review is being assisted by Biola University with support from the Second Supervisorial District.

## **CUSTODY**

### **Sentences per Penal Code 1170 (h)**

Penal Code 1170 (h) specifies that certain non-violent, non-serious, non-sexual felony offenders (N3) are no longer eligible for state prison sentences. Chart 3 provides data on the number of PC 1170 (h) sentences given and the number of defendants who received those sentences.

Agencies highlight the following facts related to PC 1170 (h) sentences:

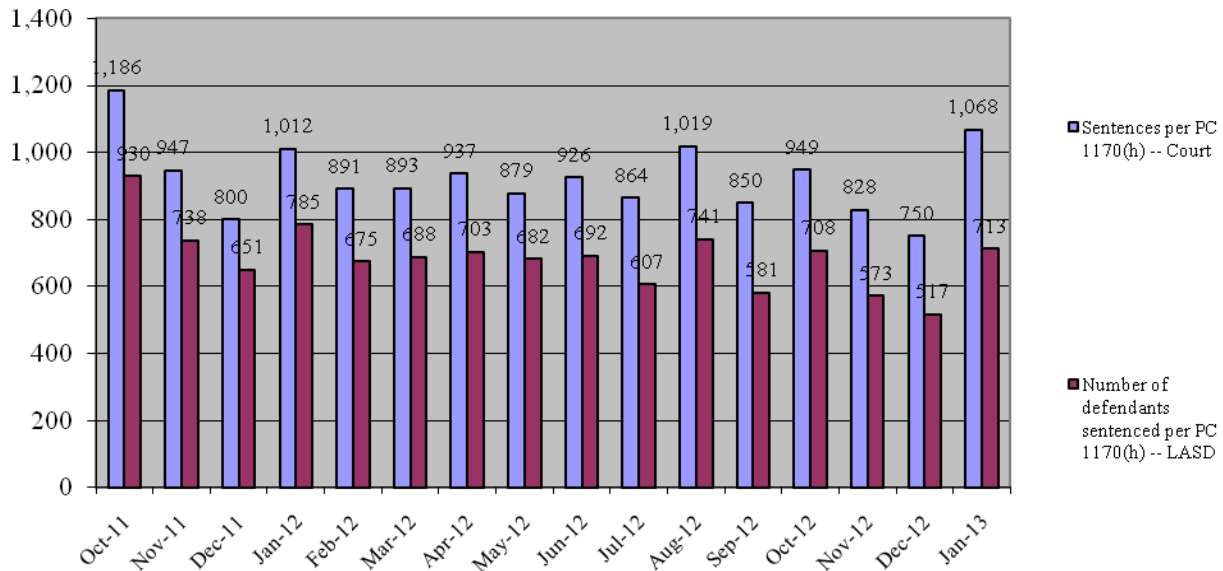
- The Superior Court reports that 630 "split sentences" were given per PC 1170 (h) through the end of January. This represents 4% of all PC 1170 (h) sentences, among the lower rates in the state. Upon an inmate's release from jail, community supervision on split sentences is conducted by the Probation's AB 109 staff.



- The Sheriff’s Department reports that as of the end of January, 5,081 N3s had been released from jail after having served their full custody term.

The number of inmates being released each month following completion of their sentence has increased significantly in year two, consistent with earlier projections. From October 2012 to January 2013, an average of 580 individuals sentenced per 1170 (h) were released each month following sentence completion.

**Chart 3 – PC 1170 (h) Sentence Data**



**Parole and PCS Community Supervision Violations**

There were 408 sentenced parole violators in custody on January 31, 2013. As indicated in Attachment III, the number of sentenced parole violators in the jail has dropped significantly in recent months as the number of individuals on state supervised parole has decreased.

In contrast, the number of individuals in jail for PCS violations has significantly increased as the PCS population has grown. In year one (October 2011 to September 2012) 2,587 flash incarcerations were issued on PSPs by Probation. From October 2012 to January 2013, 2,822 have been issued.

Similarly, PCS revocations resulting in custody time have significantly increased from 257 cases in year one to 442 cases in the first four months of year two.

**Summary of Custody Impact**

On August 31, 2011 – a month prior to realignment’s implementation – the jail population count was 15,598. By the end of January 2013, the total population had increased to 18,864 and included 5,743 individuals sentenced per PC 1170 (h). Attachment III provides more detailed information on the population growth and shifts since realignment.

**Chart 4 – Jail Population Breakdown (Final Day of the Month)**

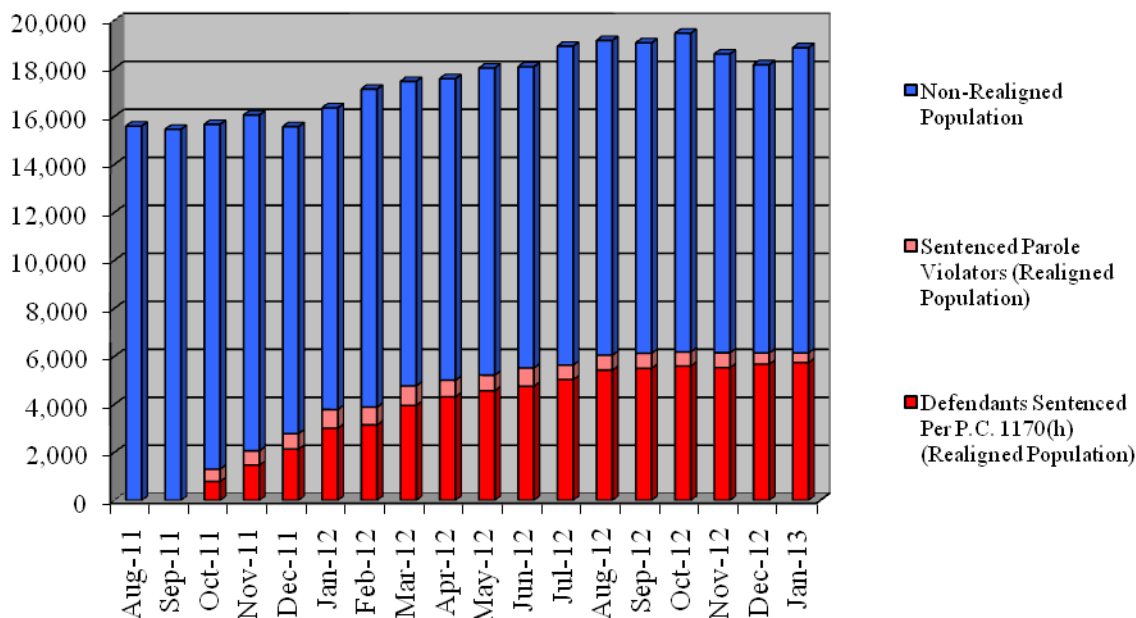


Chart 4 shows the seeming leveling off of the population in recent months. This trend coincides with the significant increase in the number of 1170 (h)-sentenced individuals reaching their custody release date. It should be noted, however, that the jail population only continues to be maintained at this level through early release practices for the non-realigned population.

Finally, while the population count is the primary measure of impact on the jail, it is not the only impact to monitor. Inmates with long-term sentences present additional demands on county jails, particularly when health and mental health resources needed are considered.

As reported in the November 2012 realignment report, approximately 98% of the 1170 (h) sentences have been for five years or less (two and ½ years or less to serve after credits are applied). The remaining 2% of sentences, however, have been for terms between five and 43 years. County jails are not designed for such long-term inmates, and it is recommended the County advocate for legislative change to refine which sentences are eligible for state prison.

**Attachments**

- c: Chief Executive Officer
- Executive Officer of the Board of Supervisors
- County Counsel
- Public Safety Realignment Team
- CCJCC Members
- Civil Grand Jury

**Public Safety Realignment  
Summary of Implementation Data**

OCT 2011 NOV 2011 DEC 2011 JAN 2012 FEB 2012 MAR 2012 APR 2012 MAY 2012 JUN 2012 JUL 2012 AUG 2012 SEP 2012 Year 1 TOTAL OCT 2012 NOV 2012 DEC 2012 JAN 2013 Year 2 TOTAL Years 1 and 2 TOTAL

**Postrelease Community Supervision**

*Pre-Release Packets*

1	No. pre-release packets received	4,076	1,394	1,069	974	1,053	1,107	917	783	722	661	783	563	<b>14,102</b>	613	428	663	427	<b>2,131</b>	<b>16,233</b>
2	No. pre-release packets processed	1,421	1,124	1,643	1,803	1,700	1,727	1,120	835	719	664	756	571	<b>14,083</b>	538	455	591	395	<b>1,979</b>	<b>16,062</b>
3	No. pre-release packets deemed ineligible (of those processed)	114	41	77	89	73	65	43	39	20	27	36	25	<b>649</b>	28	19	20	23	<b>90</b>	<b>739</b>
4	No. PSPs with Special Handling Requirements	10	21	19	14	12	13	8	14	8	11	8	10	<b>148</b>	12	6	7	6	<b>31</b>	<b>179</b>
5	No. of PSPs who are registered sex offenders	20	21	13	22	18	17	24	33	25	14	17	16	<b>240</b>	9	12	19	17	<b>57</b>	<b>297</b>
6	No. address verifications conducted	207	64	10	8	243	438	216	107	164	169	164	112	<b>1,902</b>	149	108	116	171	<b>544</b>	<b>2,446</b>
7	No. homeless/transient PSPs per CDCR	148	168	153	137	139	111	122	126	89	105	104	82	<b>1,484</b>	90	69	132	139	<b>430</b>	<b>1,914</b>

*PSP Reporting Population*

8	No. PSPs released to County per pre-release packet dates	1,036	1,269	1,152	1,133	1,121	1,008	955	856	674	834	776	686	<b>11,500</b>	578	534	566	533	<b>2,211</b>	<b>13,711</b>
9	No. PSPs directly released to County per CDCR LEADS	1,061	1,218	1,179	1,119	1,051	999	902	842	725	776	703	659	<b>11,234</b>	642	562	562	535	<b>2,301</b>	<b>13,535</b>
10	No. PSPs released to Federal custody with ICE detainee	81	86	70	63	64	62	71	56	51	65	54	47	<b>770</b>	33	34	49	40	<b>156</b>	<b>926</b>
11	No. of PSPs released to the community by ICE							2	0	0	1	3	2	<b>8</b>	3	0	2	1	<b>6</b>	<b>14</b>
12	No. PSPs released to other jurisdiction custody	15	42	29	43	57	71	35	58	30	0	42	28	<b>450</b>	29	25	28	28	<b>110</b>	<b>560</b>
13	No. PSPs transferred to L.A. County from other counties	5	6	12	25	45	84	66	77	72	53	33	35	<b>513</b>	38	34	23	39	<b>134</b>	<b>647</b>
14	No. PSPs transferred from L.A. County to other jurisdictions	9	7	18	36	66	76	80	52	58	71	77	67	<b>617</b>	60	42	19	48	<b>169</b>	<b>786</b>
15	No. PSPs processed at hubs (intake/assessment)	756	969	951	970	900	897	780	797	704	762	674	601	<b>9,761</b>	629	549	524	547	<b>2,249</b>	<b>12,010</b>
16	Male	656	853	826	834	792	784	667	716	624	676	617	555	<b>8,600</b>	585	501	478	492	<b>2,056</b>	<b>10,656</b>
17	Female	100	116	125	136	108	113	113	81	80	86	57	46	<b>1,161</b>	44	48	46	55	<b>193</b>	<b>1,354</b>
18	No. PSPs by risk tier, as assessed at hubs:																			
19	Low Risk	27	21	24	15	12	12	7	8	8	9	5	14	<b>162</b>	7	5	6	10	<b>28</b>	<b>190</b>
20	Male	24	19	22	15	10	10	6	8	8	7	5	12	<b>146</b>	7	4	5	9	<b>25</b>	<b>171</b>
21	Female	3	2	2	0	2	2	1	0	0	2	0	2	<b>16</b>	0	1	1	1	<b>3</b>	<b>19</b>
22	Medium Risk	344	373	378	389	399	366	317	305	331	275	244	244	<b>3,965</b>	261	205	175	169	<b>810</b>	<b>4,775</b>
23	Male	306	327	336	331	353	325	272	268	289	241	218	218	<b>3,484</b>	244	184	158	150	<b>736</b>	<b>4,220</b>
24	Female	38	46	42	58	46	41	45	37	42	34	26	26	<b>481</b>	17	21	17	19	<b>74</b>	<b>555</b>
25	High Risk	351	523	513	526	459	488	437	453	354	463	406	316	<b>5,289</b>	346	311	343	347	<b>1,347</b>	<b>6,636</b>
26	Male	296	462	439	452	402	424	374	411	318	413	379	299	<b>4,669</b>	321	288	315	314	<b>1,238</b>	<b>5,907</b>
27	Female	55	61	74	74	57	64	63	42	36	50	27	17	<b>620</b>	25	23	28	33	<b>109</b>	<b>729</b>
28	Very High Risk	34	52	36	40	30	31	19	31	11	15	19	27	<b>345</b>	15	28		21	<b>64</b>	<b>409</b>
29	Male	30	45	29	36	27	25	15	29	9	15	15	26	<b>301</b>	13	25		19	<b>57</b>	<b>358</b>
30	Female	4	7	7	4	3	6	4	2	2	0	4	1	<b>44</b>	2	3		2	<b>7</b>	<b>51</b>
31	No. PSPs who are veterans		11	14	25	23	24	17	33	29	20	20	18	<b>234</b>	16	17	16	14	<b>63</b>	<b>297</b>

**Public Safety Realignment  
Summary of Implementation Data**

OCT 2011 NOV 2011 DEC 2011 JAN 2012 FEB 2012 MAR 2012 APR 2012 MAY 2012 JUN 2012 JUL 2012 AUG 2012 SEP 2012 Year 1 TOTAL OCT 2012 NOV 2012 DEC 2012 JAN 2013 Year 2 TOTAL Years 1 and 2 TOTAL

**PSP "No-Show" and Absconder Population**

32	No. "no-show" notifications to Sheriff	46	139	185	157	151	183	135	122	163	13	20	5	<b>1,319</b>	14	4	14	10	<b>42</b>	<b>1,361</b>
33	No. Sheriff and LAPD attempts to contact "no-show" PSPs	46	139	185	157	151	183	35	57	24	16	35	12	<b>1,040</b>	14	17	8	16	<b>55</b>	<b>1,095</b>
34	No. warrants requested for absconders	0	95	88	68	144	411	236	328	292	414	369	331	<b>2,776</b>	155	385	562	516	<b>1,618</b>	<b>4,394</b>
35	All warrants issued	0	34	124	83	123	278	301	318	460	567	492	401	<b>3,181</b>	533	385	392	614	<b>1,924</b>	<b>5,105</b>
36	Warrants recalled	0	22	36	59	65	111	201	214	195	246	320	286	<b>1,755</b>	334	314	270	394	<b>1,312</b>	<b>3,067</b>
37	No. of active warrants remaining*	0	12	100	124	182	349	449	553	818	1,139	1,311	1,426		1,625	1,696	1,802	2,022		

\* The number of active warrants remaining is cumulative and includes remaining warrants from previous months.

**PSP Violations/Revocations/New Charges**

38	No. of petitions for revocations (other than warrants)	0	1	3	4	41	75	127	144	156	276	256	198	<b>1,281</b>	221	393	254	199	<b>1,067</b>	<b>2,348</b>
39	Pending Revocation Hearing									56	39	67	83		33	88	92	23		
40	No. of Revocation Hearing Cases Heard	0	0	0	4	27	60	115	156	159	229	266	228	<b>1,244</b>	297	330	251	332	<b>1,210</b>	<b>2,454</b>
41	Revocation Results																			
42	Intermediate sanction									7	16	14	5	<b>42</b>	6	9	2	4	<b>21</b>	<b>63</b>
43	Custody 11 - 45 days									6	8	12	18	<b>44</b>	12	10	12	9	<b>43</b>	<b>87</b>
44	Custody 46 - 90 days									19	31	18	21	<b>89</b>	32	46	35	38	<b>151</b>	<b>240</b>
45	Custody 91 - 180 days									7	41	35	41	<b>124</b>	63	57	45	83	<b>248</b>	<b>372</b>
46	Other (Continuances, Bench Warrants, etc.)									120	133	187	143	<b>583</b>	184	208	157	198	<b>747</b>	<b>1,330</b>
47	No. of PSP arrests / bookings	80	165	277	396	485	588	688	769	798	927	971	879	<b>7,023</b>	907	809	749	845	<b>3,310</b>	<b>10,333</b>
48	No. arrests/bookings for prior matters	47	70	75	75	75	75	173	62	61	57	58	30	<b>858</b>	37	40	28	31	<b>136</b>	<b>994</b>
49	No. arrests/bookings for new offenses	33	95	202	321	404	477	459	634	667	789	797	769	<b>5,647</b>	745	566	510	592	<b>2,413</b>	<b>8,060</b>
50	No. bookings for flash incarceration (AB 109 Supervision Only)					6	36	56	73	70	81	116	80	<b>518</b>	125	203	211	222	<b>761</b>	<b>1,279</b>
51	No. of cases presented to the D.A. for filing	14	40	105	182	141	276	341	393	388	496	478	434	<b>3,288</b>	509	462	489	585	<b>2,045</b>	<b>5,333</b>
52	Declined	5	7	28	45	30	57	84	92	83	115	103	81	<b>730</b>	113	106	116	136	<b>471</b>	<b>1,201</b>

**Sanctions**

53	No. of verbal warnings					8	91	187	306	293	261	327	230	<b>1,703</b>	251	341	325	189	<b>1,106</b>	<b>2,809</b>
54	Increase reporting (to DPO) requirements					1	11	25	21	19	14	25	15	<b>131</b>	20	21	20	23	<b>84</b>	<b>215</b>
55	Additional conditions of supervision				1	6	3	10	12	14	13	19	6	<b>84</b>	7	6	7	7	<b>27</b>	<b>111</b>
56	PAAWS (Cal Trans)					7	15	7	18	15	9	17	12	<b>100</b>	13	19	10	4	<b>46</b>	<b>146</b>
57	Referral to Treatment Program					9	20	81	86	103	63	116	66	<b>544</b>	60	85	65	36	<b>246</b>	<b>790</b>
58	Flash incarceration (Supervision and Warrants)	1	24	36	46	81	146	236	287	331	429	507	463	<b>2,587</b>	543	672	708	899	<b>2,822</b>	<b>5,409</b>
59	GPS/EM					0	0	0	0	0	0	2	0	<b>2</b>	0	1	0	0	<b>1</b>	<b>3</b>

**Public Safety Realignment  
Summary of Implementation Data**

OCT 2011 NOV 2011 DEC 2011 JAN 2012 FEB 2012 MAR 2012 APR 2012 MAY 2012 JUN 2012 JUL 2012 AUG 2012 SEP 2012 Year 1 TOTAL OCT 2012 NOV 2012 DEC 2012 JAN 2013 Year 2 TOTAL Years 1 and 2 TOTAL

**Mental Health Treatment Services**

60	No. of pre-release packets forwarded to DMH for review at PRC	238	236	253	344	284	326	170	197	147	144	160	135	<b>2,634</b>	84	125	125	110	<b>444</b>	<b>3,078</b>
61	No. of mental health treatment conditions added by Probation***	891	281	221	168	208	247	195	142	161	141	174	137	<b>2,966</b>	125	109	124	103	<b>461</b>	<b>3,427</b>
62	No. DMH determinations -- treatment needed***	387	434	423	399	394	351	327	296	258	251	214	222	<b>3,956</b>	209	173	106	119	<b>607</b>	<b>4,563</b>
63	No. of PSPs refusing Mental Health Services at HUBS***	45	53	79	37	45	44	26	19	14	13	8	7	<b>390</b>	4	4	0	0	<b>8</b>	<b>398</b>

\*\*\* Data are reported according to the PSP month of release. INT II FOR ADDITIONAL MENTAL HEALTH INFORMATION

**Substance Abuse Treatment Services (Based on month of assessment)**

64	No. of referrals made to CASCs at Hub for Substance Abuse Treatment only assessment	331	402	383	367	401	491	484	507	414	450	387	326	<b>4,943</b>	322	277	242	265	<b>1,106</b>	<b>6,049</b>
65	No. of substance abuse treatment conditions added by Probation***	1,519	491	511	562	722	750	632	483	437	405	481	336	<b>7,329</b>	400	319	273	225	<b>1,217</b>	<b>8,546</b>
66	No. of narcotics testing orders added by Probation***	1,966	612	489	503	634	758	674	522	472	442	503	356	<b>7,931</b>	429	329	357	274	<b>1,389</b>	<b>9,320</b>
67	No. of PSPs showing at CASCs for assessment	9	56	200	230	275	411	342	379	346	435	506	405	<b>3,594</b>	460	555	458	561	<b>2,034</b>	<b>5,628</b>
68	<i>No. of CASC referrals to:</i>	8	33	87	84	151	209	137	165	135	158	189	167	<b>1,523</b>	217	266	264	316	<b>1,063</b>	<b>2,586</b>
69	<i>Residential Treatment Services</i>	1	5	19	19	14	24	22	36	25	34	55	50	<b>304</b>	63	73	59	68	<b>263</b>	<b>567</b>
70	<i>Outpatient Treatment Services</i>	7	28	68	65	137	185	115	129	110	124	134	117	<b>1,219</b>	154	193	205	248	<b>800</b>	<b>2,019</b>
71	<i>Sober Living</i>	0	0	0	1	0	1	4	5	0	0	0	2	<b>13</b>	0	17	20	24	<b>61</b>	<b>74</b>
72	<i>No. of PSPs entering:</i>	6	22	30	35	49	79	66	82	89	87	90	61	<b>696</b>	91	108	95	137	<b>431</b>	<b>1,127</b>
73	<i>Residential Treatment Services</i>	1	4	5	12	10	11	5	27	19	17	21	18	<b>150</b>	25	29	22	34	<b>110</b>	<b>260</b>
74	<i>Outpatient Treatment Services</i>	5	18	25	23	39	68	61	55	68	70	69	43	<b>544</b>	66	79	73	103	<b>321</b>	<b>865</b>
75	<i>Sober Living</i>	0	0	0	1	0	0	0	0	2	4	1	2	<b>10</b>	2	4	3	5	<b>14</b>	<b>24</b>

\*\*\* Data are reported according to the PSP month of release.

**Referrals for other Services (Based on month of assessment)**

76	No. PSPs screened for benefits eligibility by DPSS	646	780	707	755	388	336	389	438	422	523	555	452	<b>6,391</b>	506	448	411	439	<b>1,804</b>	<b>8,195</b>
77	No. PSPs who DPSS referred to local DPSS office	489	569	528	562	303	257	278	329	280	368	428	340	<b>4,731</b>	381	357	335	337	<b>1,410</b>	<b>6,141</b>
78	No. PSPs enrolled in:	186	229	248	245	139	78	157	140	154	160	191	143	<b>2,070</b>	86	88	3,537	3,366	<b>7,077</b>	<b>9,147</b>
79	<i>MediCal</i>	2	1	0	0	0	0	0	0	1	0	0	0	<b>4</b>	0	0	18	12	<b>30</b>	<b>34</b>
80	<i>Med/CF</i>	0	1	1	2	0	0	4	3	1	1	3	1	<b>17</b>	1	6	56	50	<b>113</b>	<b>130</b>
81	<i>General Relief</i>	3	16	11	9	4	5	16	6	8	5	5	4	<b>92</b>	1	11	386	356	<b>754</b>	<b>846</b>
82	<i>CalFresh</i>	156	160	174	173	109	60	86	106	105	117	135	106	<b>1,487</b>	69	28	1,389	1,355	<b>2,841</b>	<b>4,328</b>
83	<i>CalFresh and General Relief</i>	24	51	62	57	25	13	50	24	37	36	45	32	<b>456</b>	15	43	1,687	1,591	<b>3,336</b>	<b>3,792</b>
84	<i>CalWorks/CalFresh</i>	1	0	0	4	1	0	1	1	2	1	3	0	<b>14</b>	0	0	1	2	<b>3</b>	<b>17</b>
85	No. PSPs referred to DHS for Healthy Way L.A. screening	291	371	343	390	218	184	151	204	179	126			<b>2,457</b>					<b>0</b>	<b>2,457</b>
86	Number of completed Healthy Way L.A. applications forwarded to DHS										143	324	272	<b>739</b>	279	237			<b>516</b>	<b>1,255</b>

**Public Safety Realignment  
Summary of Implementation Data**

	OCT 2011	NOV 2011	DEC 2011	JAN 2012	FEB 2012	MAR 2012	APR 2012	MAY 2012	JUN 2012	JUL 2012	AUG 2012	SEP 2012	Year 1 TOTAL	OCT 2012	NOV 2012	DEC 2012	JAN 2013	Year 2 TOTAL	Years 1 and 2 TOTAL
87 Number of Healthy Way L.A. applications filed (from Hub)																207	243	450	

**Referrals for HealthRight 360 (Formerly Haight-Ashbury)**

88 No. of PSPs referred this month					82	260	1,296	541	639	682	629	498	4,627	561	504	450	580	2,095	6,722
89 No. of Referrals					109	353	1445	663	831	876	800	678	5,755	721	626	533	343	2,223	7,978
90 <i>Transportation</i>					11	8	15	2	24	29	44	31	164	25	20	9	0	54	218
91 <i>Sober Living</i>					4	6	15	10	18	75	70	51	249	43	41	35	23	142	391
92 <i>Sober Living With Child</i>					0	0	1	0	0	2	0	0	3	0	0	1	1	2	5
93 <i>Transitional Housing</i>					68	162	208	198	260	357	310	311	1,874	389	343	283	176	1,191	3,065
94 <i>Transitional Housing With Child</i>					1	1	1	0	2	5	5	2	17	1	1	2	0	4	21
95 <i>Shelter</i>					0	0	6	3	2	8	4	8	31	2	0	0	0	2	33
96 <i>Job Readiness</i>					25	176	1,199	450	525	400	367	275	3,417	261	221	203	143	828	4,245

**PSP Supervision Terminations**

97 No. of petitions submitted to terminate supervision					14	15	63	67	70	100	88	68	485	108	100	133	95	436	921
98 No. of terminations	1	0	2	2	7	11	61	71	60	76	104	75	470	504	531	486	469	1,990	2,460
99 <i>No. other (new criminal conviction, revocation settlement, court order, etc.)</i>	1	0	2	2	7	11	61	71	60	76	104	75	470	124	112	139	134	509	979
100 <i>No. terminations -- 6 months violation-free</i>	N/A	N/A	N/A	N/A	N/A	N/A	0	0	0	0	0	0	0	0	0	0	0	0	0
101 <i>No. terminations -- 12 months violation-free (automatic discharge)</i>	N/A	N/A	N/A	N/A	N/A	N/A	N/A	N/A	N/A	N/A	N/A	N/A	N/A	380	419	347	335	1,481	1,481
102 <i>No. terminations -- 3 year expiration (maximum)</i>	N/A	N/A	N/A	N/A	N/A	N/A	N/A	N/A	N/A	N/A	N/A	N/A	N/A	N/A	N/A	N/A	N/A	N/A	N/A

**Custody**

**Jail Population and Sentencing**

103 No. of total Court sentences pursuant to Penal Code 1170(h)	1,186	947	800	1,012	891	893	937	879	926	864	1,019	850	11,204	949	828	750	1,068	3,595	14,799
104 <i>No. sentenced to "split" sentence</i>	62	41	40	49	36	30	36	34	40	31	45	39	483	41	28	26	52	147	630
105 No. actual defendants sentenced pursuant to Penal Code 1170 (h)	930	738	651	785	675	688	703	682	692	607	741	581	8,473	708	573	517	713	2,511	10,984
106 <i>Male inmates sentenced</i>	750	606	535	650	553	561	584	557	566	516	595	463	6,936			426	577	1,003	7,939
107 <i>Female inmates sentenced</i>	180	132	116	135	122	127	119	125	126	91	146	118	1,537			91	136	227	1,764
108 No. of sentenced N3s currently in jail (at end of the month)	907	1,580	2,180	2,907	3,485	4,040	4,501	4,809	5,121	5,316	5,670	5,715		5,855	5,808	5,676	5,731		
109 No. N3s released after serving full term (month of occurrence)	23	65	51	58	97	133	242	374	380	412	387	536	2,758	567	621	535	600	2,323	5,081
110 No. Station Worker Program (at end of month)	0	70	89	118	124	127	144	141	137	130	127	121		132	136	135	130		
111 No. N3s currently on alternative custody (at end of the month)																			
113 <i>No. Work Release Program</i>	0	0	0	0	0	0	0	0	0	0	0	0		0	0	0	0		
114 <i>No. Electronic monitoring/GPS</i>	0	35	33	32	31	27	20	14	10	9	8	7		6	5	5	5		







	Oct-11	Nov-11	Dec-11	Jan-12	Feb-12	Mar-12	Apr-12	May-12	Jun-12	Jul-12	Aug-12	Sep-12	Oct-12	Nov-12	Dec-12	Jan-13
Inpatient++	0	1	1	1	0	1	1	1	0	1	0	0	1	0	0	0
IMD Step Down	2	7	4	3	1	6	3	5	1	3	2	3	2	2	4	2
Residential Treatment	0	1	1	0	2	0	0	0	2	0	0	0	0	0	0	0
Outpatient	169	191	164	200	193	165	175	152	145	145	125	133	129	105	102	117
<b>Treatment</b>																
Current Status of Clients Who Accepted Treatment	171	200	170	204	196	172	179	158	148	149	127	136	132	107	106	119
New Client/Status To Be Determined	8	5	2	5	4	5	9	8	20	11	15	6	6	19	18	18
Completed Treatment	26	32	20	29	16	13	9	6	3	6	0	2	1	0	0	0
In Treatment/Compliant with Treatment Plan	22	49	45	58	70	57	59	56	51	49	24	28	38	25	40	23
In Treatment/Not Complying With Treatment Plan	8	12	13	16	21	21	19	14	21	15	7	3	7	10	1	0
Left Treatment	11	16	21	23	19	12	8	11	4	4	2	3	1	1	0	0
Did Not Show for Treatment/Refused Treatment After Referral	58	54	39	46	32	34	52	34	26	32	11	8	7	7	6	9
In Inpatient Setting Awaiting Transfer to State Hospital/IMD	0	0	0	0	0	0	0	0	0	0	0	0	0	0	0	0
In Jail Awaiting Transfer to State Hospital/IMD	0	0	0	0	0	0	0	0	0	0	0	0	0	0	0	0
Incarcerated	19	13	12	12	12	6	7	4	8	8	2	0	3	0	1	0
Deceased+	0	2	1	0	0	0	0	0	0	0	0	0	0	0	0	0
Other (Client referred to Other County/Provider)	19	15	16	15	21	22	15	25	12	24	66	86	69	45	39	68
<b>VI Current Placement of Clients</b>																
Current Placement of Clients	171	200	170	204	196	172	179	158	148	149	127	136	132	107	106	119
Jail++	19	13	17	19	9	4	9	6	4	7	1	0	3	0	1	0
State Hospital	0	0	0	0	0	0	0	0	0	0	0	0	0	0	0	0
Institutions for Mental Disease	0	2	3	1	0	0	0	0	0	0	0	0	0	0	0	0
Inpatient++-	0	2	4	3	2	2	1	2	1	2	0	0	0	0	0	1
IMD Step Down-	2	3	2	3	0	3	0	3	1	0	1	1	0	1	0	0
Residential Treatment-	0	1	2	2	2	2	4	4	0	1	0	0	0	0	0	0
Outpatient Services	73	103	82	114	120	98	90	76	81	71	34	34	48	51	52	29
Other	76	72	59	60	59	61	73	66	61	66	90	99	79	54	49	86
<b>VII PSPs Who Have Accessed Services+++</b>																
PSPs Who Have Accessed Services+++	335	350	339	332	311	271	251	228	205	189	158	165	156	116	123	72
PSPs with At least One Inpatient Admission	9	29	27	17	15	13	11	10	4	6	2	3	3	3	4	3
PSPs with At least One Crisis Service (PMRT, UCC, PES)	31	42	41	38	22	22	17	19	23	16	8	11	4	9	9	2
PSPs with At least One Services in Jail Since Release	206	211	230	192	175	158	141	120	105	97	75	61	57	48	62	58

+ Deaths due to medical conditions

++ Some Clients placed in inpatient facilities or County Jail pending completion of conservatorship proceedings necessary for State Hospital/IMD Placement

+++ Based on IS data; data entry may lag up to three months after the month of service

## Jail Population Breakdown -- Final Day of the Month

	Pre-realignment		Post-realignment																	+/-	Change
	Aug-11	Sep-11	Oct-11	Nov-11	Dec-11	Jan-12	Feb-12	Mar-12	Apr-12	May-12	Jun-12	Jul-12	Aug-12	Sep-12	Oct-12	Nov-12	Dec-12	Jan-13			
Other (open charges, probation violations, PRCS flash, etc.)	10,908	10,560	9,950	10,113	9,412	9,400	10,163	9,660	9,746	9,658	9,840	10,502	10,221	10,014	10,322	10,023	9,678	10,049	-859	-8%	
Sentenced N3	0	0	789	1,468	2,139	3,005	3,148	3,957	4,314	4,571	4,758	5,035	5,431	5,507	5,599	5,534	5,676	5,743	5,743	-	
Sentenced Parole Violators	0	0	514	598	644	783	737	815	691	647	761	602	621	624	590	618	472	408	408	-	
Pending Parole Violators	1,101	1,321	1,312	1,014	790	747	570	456	370	381	337	352	357	306	344	299	280	292	-809	-73%	
County Sentenced	2,100	2,300	2,089	2,120	1,860	1,712	1,749	1,754	1,565	1,872	1,553	1,503	1,569	1,708	1,791	1,363	1,248	1,375	-725	-35%	
State Prison Population	1,489	1,282	1,017	747	730	710	771	818	887	883	821	934	968	908	821	765	802	997	-492	-33%	
<b>Total Physical Count (ADP)</b>	<b>15,598</b>	<b>15,463</b>	<b>15,671</b>	<b>16,060</b>	<b>15,575</b>	<b>16,357</b>	<b>17,138</b>	<b>17,460</b>	<b>17,573</b>	<b>18,012</b>	<b>18,070</b>	<b>18,928</b>	<b>19,167</b>	<b>19,067</b>	<b>19,467</b>	<b>18,602</b>	<b>18,156</b>	<b>18,864</b>	<b>3,266</b>	<b>21%</b>	