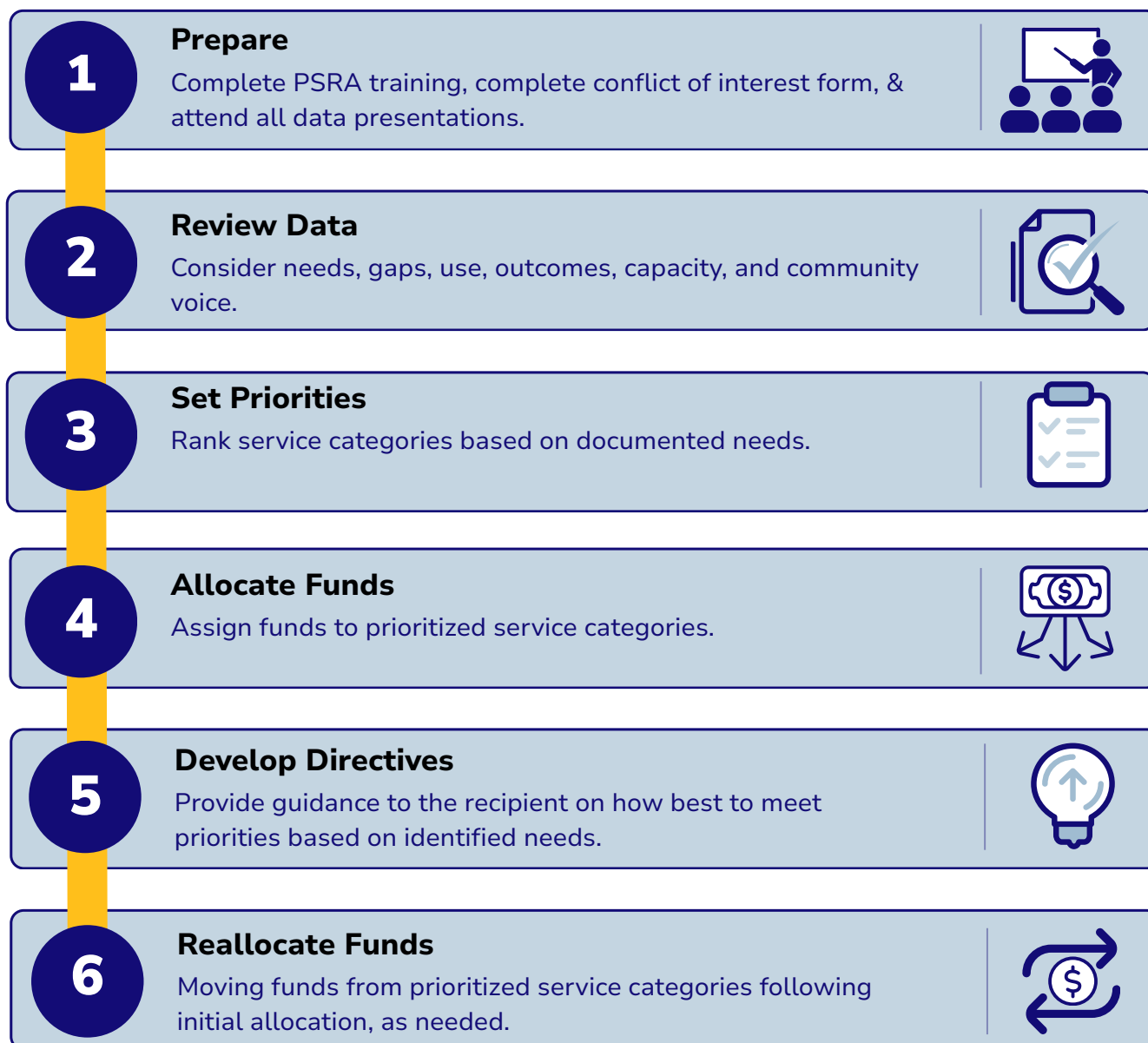


Priority Setting & Resource Allocation At A Glance

Purpose: Use data and community input to set priorities and allocate Ryan White Program Part A and MAI funds.

Source: Policy #09.5203



What guides decisions

- Needs assessment findings
- Service costs & utilization data
- Other resources
- Community input
- Other relevant data

How the process stays fair

- Community agreements for respectful discussion
- Public comment allowing for community voice
- Conflict checks including disclosure & abstention
- Roll call voting on record

Bottom line

Funding decisions stay grounded in need, equity, and community voice to create a comprehensive HIV care continuum within Los Angeles County.